

Code: VTH2421FB-P

INDOOR PANEL IP **VTH2421FB-P** DAHUA

Net: **290.81 EUR** Gross: **290.81 EUR**

The VTH2421FB-P panel has been designed to create a simple and effective system of local communication.

The device cooperates with video doorphones, and other panels working in DAHUA IP standard. It can be also used as simple alarm control panel, or notification module by the support 6 alarm inputs.

ATTENTION! The device does not support the Dahua analogue system.



SPECIFICATION

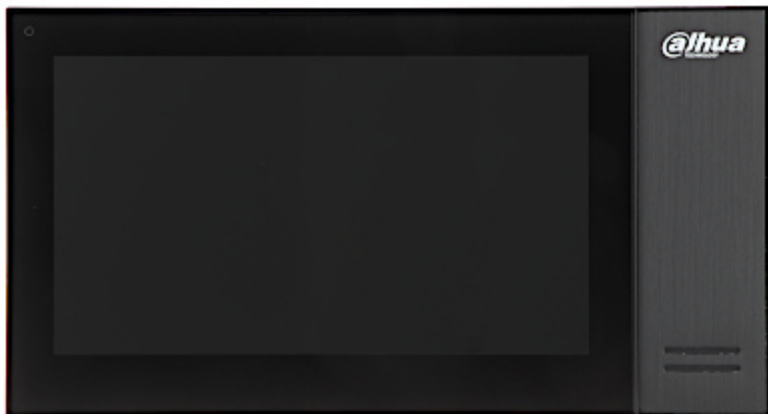
Compatibility:	Interphone installation - DAHUA
Shield:	7 " TFT-LCD color matrix
Resolution:	1024 x 600
Internal memory:	8 GB
Main features:	<ul style="list-style-type: none">• Micro SD memory cards up to 32GB support (possible local recording), included : 8 GB,• Microphone built-in,• Speakers built-in,• Bidirectional communication,• Smooth adjustment of monitor parameters: image brightness, ring tone volume and conversation volume,• The ability to automatically take and save photos if you do not answer to the bell button,• The ability to record a short video message in the absence of a response to the bell button,• IP Dahua cameras support,• Noise and echo reduction ,
Controlling:	capacitive touch screen
Alarm inputs:	6
Alarm outputs:	1
Power supply:	<ul style="list-style-type: none">• 12 V DC / 500 mA,• 48 V PoE (802.3af)
Power consumption:	<ul style="list-style-type: none">≤ 6 W (operation)≤ 4 W (Standby mode)
Operation temp:	-10 °C ... 55 °C
Color:	Black

DELTA-OPTI Monika Matysiak; <https://www.delta.poznan.pl>
POL; 60-713 Poznań; Graniczna 10
e-mail: delta-opti@delta.poznan.pl; tel: +(48) 61 864 69 60

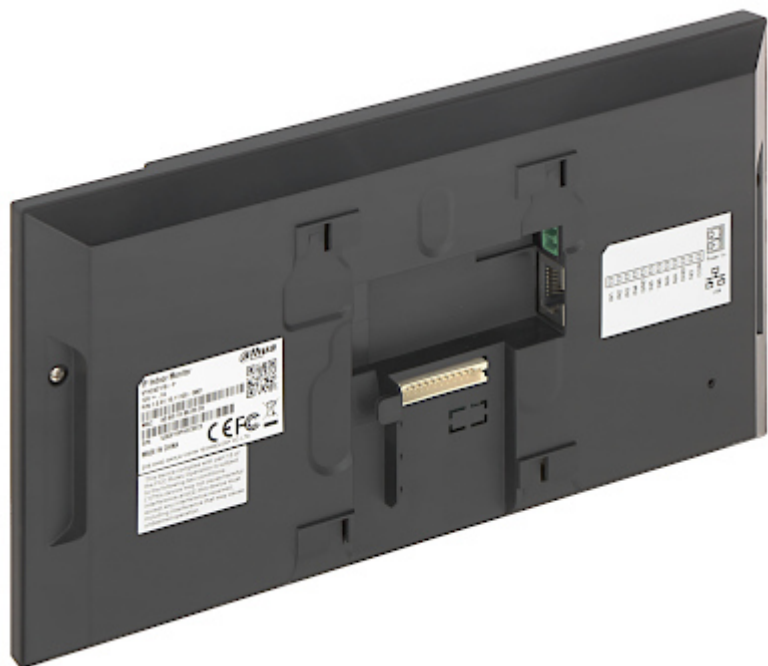
Weight:	0.35 kg
Dimensions:	222 x 120 x 22 mm
Supported languages:	Polish, English, Bulgarian, Czech, Finnish, Slovenian, Slovak, Hungarian
Manufacturer / Brand:	DAHUA
Guarantee:	3 years

PRESENTATION

Front view:

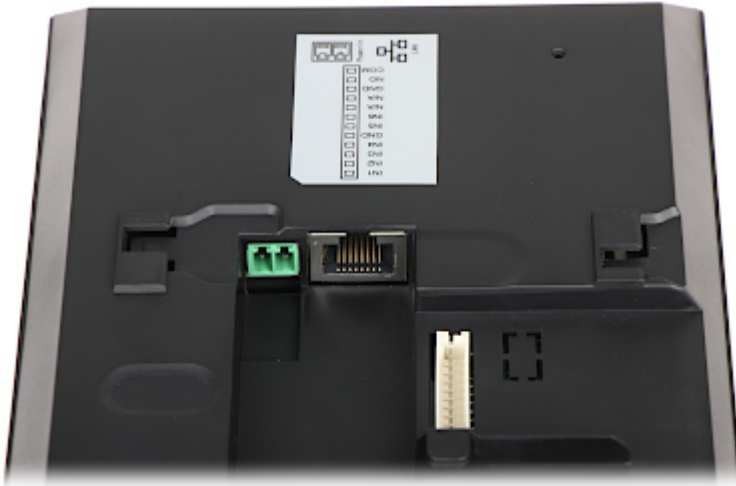


Rear view:

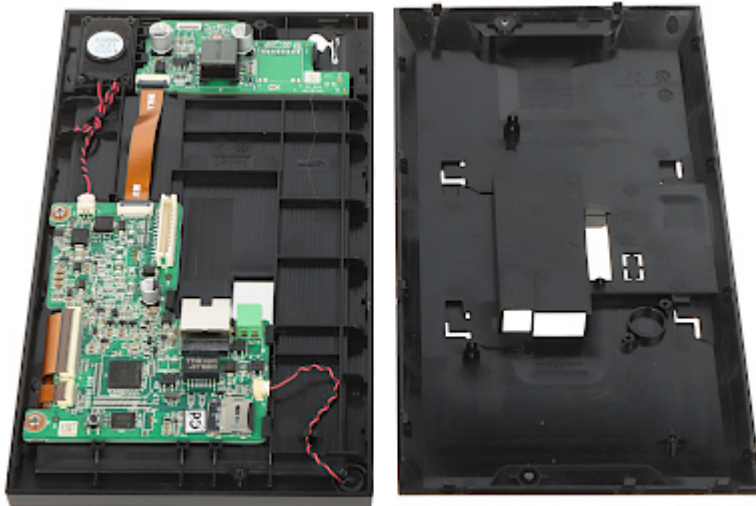


Connectors view:





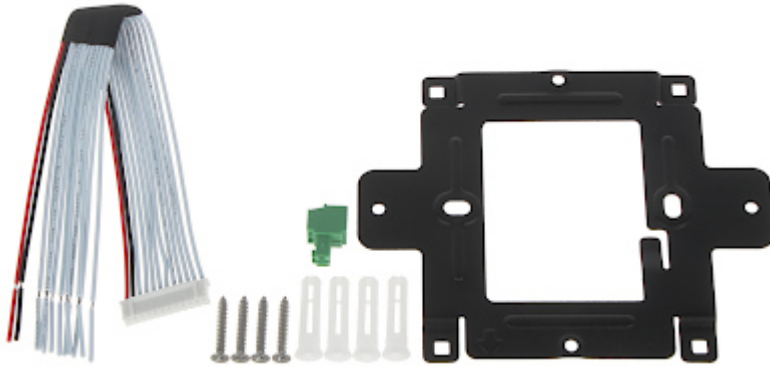
Internal view of the housing:



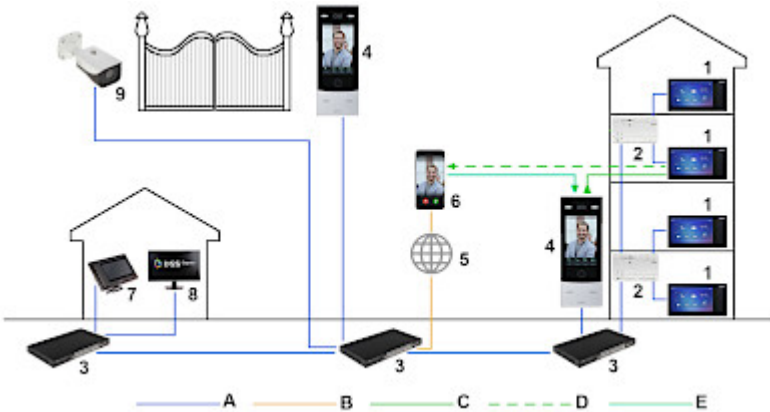
Memory card slot:



In the kit:



Example of application:



- 1. VTH2421FB-P
- 2. Switch PoE
- 3. Switch
- 4. Door station
- 5. INTERNET
- 6. Mobile phones support
- 7. Guard station
- 8. DSS Express
- 9. IP Camera
- A. LAN
- B. WAN
- C. Connection with the device
- D. Forward
- E. Remote door open

PACKAGE

Dimensions (L x W x H): 0x0x0 mm	Gross Weight: 0 kg
----------------------------------	--------------------

