

Code: VTH5341G-W

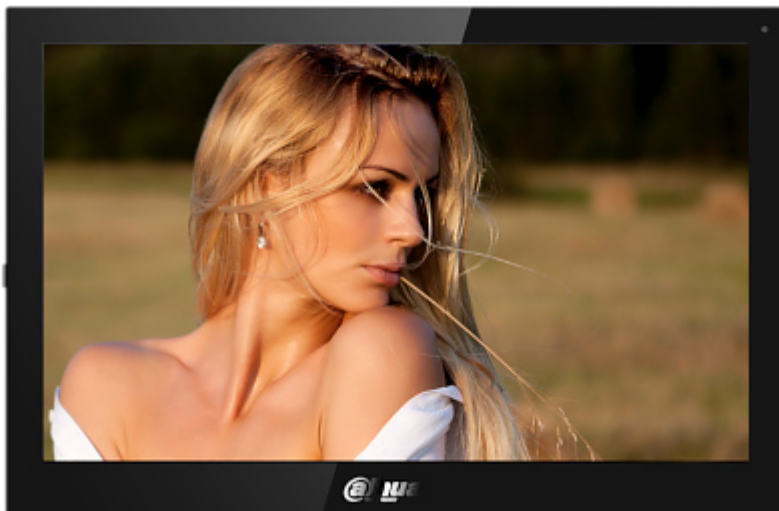
## INDOOR PANEL IP **VTH5341G-W** Wi-Fi / IP DAHUA

Net: **553.78 EUR** Gross: **553.78 EUR**

The VTH5341G-W panel has been designed to create a simple and effective system of local communication.

The device cooperates with video doorphones, and other panels working in DAHUA IP / SIP standard. The panel enables ongoing communication with the door station, registration of photos and recordings of callers. It also allows remote viewing of images from connected IP cameras. It can be also used as simple alarm control panel, or notification module by the support 8 alarm inputs. The device is controlled via the Android 8.1 system available directly using a touch screen with a diagonal of 10".

ATTENTION! The device does not support the Dahua analogue system.



### SPECIFICATION

Compatibility:	Interphone installation - DAHUA IP
Shield:	10 " capacitive touch screen
Resolution:	1024 x 600
Internal memory:	—
Memory card slot:	Micro SD memory cards up to 256GB support (possible local recording)
Main features:	<ul style="list-style-type: none"><li>• Wi-Fi module - 2.4 GHz IEEE 802.11 b/g/n,</li><li>• Protections : WEP 64/128-bit, WPA/WPA2, WPA-PSK/WPA2-PSK, WPS,</li><li>• Microphone built-in,</li><li>• Speaker built-in,</li><li>• Echo suppression and reduction / digital noise reduction,</li><li>• Bidirectional communication,</li><li>• Smooth adjustment of monitor parameters: image brightness, ring tone volume and conversation volume,</li><li>• The ability to automatically take and save photos if you do not answer to the bell button,</li><li>• The ability to record a short video message in the absence of a response to the bell button,</li><li>• IP Dahua cameras support,</li><li>• DND mode,</li><li>• SOS support,</li><li>• Android 8.1 system ,</li></ul>
Controlling:	capacitive touch screen
Alarm inputs:	8 ( 1 - as a bell )
Alarm outputs:	1
Power supply:	<ul style="list-style-type: none"><li>• 12 V DC / 1 A,</li><li>• PoE (802.3af)</li></ul>
Power consumption:	<ul style="list-style-type: none"><li>≤ 7 W (operation)</li><li>≤ 1.5 W (standby)</li></ul>
Operation temp:	-10 °C ... 55 °C
Color:	Black
Weight:	0.77 kg

DELTA-OPTI Monika Matysiak; <https://www.delta.poznan.pl>  
POL; 60-713 Poznań; Graniczna 10  
e-mail: [delta-opti@delta.poznan.pl](mailto:delta-opti@delta.poznan.pl); tel: +(48) 61 864 69 60

Dimensions:	260 x 170 x 25 mm
Supported languages:	English Polish
Manufacturer / Brand:	DAHUA
Guarantee:	<b>3 years</b>

## PACKAGE

Dimensions (L x W x H): 0x0x0 mm	Gross Weight: 0 kg
----------------------------------	--------------------

