

Code: DS-KD8003-IME2

VIDEO DOORPHONE DS-KD8003-IME2 Hikvision

Net: 160.85 EUR Gross: 197.85 EUR

The DS-KD8003-IME2 module is the main unit of the video doorphone modular system of Hikvision brand.

The DS-KD8003-IME2 is designed to cooperate with video doorphones and panels working in HIKVISION 2-Wire standard.



SPECIFICATION

Compatibility:	HIKVISION 2-wire
Doorbell button:	1 pcs
Sensor:	2.1 Mpx CMOS
Camera resolution:	1920 x 1080 - 1080p
Camera view angle:	180 °
Image compression method:	H.264
IR illuminator:	✓
Network protocols:	TCP/IP, RTSP
Alarm inputs:	4 pcs
Relay outputs:	2 x NO/NC
Main features:	<ul style="list-style-type: none">• Bidirectional communication,• Microphone built-in,• Speakers built-in,• Noise suppression and echo cancellation,• Tamper detection - removing from mounting surface,• Installation of DS-KD-xx series modules takes place in dedicated DS-KD-ACF series housings (flush-mounted housings) and DS-KD-ACW series housings (surface-mounted housings)
Power supply:	<ul style="list-style-type: none">• 24 V DC - HIKVISION 2-wire• 12 V DC (power adapter not included)

DELTA-OPTI Monika Matysiak; <https://www.delta.poznan.pl>
POL; 60-713 Poznań; Graniczna 10
e-mail: delta-opti@delta.poznan.pl; tel: +(48) 61 864 69 60

Power consumption:	< 16 W @ 24 V DC < 20 W @ 12 V DC
Operation temp:	-40 °C ... 60 °C
Housing:	Metal
Color:	Black
"Index of Protection":	IP65
Weight:	0.38 kg
Dimensions:	100 x 98 x 44 mm
Supported languages:	Polish, English, Bulgarian, Croatian, Czech, French, Greek, Spanish, Dutch, German, Portuguese, Romanian, Serbian, Hungarian, Italian
Manufacturer / Brand:	Hikvision
SAP Code:	305301759
Guarantee:	3 years

PRESENTATION

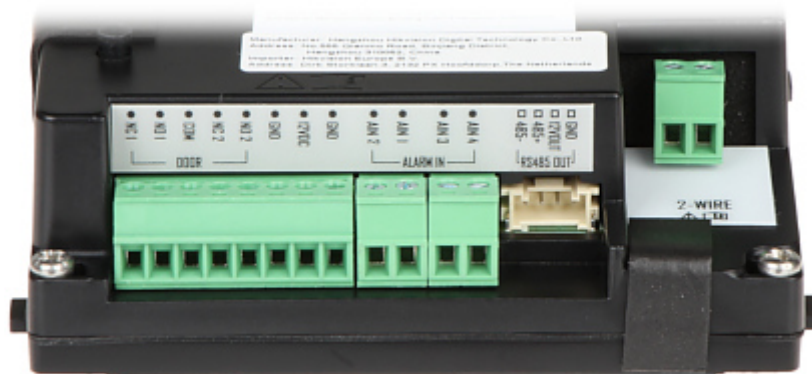
Front view:



Rear view:



Connectors view:



Connection schematic diagram:



1. Indoor panel
2. Video doorphone
3. Router
4. Power adapter
5. 1-pair cable
6. Twisted-pair cable
7. Wi-Fi
8. Power supply cable

In the kit:

