

Code: DSC-LC-L1ST

BRACKET FOR MOTION DETECTORS **DSC-LC-L1ST**

Net: **2.16 EUR** Gross: **2.16 EUR**



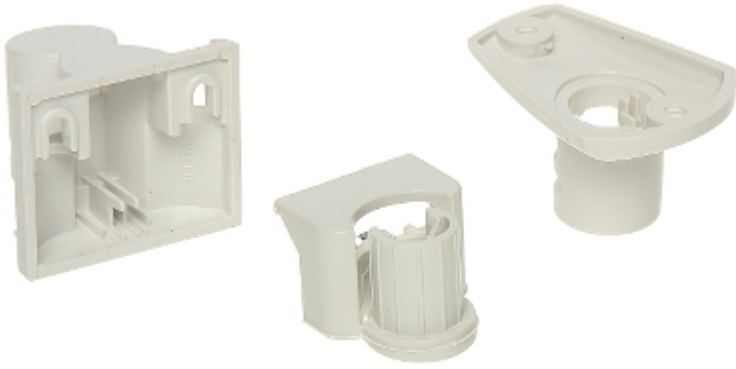
SPECIFICATION

Application:	Detectors from DSC LC series
Tilt angle adjustment:	0 °
Swivel angle adjustment:	± 45 °
Housing:	Plastic
Assembly:	Universal bracket, which allows to easy wall or ceiling mounting
Weight:	0.015 kg (wall-mounted) 0.011 kg (ceiling-mounted)
Dimensions:	42 x 45 x 34 mm (wall-mounted) 36 x 47 x 31 mm (ceiling-mounted)
Guarantee:	2 years

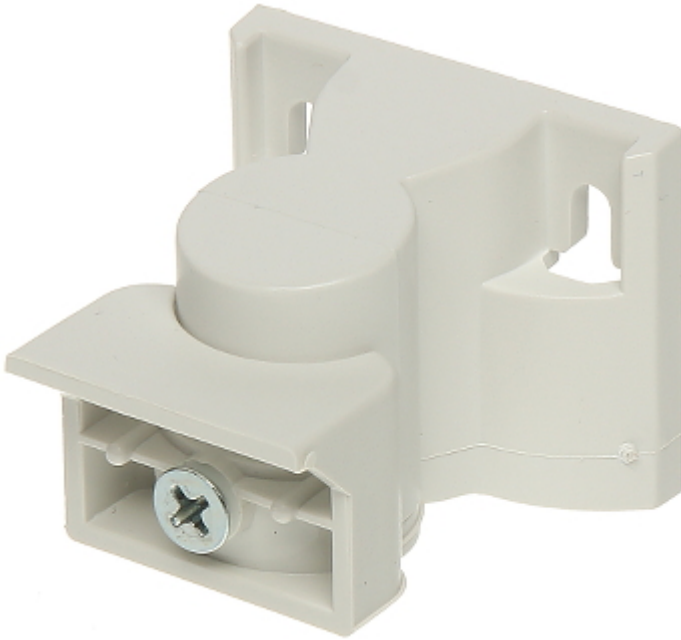
PRESENTATION

Particular elements:





Method of mounting:



Method of mounting:



In the kit:



PACKAGE

Dimensions (L x W x H): 0x0x0 mm	Gross Weight: 0 kg
----------------------------------	--------------------

