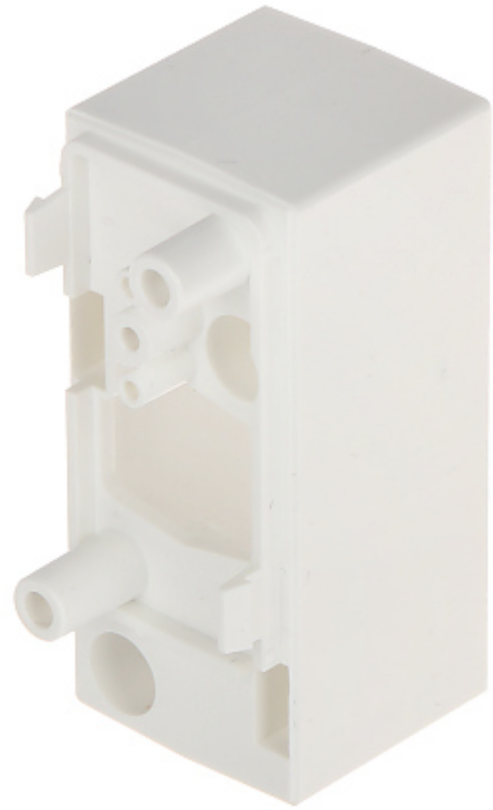


Code: BRACKET-E-3

## DISTANCE FOR A MODULAR BRACKET FOR MOTION DETECTORS

### **BRACKET-E-3 SATEL**

Net: **1.91 EUR** Gross: **2.35 EUR**



The BRACKET-E-3 distance is an element of the modular bracket for BRACKET-E motion detectors.

#### **SPECIFICATION**

Support:	BRACKET-E-4, BRACKET-E-1, BRACKET-E-6
Color:	White
Weight:	0.024 kg
Manufacturer / Brand:	SATEL
Guarantee:	2 years

#### **PRESENTATION**



DELTA-OPTI Monika Matysiak; <https://www.delta.poznan.pl>  
POL; 60-713 Poznań; Graniczna 10  
e-mail: [delta-opti@delta.poznan.pl](mailto:delta-opti@delta.poznan.pl); tel: +(48) 61 864 69 60



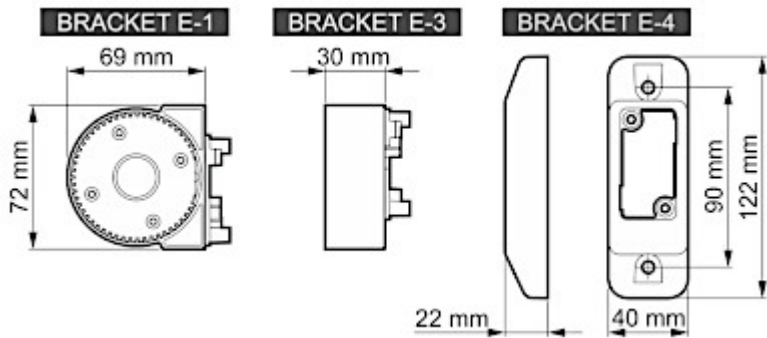


Side view:

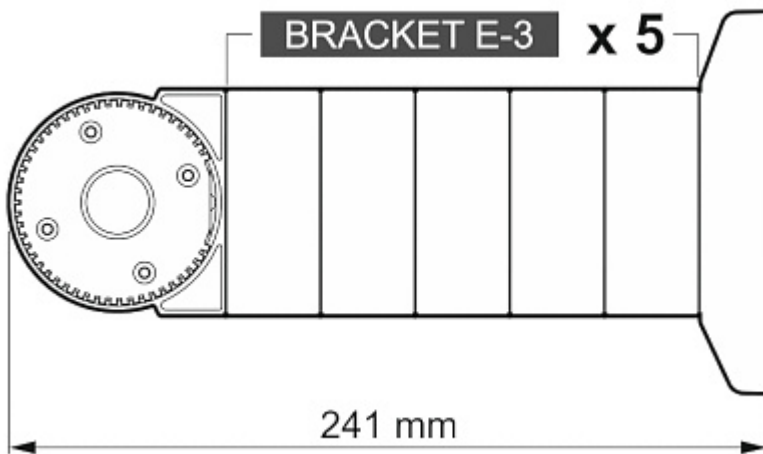
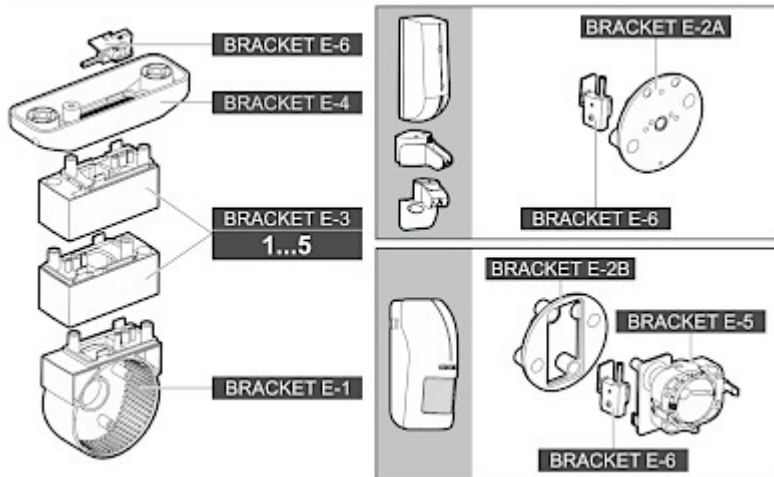


Dimensions:





Example of application:



In the kit:



## PACKAGE

Dimensions (L x W x H): 0x0x0 mm	Gross Weight: 0 kg
----------------------------------	--------------------

DELTA-OPTI Monika Matysiak; <https://www.delta.poznan.pl>  
 POL; 60-713 Poznań; Graniczna 10  
 e-mail: delta-opti@delta.poznan.pl; tel: +(48) 61 864 69 60



DELTA-OPTI Monika Matysiak; <https://www.delta.poznan.pl>  
POL; 60-713 Poznań; Graniczna 10  
e-mail: delta-opti@delta.poznan.pl; tel: +(48) 61 864 69 60