

Code: BRACKET-A

## BRACKET FOR MOTION DETECTORS **BRACKET-A** SATEL

Net: **2.33 EUR** Gross: **2.87 EUR**



Bracket for motion detectors.

### SPECIFICATION

Application:	AMBER, AMBER 2E, APD-100, APMD-150, AQUA Luna, AQUA Plus, AQUA Plus 2E, AQUA Pro, AQUA S, COBALT, COBALT Plus, COBALT Pro, GRAPHITE, GREY, GREY Plus, IVORY, MPD-300, NAVY, SILVER, TOPAZ
Tilt angle adjustment:	30 °
Swivel angle adjustment:	90 °
Assembly:	Universal bracket, which allows to easy wall or ceiling mounting
Weight:	0.025 kg
Manufacturer / Brand:	SATEL
Guarantee:	2 years

### PRESENTATION

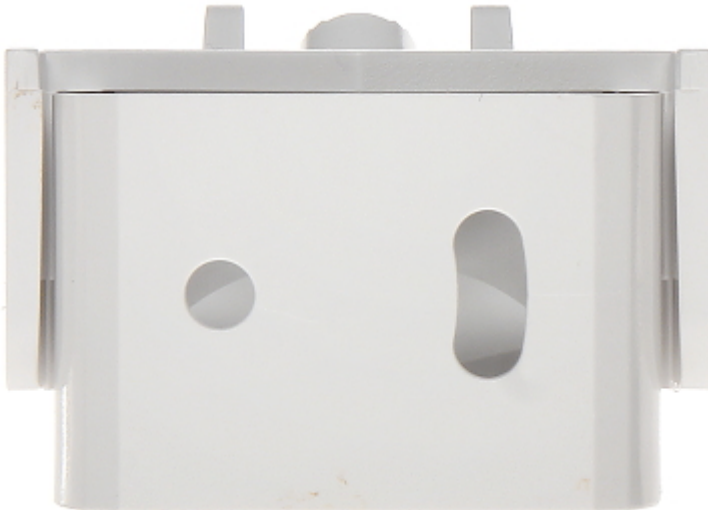
Bottom view:



DELTA-OPTI Monika Matysiak; <https://www.delta.poznan.pl>  
POL; 60-713 Poznań; Graniczna 10  
e-mail: [delta-opti@delta.poznan.pl](mailto:delta-opti@delta.poznan.pl); tel: +(48) 61 864 69 60



Mounting side view:



Example of application:





In the kit:



## PACKAGE

Dimensions (L x W x H): 0x0x0 mm	Gross Weight: 0 kg
----------------------------------	--------------------



DELTA-OPTI Monika Matysiak; <https://www.delta.poznan.pl>  
POL; 60-713 Poznań; Graniczna 10  
e-mail: [delta-opti@delta.poznan.pl](mailto:delta-opti@delta.poznan.pl); tel: +(48) 61 864 69 60