

Code: DIGIVOX-2V2

INTERFACE FOR DIGITAL BROADCASTING **DIGIVOX-2V2**

Net: **20.07 EUR** Gross: **24.69 EUR**

The DIGIVOX-2V2 is a passive, no power supply system that interfaces the computer with the radio. The device is designed for digital modes that use the sound card as a modem.

DIGIVOX-2V2 has been tested with the following applications: Winlink Express, FLDIGI, JS8Call, WSJT-X, Ham Radio Deluxe, KG-STV.

The interface is dedicated to radios without derived PTT, e.g. Baofeng, Anytone, Kenwood, Woxun.



SPECIFICATION

Device type:	Passive
Connectors type:	<ul style="list-style-type: none">• PC AUDIO : 2x Jack 3.5 mm socket,• TO RADIO : 4x detachable cable terminals
PTT output:	"Open Collector" (OC) type max. 30 V / 300 mA
PTT activation time:	20 ms
PTT off time:	5 ms
Minimum value of the audio signal from the sound card:	250 mV RMS
Galvanic isolation:	600 V
Main features:	<ul style="list-style-type: none">• It allows you to connect any VHF/UHF or KF radio to a computer• Works very well with handheld radios such as Baofeng• Provides full and complete galvanic isolation between radio and computer (600V)• It does not require an external power supply• No need for a serial, parallel or USB port - the connection to the computer is done only through the audio input/output paths of the sound card• Works with most computer applications intended for digital broadcasting, e.g. Packet, PSK31, RTTY, SSTV, FAX• It works very well with the Winlink Express application (electronic mail using radio waves), which allows you to send messages in the absence of Internet via a gateway (e.g. Poznań SR3WLK) or directly (peer-to-peer)
Operation temp:	-20 °C ... 55 °C
Weight:	0.94 kg
Dimensions:	118 x 30 x 59
Manufacturer / Brand:	DELTA
Guarantee:	2 years

PRESENTATION

DELTA-OPTI Monika Matysiak; <https://www.delta.poznan.pl>
POL; 60-713 Poznań; Graniczna 10
e-mail: delta-opti@delta.poznan.pl; tel: +(48) 61 864 69 60

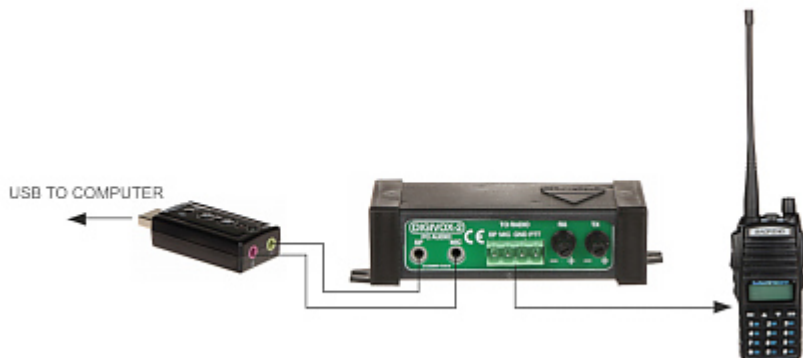
Front view:



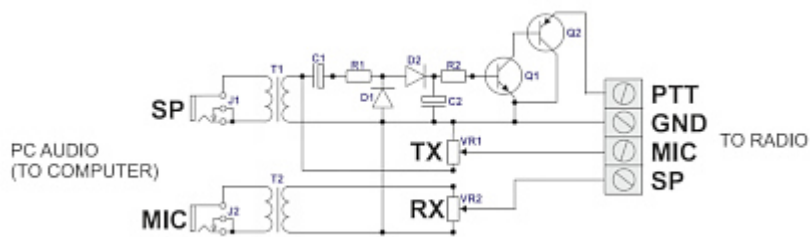
Top view:



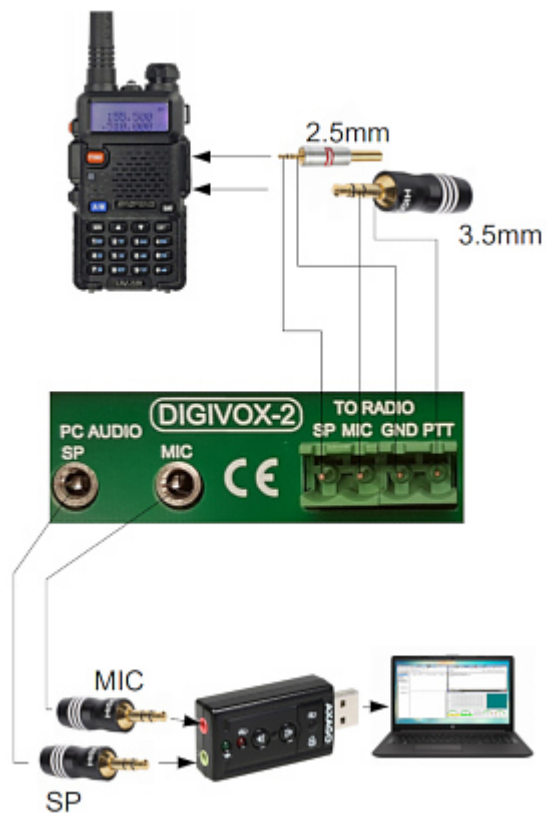
Connection diagram:



Schematic diagram:



Example connection using the DIGIVOX-2 modem:



PACKAGE

Dimensions (L x W x H): 0x0x0 mm	Gross Weight: 0 kg
----------------------------------	--------------------

