

Code: IPC-HFW3549E-AS-LED-0280B

IP CAMERA **IPC-HFW3549E-AS-LED-0280B** WizSense - 5 Mpx 2.8 mm DAHUA

Net: **296.07 EUR** Gross: **296.07 EUR**

IP camera with efficient H.264 / H.265 image compression algorithm for clear and smooth video streaming at maximal resolution of 5 MPx.

The FULL-COLOR series camera allows to obtain clear, colorful image even in very poor lighting conditions. PoE powering possibility, compatible with the 802.3af standard makes the device more universal and easier to install.



SPECIFICATION

| | |
|------------------------------------|---|
| Standard: | TCP/IP |
| Sensor: | 1/2.7 " Progressive Scan CMOS |
| Matrix size: | 5 Mpx |
| Resolution: | 2592 x 1944 - 5 Mpx , 2688 x 1520 - 4 Mpx , 2304 x 1296 - 3 Mpx , 1920 x 1080 - 1080p , 1280 x 960 - 1.3 Mpx , 1280 x 720 - 720p |
| Lens: | 2.8 mm |
| View angle: | <ul style="list-style-type: none">• 98 ° (manufacturer data)• 93 ° (our tests result) |
| White light LED illuminator range: | 30 m |
| Min. illumination: | 0.003 Lux / F1.0 (color) |
| S/N ratio: | > 56 dB |
| RS-485 interface: | — |
| Memory card slot: | Micro SD memory cards up to 256GB support (possible local recording) |
| Image compression method: | H.265+ / H.265 / H.264+ / H.264 / MJPEG |
| Alarm inputs / outputs: | 1 / 1 |
| Audio: | <ul style="list-style-type: none">• Microphone built-in• External microphone input• Audio output• Bi-directional audio streaming support• Audio detection |

DELTA-OPTI Monika Matysiak; <https://www.delta.poznan.pl>
POL; 60-713 Poznań; Graniczna 10
e-mail: delta-opti@delta.poznan.pl; tel: +(48) 61 864 69 60

| | |
|--------------------------------|--|
| Main stream frame rate: | 20 fps @ 5 Mpx 25 @ 4 Mpx |
| Network interface: | 10/100 Base-T (RJ-45) |
| Network protocols: | IPv4/IPv6, HTTP, HTTPS, TCP, UDP, ARP, RTP, RTSP, RTCP, RTMP, SMTP, FTP, SFTP, DHCP, DNS, DDNS, QoS, UPnP, NTP, Multicast, ICMP, IGMP, NFS, SAMBA, PPPoE, IEEE 802.1x, SNMP |
| WEB Server: | Built-in |
| Max. number of on-line users: | 20 |
| ONVIF: | 19.06 |
| Main features: | <ul style="list-style-type: none"> • WDR - 120 dB - Wide Dynamic Range • 3D-DNR - Digital Noise Reduction • ROI - improve the quality of selected parts of image • Possibility to change the resolution, quality and bit rate • Motion Detection • Configurable Privacy Zones • Mirror - Mirror image • IVS analysis : intrusion, crossing the line (tripwire) - classification of people and vehicles, scene changing |
| Power supply: | <ul style="list-style-type: none"> • PoE (802.3af), • 12 V DC / 700 mA |
| Power consumption: | < 8.4 W |
| Mobile phones support: | Port no.: 37777 or access by a cloud (P2P) <ul style="list-style-type: none"> • Android: Free application DMSS • iOS (iPhone): Free application DMSS |
| Default IP address: | 192.168.1.108 |
| Default admin user / password: | admin / - The administrator password should be set at the first start |
| Web browser access ports: | 80, 37777 |
| PC client access ports: | 37777 |
| Mobile client access ports: | 37777 |
| Port ONVIF: | 80 |
| RTSP URL: | rtsp://admin:hasło@192.168.1.108:554/cam/realmonitor?channel=1&subtype=0 - Main stream rtsp://admin:hasło@192.168.1.108:554/cam/realmonitor?channel=1&subtype=1 - Sub stream |
| Housing: | Compact - Metal |
| Color: | White + Black |
| "Index of Protection": | IP67 |
| Vandal-proof: | — |
| Operation temp: | -40 °C ... 60 °C |
| Weight: | 0.59 kg |
| Dimensions: | 193 x 71 x 66 mm |
| Supported languages: | Polish, English, Czech, French, Spanish, Dutch, German, Russian, Portuguese, Italian |
| Manufacturer / Brand: | DAHUA |
| Guarantee: | 3 years |

PRESENTATION



DELTA-OPTI Monika Matysiak; <https://www.delta.poznan.pl>
 POL; 60-713 Poznań; Graniczna 10
 e-mail: delta-opti@delta.poznan.pl; tel: +(48) 61 864 69 60



Side view:



Memory card slot:



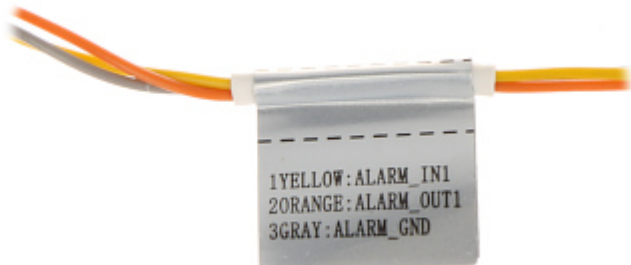
Camera mounting side view:



Camera connectors:



Connectors description:



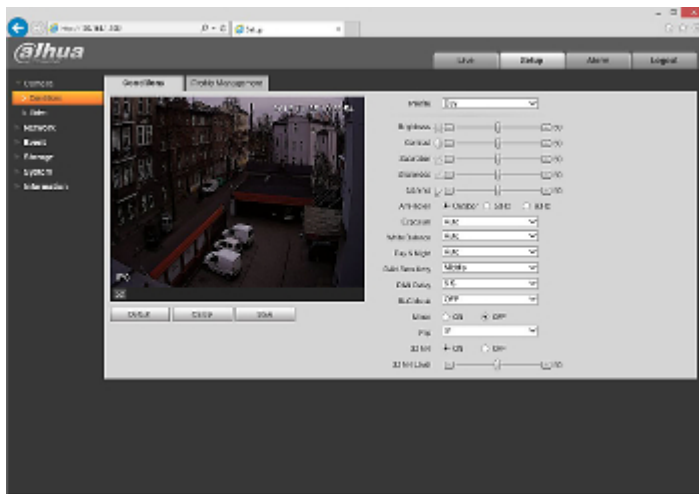
Presentation of the Full Color technology used in the camera:

:
See how to initialize DAHUA cameras:

:
In the kit:



Example captures of device interface:

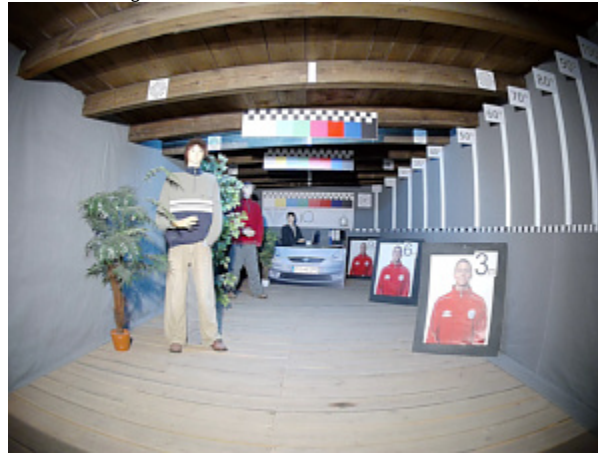


OUR TESTS



DELTA-OPTI Monika Matysiak; <https://www.delta.poznan.pl>
POL; 60-713 Poznań; Graniczna 10
e-mail: delta-opti@delta.poznan.pl; tel: +(48) 61 864 69 60

Camera image at artificial illumination (about 30Lux):



Camera image at night conditions with internal built-in LED illuminator on:



Camera image at direct strong light opposite to camera:



PACKAGE

| | |
|----------------------------------|--------------------|
| Dimensions (L x W x H): 0x0x0 mm | Gross Weight: 0 kg |
|----------------------------------|--------------------|