

IP CAMERA **IPC-HFW3449T1-AS-PV-0280B-S3** TiOC Full-Color - 4 Mpx 2.8 mm DAHUA

Net: **1 799.00 PLN** Gross: **2 212.77 PLN**

The **DAHUA TiOC** series of cameras are modern IP cameras combining 3 innovative technologies: **Dahua Full-Color** - 24/7 color image, **Wiz-Sense** - AI artificial intelligence functions and audio-visual **active deterrence**

In addition, the camera has the function of active deterrence of intruders using flashing red and blue light and siren sound.

PoE powering possibility, compatible with the 802.3af standard makes the device more universal and easier to install.



SPECIFICATION

Standard:	TCP/IP
Sensor:	1/2.7 " Progressive Scan CMOS
Matrix size:	4 Mpx
Resolution:	2688 x 1520 - 4 Mpx , 2560 x 1440 - 3.7 Mpx , 2304 x 1296 - 3 Mpx , 1920 x 1080 - 1080p , 1280 x 960 - 1.3 Mpx , 1280 x 720 - 720p
Scanning system:	Progressive
Lens:	2.8 mm
View angle:	<ul style="list-style-type: none"> • 101 ° (manufacturer data) • 97 ° (our tests result)
Range of IR illumination:	30 m
White light LED illuminator range:	30 m
Min. illumination:	0.003 Lux / F1.0 (color)
S/N ratio:	> 56 dB
RS-485 interface:	—
Memory card slot:	Micro SD memory cards up to 256GB support (possible local recording)
Image compression method:	AI H.265 / H.265+ / AI H.264 / H.264+
Alarm inputs / outputs:	1 / 1



Audio:	<ul style="list-style-type: none"> • Microphone built-in - 2 pcs, • External microphone input, • Speaker built-in, • Audio output • Bi-directional audio streaming support • Audio detection
Main stream frame rate:	25 fps @ 4 Mpx
Network interface:	10/100 Base-T (RJ-45)
Network protocols:	IPv4/IPv6, HTTP, TCP, UDP, ARP, RTP, RTSP, RTCP, RTMP, SMTP, FTP, SFTP, DHCP, DNS, DDNS, QoS, UPnP, NTP, Multicast, ICMP, IGMP, NFS, SAMBA, PPPoE, SNMP
WEB Server:	Built-in
Max. number of on-line users:	20
ONVIF:	20.12
Mobile phones support:	Port no.: 37777 or access by a cloud (P2P) <ul style="list-style-type: none"> • Android: Free application DMSS • iOS (iPhone): Free application DMSS
Default IP address:	192.168.1.108
Default admin user / password:	admin / - The administrator password should be set at the first start
Web browser access ports:	80, 37777
PC client access ports:	37777
Mobile client access ports:	37777
Port ONVIF:	80
RTSP URL:	rtsp://admin:hasło@192.168.1.108:554/cam/realmonitor?channel=1&subtype=0 - Main stream rtsp://admin:hasło@192.168.1.108:554/cam/realmonitor?channel=1&subtype=1 - Sub stream
Main features:	<ul style="list-style-type: none"> • Active deterrence function, Alternately flashing LEDs: red and blue - frequency configuration, Siren sound - 3 volume levels • WDR - 120 dB - Wide Dynamic Range • 3D-DNR - Digital Noise Reduction • ROI - improve the quality of selected parts of image • F-DNR (Defog) - Reduction of image noise caused by precipitation • SMD 3.0 - searching for an object classified as: human, motor vehicle - increased detection distance and resistance to false alarms • SSA - Smart Scene Adaptive - intelligent scene adaptation by automatically adjusting the exposure parameters to obtain a better image • BLC/HLC - Back Light / High Light Compensation • Day/night mode • Full Color - colorful night mode • Auto White Balance • AGC - Automatic Gain Control • Motion Detection - max. 4 zones • Privacy zones - max. 8 • Mirror - Mirror image • Light and sound alarm • White light (LED) illuminator built-in : 2 LEDs • IVS analysis : crossing the line (tripwire), intrusion - classification of people and vehicles, scene changing, Audio detection
Power supply:	<ul style="list-style-type: none"> • PoE (802.3af), • 12 V DC / 660 mA
Power consumption:	max. 9.7 W @ PoE max. 7.9 W @ 12 V
Housing:	Compact - Metal
Color:	White + Black
"Index of Protection":	IP67
Vandal-proof:	—

Operation temp:	-40 °C ... 60 °C
Weight:	1 kg
Dimensions:	289 x 95 x 85 mm
Supported languages:	Polish, English, Czech, French, Spanish, Dutch, German, Russian, Portuguese, Romanian, Ukrainian, Hungarian, Italian
Manufacturer / Brand:	DAHUA
Guarantee:	3 years

PRESENTATION



Side view:



Bottom view:



Memory card slot and "Reset" button:



Camera mounting side view:



Camera connectors:



Connectors description:



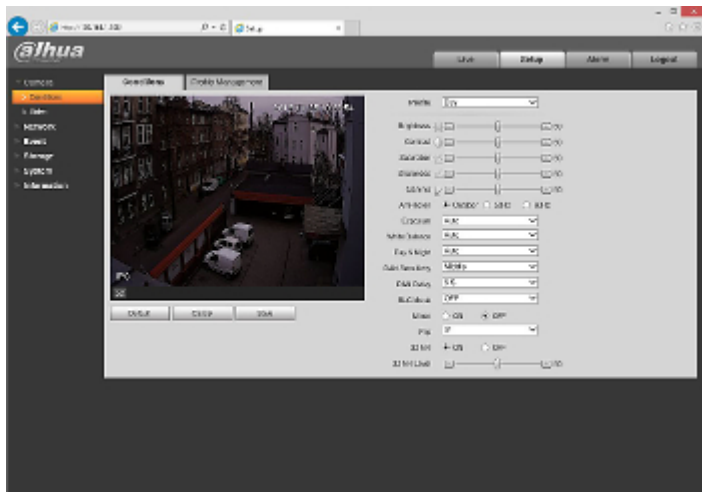
Presentation of the TiOC technology used in the camera:

:
See how to initialize DAHUA cameras:
:
In the kit:



Example captures of device interface:





OUR TESTS

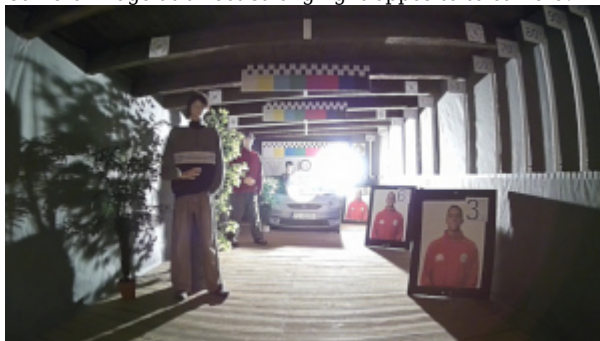
Camera image at artificial illumination (about 30Lux):



Camera image at night conditions with internal built-in LED illuminator on:



Camera image at direct strong light opposite to camera:



PACKAGE

Dimensions (L x W x H): 0x0x0 mm	Gross Weight: 0 kg
----------------------------------	--------------------

DELTA-OPTI Monika Matysiak; <https://www.delta.poznan.pl>
 POL; 60-713 Poznań; Graniczna 10
 e-mail: delta-opti@delta.poznan.pl; tel: +(48) 61 864 69 60



DELTA-OPTI Monika Matysiak; <https://www.delta.poznan.pl>
POL; 60-713 Poznań; Graniczna 10
e-mail: delta-opti@delta.poznan.pl; tel: +(48) 61 864 69 60