

Code: IPC-HFW5849T1-ASE-LED-0360B

# IP CAMERA **IPC-HFW5849T1-ASE-LED-0360B** Full-Color - 8.3 Mpx 4K UHD 3.6 mm DAHUA

Net: **864.19 EUR** Gross: **1 062.95 EUR**

The FULL-COLOR series camera does not have a black and white mode, but allows you to get a clear, color image even in very poor lighting conditions.

PoE powering possibility, compatible with the 802.3af standard makes the device more universal and easier to install.

The camera has extensive functions of intelligent image analysis.



## SPECIFICATION

Standard:	TCP/IP
Sensor:	1/1.2 " Progressive Scan CMOS
Matrix size:	8.3 Mpx
Resolution:	3840 x 2160 - 8.3 Mpx 4K UHD , 3072 x 2048 - 6 Mpx , 3072 x 1728 - 5 Mpx , 2592 x 1944 - 5 Mpx , 2688 x 1520 - 4 Mpx , 2048 x 1536 - 3 Mpx , 2304 x 1296 - 3 Mpx , 1920 x 1080 - 1080p 1280 x 960 - 1.3 Mpx 1280 x 720 - 720p
Scanning system:	Progressive
Lens:	3.6 mm
View angle:	• 91 ° (manufacturer data) • 85 ° (our tests result)
White light LED illuminator range:	≤ 50 m
Min. illumination:	0.0005 Lux / F1.0
S/N ratio:	> 56 dB
RS-485 interface:	—
Memory card slot:	Micro SD memory cards up to 256GB support (possible local recording)
Image compression method:	H.265+ / H.265 / H.264+ / H.264 / MJPEG
Alarm inputs / outputs:	1 / 1

Audio:	<ul style="list-style-type: none"> <li>• Microphone built-in,</li> <li>• External microphone input,</li> <li>• Speaker built-in,</li> <li>• Audio output</li> <li>• Bi-directional audio streaming support</li> <li>• Audio detection</li> </ul>
Main stream frame rate:	25 fps @ 8.3 Mpx
Network interface:	10/100 Base-T (RJ-45)
Network protocols:	IPv4/IPv6, HTTP, HTTPS, TCP, UDP, ARP, RTP, RTSP, RTCP, RTMP, SMTP, FTP, SFTP, DHCP, DNS, DDNS, QoS, UPnP, NTP, Multicast, ICMP, IGMP, NFS, SAMBA, PPPoE, IEEE 802.1x, SNMP
WEB Server:	Built-in
Max. number of on-line users:	20
ONVIF:	20.12
Mobile phones support:	Port no.: 37777 or access by a cloud (P2P) <ul style="list-style-type: none"> <li>• Android: Free application <a href="#">DMSS</a></li> <li>• iOS (iPhone): Free application <a href="#">DMSS</a></li> </ul>
Default IP address:	192.168.1.108
Default admin user / password:	admin / - The administrator password should be set at the first start
Web browser access ports:	80, 37777
PC client access ports:	37777
Mobile client access ports:	37777
Port ONVIF:	80
RTSP URL:	rtsp://admin:hasło@192.168.1.108:554/cam/realmonitor?channel=1&subtype=0 - Main stream rtsp://admin:hasło@192.168.1.108:554/cam/realmonitor?channel=1&subtype=1 - Sub stream
Main features:	<ul style="list-style-type: none"> <li>• WDR - 140 dB - Wide Dynamic Range</li> <li>• 3D-DNR - Digital Noise Reduction</li> <li>• F-DNR (Defog) - Reduction of image noise caused by precipitation</li> <li>• ROI - improve the quality of selected parts of image</li> <li>• NAS - Network Attached Storage support - allows to connect memory resources directly to the computer network</li> <li>• BLC/HLC - Back Light / High Light Compensation</li> <li>• Full Color - colorful night mode</li> <li>• AGC - Automatic Gain Control</li> <li>• Motion Detection</li> <li>• Privacy zones - max. 8</li> <li>• Mirror - Mirror image</li> <li>• Light and sound alarm</li> <li>• Active deterrence function</li> <li>• White light (LED) illuminator built-in : 4 LEDs</li> <li>• Audio detection</li> <li>• SMD 3.0 - searching for an object classified as: human, motor vehicle - increased detection distance and resistance to false alarms</li> <li>• Heat map - the selection in the image by corresponding colors the areas with different traffic</li> <li>• IVS analysis : crossing the line (tripwire), intrusion, fast moving - classification of people and vehicles, scene changing, abandoned/missing object, detection of people gathering</li> <li>• loitering detection, face detection - advanced face capture features, counting people entering and leaving the area - configuration to 4 counting rules, counting people in a given area - configuration to 4 counting rules, Statistical Reporting</li> </ul>
Power supply:	<ul style="list-style-type: none"> <li>• PoE (802.3af),</li> <li>• ePoE,</li> <li>• 12 V DC / 930 mA</li> </ul>
Power consumption:	<ul style="list-style-type: none"> <li>• max. 12.1 W @ PoE</li> <li>• max. 11.1 W @ 12 V</li> </ul>
Housing:	Compact - Metal



Color:	White + Black
"Index of Protection":	IP67
Vandal-proof:	—
Operation temp:	-40 °C ... 60 °C
Weight:	1.14 kg
Dimensions:	289 x 95 x 85 mm
Supported languages:	Polish, English, Czech, French, Spanish, Dutch, German, Russian, Portuguese, Romanian, Ukrainian, Hungarian, Italian
Manufacturer / Brand:	DAHUA
Guarantee:	<b>3 years</b>

## PRESENTATION



Side view:



Bottom view:





Memory card slot and "Reset" button:



Camera mounting side view:



Camera connectors:





Connectors description:



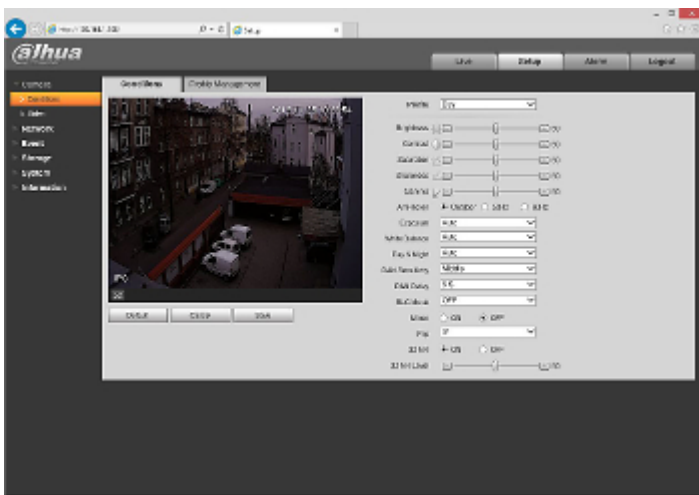
Presentation of the TiOC technology used in the camera:

:  
See how to initialize DAHUA cameras:

:  
In the kit:



Example captures of device interface:



## OUR TESTS

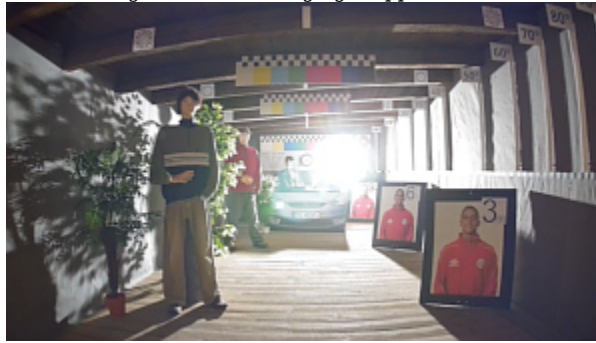
Camera image at artificial illumination (about 30Lux):



Camera image at night conditions with internal built-in LED illuminator on:



Camera image at direct strong light opposite to camera:



## PACKAGE

Dimensions (L x W x H): 0x0x0 mm	Gross Weight: 0 kg
----------------------------------	--------------------



DELTA-OPTI Monika Matysiak; <https://www.delta.poznan.pl>  
POL; 60-713 Poznań; Graniczna 10  
e-mail: [delta-opti@delta.poznan.pl](mailto:delta-opti@delta.poznan.pl); tel: +(48) 61 864 69 60