

Code: IPC-HDW3249H-AS-PV-0280B

IP CAMERA **IPC-HDW3249H-AS-PV-0280B** TiOC Full-Color - 1080p 2.8 mm DAHUA

Net: **277.14 EUR** Gross: **340.88 EUR**



The **DAHUA TiOC** series of cameras are modern IP cameras combining 3 innovative technologies: **Dahua Full-Color** - 24/7 color image, **Wiz-Sense** - AI artificial intelligence functions and audio-visual **active deterrence**

In addition, the camera has the function of active deterrence of intruders using flashing red and blue light and siren sound.

IP camera with efficient H.264 / H.265 image compression algorithm for clear and smooth video streaming at maximal resolution of 1080p. PoE powering possibility, compatible with the 802.3af standard makes the device more universal and easier to install.

SPECIFICATION

Standard:	TCP/IP
Sensor:	1/2.8 " Progressive Scan CMOS
Matrix size:	2.1 Mpx
Resolution:	1920 x 1080 - 1080p , 1280 x 960 - 1.3 Mpx , 1280 x 720 - 720p
Scanning system:	Progressive
Lens:	2.8 mm
View angle:	<ul style="list-style-type: none">• 107 ° (manufacturer data)• 102 ° (our tests result)
White light LED illuminator range:	≤ 30 m
Min. illumination:	0.0015 Lux / F1.0 (color)
S/N ratio:	> 56 dB
RS-485 interface:	—
Memory card slot:	Micro SD memory cards up to 256GB support (possible local recording)
Image compression method:	H.265+ / H.265 / H.264+ / H.264 / MJPEG
Alarm inputs / outputs:	1 / 1
Audio:	<ul style="list-style-type: none">• External microphone input,• Audio output• Bi-directional audio streaming support• Audio detection

DELTA-OPTI Monika Matysiak; <https://www.delta.poznan.pl>
POL; 60-713 Poznań; Graniczna 10
e-mail: delta-opti@delta.poznan.pl; tel: +(48) 61 864 69 60

Main stream frame rate:	• 25 fps @ 1080p
Network interface:	10/100 Base-T (RJ-45)
Network protocols:	IPv4/IPv6, HTTP, TCP, UDP, ARP, RTP, RTSP, RTCP, RTMP, SMTP, FTP, SFTP, DHCP, DNS, DDNS, QoS, UPnP, NTP, Multicast, ICMP, IGMP, NFS, SAMBA, PPPoE, SNMP
WEB Server:	Built-in
Max. number of on-line users:	20
ONVIF:	20.06
Mobile phones support:	Port no.: 37777 or access by a cloud (P2P) • Android: Free application DMSS • iOS (iPhone): Free application DMSS
Default IP address:	192.168.1.108
Default admin user / password:	admin / - The administrator password should be set at the first start
Web browser access ports:	80, 37777
PC client access ports:	37777
Mobile client access ports:	37777
Port ONVIF:	80
RTSP URL:	rtsp://admin:haslo@192.168.1.108:554/cam/realmonitor?channel=1&subtype=0 - Main stream rtsp://admin:haslo@192.168.1.108:554/cam/realmonitor?channel=1&subtype=1 - Sub stream
Main features:	<ul style="list-style-type: none"> • WDR - 120 dB - Wide Dynamic Range • 3D-DNR - Digital Noise Reduction • ROI - improve the quality of selected parts of image • BLC/HLC - Back Light / High Light Compensation • Day/Night mode (color/b&w/auto) • Full Color - colorful night mode • WB - White Balance (ATW/AWB/manual/indoor/outdoor) • AGC - Automatic Gain Control • Motion Detection • Configurable Privacy Zones • Mirror - Mirror image • Light and sound alarm • Active deterrence function • White light (LED) illuminator built-in • SMD PLUS - searching for an object classified as: human, motor vehicle, non-motor vehicle • IVS analysis : crossing the line (tripwire), intrusion - classification of people and vehicles, scene changing, Audio detection
Power supply:	<ul style="list-style-type: none"> • PoE (802.3af), • 12 V DC / 510 mA
Power consumption:	max. 7.35 W @ PoE max. 6.1 W @ 12 V
Housing:	Dome - Metal
Color:	White + Black
"Index of Protection":	IP67
Vandal-proof:	—
Operation temp:	-40 °C ... 60 °C
Weight:	0.74 kg
Dimensions:	Ø 122 x 111 mm
Supported languages:	Polish, English, Czech, French, Spanish, Dutch, German, Russian, Portuguese, Romanian, Ukrainian, Hungarian, Italian
Manufacturer / Brand:	DAHUA



Guarantee:

3 years

PRESENTATION

Camera is out from clamping ring:

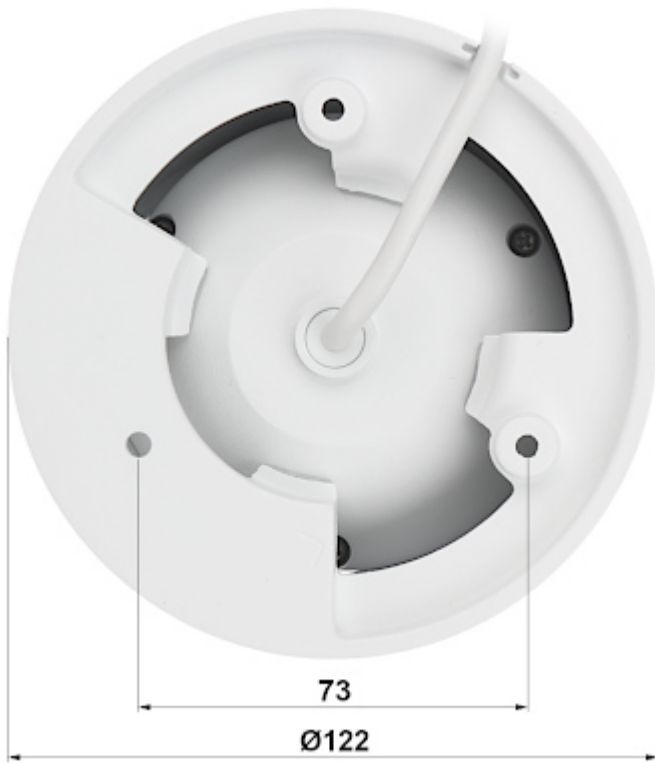


Memory card slot:



Camera mounting side view:





Camera connectors:



Connectors description:

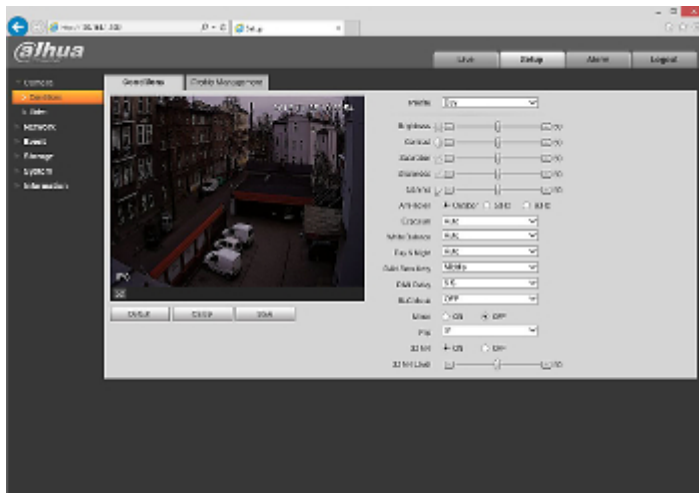


Presentation of the TiOC technology used in the camera:

:
See how to initialize DAHUA cameras:
:
In the kit:



Example captures of device interface:



OUR TESTS

Camera image at artificial illumination (about 30Lux):



DELTA-OPTI Monika Matysiak; <https://www.delta.poznan.pl>
POL; 60-713 Poznań; Graniczna 10
e-mail: delta-opti@delta.poznan.pl; tel: +(48) 61 864 69 60

Camera image at direct strong light opposite to camera:



Camera image at night conditions with internal built-in LED illuminator on:

