

Code: IPC-HDW3849H-AS-PV-0280B

IP CAMERA **IPC-HDW3849H-AS-PV-0280B** TiOC Full-Color - 8.3 Mpx 4K UHD 2.8 mm DAHUA

Net: **360.42 EUR** Gross: **443.32 EUR**



The **DAHUA TiOC** series of cameras are modern IP cameras combining 3 innovative technologies: **Dahua Full-Color** - 24/7 color image, **Wiz-Sense** - AI artificial intelligence functions and audio-visual **active deterrence**

In addition, the camera has the function of active deterrence of intruders using flashing red and blue light and siren sound.

IP camera with efficient H.264 / H.265 image compression algorithm for clear and smooth video streaming at maximal resolution of 5 MPx. PoE powering possibility, compatible with the 802.3af standard makes the device more universal and easier to install.

SPECIFICATION

| | |
|------------------------------------|--|
| Standard: | TCP/IP |
| Sensor: | 1/2.8 " Progressive Scan CMOS |
| Matrix size: | 8.3 Mpx |
| Resolution: | 3840 x 2160 - 8.3 Mpx 4K UHD , 3072 x 2048 - 6 Mpx , 3072 x 1728 - 5 Mpx , 2592 x 1944 - 5 Mpx , 2688 x 1520 - 4 Mpx , 2048 x 1536 - 3 Mpx , 2304 x 1296 - 3 Mpx , 1920 x 1080 - 1080p , 1280 x 960 - 1.3 Mpx , 1280 x 720 - 720p |
| Scanning system: | Progressive |
| Lens: | 2.8 mm |
| View angle: | <ul style="list-style-type: none">• 107 ° (manufacturer data)• 100 ° (our tests result) |
| White light LED illuminator range: | ≤ 30 m |
| Min. illumination: | 0.007 Lux / F1.4 |
| S/N ratio: | > 56 dB |
| RS-485 interface: | — |
| Memory card slot: | Micro SD memory cards up to 256GB support (possible local recording) |
| Image compression method: | H.265+ / H.265 / H.264+ / H.264 / MJPEG |

DELTA-OPTI Monika Matysiak; <https://www.delta.poznan.pl>
POL; 60-713 Poznań; Graniczna 10
e-mail: delta-opti@delta.poznan.pl; tel: +(48) 61 864 69 60

| | |
|--------------------------------|---|
| Alarm inputs / outputs: | 1 / 1 |
| Audio: | <ul style="list-style-type: none"> • External microphone input, • Audio output, • Bi-directional audio streaming support, • Audio detection |
| Main stream frame rate: | 20 fps @ 8.3 Mpx (25 fps with Ai functions off) |
| Network interface: | 10/100 Base-T (RJ-45) |
| Network protocols: | IPv4/IPv6, HTTP, TCP, UDP, ARP, RTP, RTSP, RTCP, RTMP, SMTP, FTP, SFTP, DHCP, DNS, DDNS, QoS, UPnP, NTP, Multicast, ICMP, IGMP, NFS, SAMBA, PPPoE, SNMP |
| WEB Server: | Built-in |
| Max. number of on-line users: | 20 |
| ONVIF: | 20.06 |
| Mobile phones support: | Port no.: 37777 or access by a cloud (P2P) <ul style="list-style-type: none"> • Android: Free application DMSS • iOS (iPhone): Free application DMSS |
| Default IP address: | 192.168.1.108 |
| Default admin user / password: | admin / - The administrator password should be set at the first start |
| Web browser access ports: | 80, 37777 |
| PC client access ports: | 37777 |
| Mobile client access ports: | 37777 |
| Port ONVIF: | 80 |
| RTSP URL: | rtsp://admin:hasło@192.168.1.108:554/cam/realmonitor?channel=1&subtype=0 - Main stream rtsp://admin:hasło@192.168.1.108:554/cam/realmonitor?channel=1&subtype=1 - Sub stream |
| Main features: | <ul style="list-style-type: none"> • WDR - 120 dB - Wide Dynamic Range • 3D-DNR - Digital Noise Reduction • ROI - improve the quality of selected parts of image • SSA - Smart Scene Adaptive - intelligent scene adaptation by automatically adjusting the exposure parameters to obtain a better image • BLC/HLC - Back Light / High Light Compensation • Full Color - colorful night mode • White light (LED) illuminator built-in • AGC - Automatic Gain Control • Mirror - Mirror image • Motion Detection • Configurable Privacy Zones • Light and sound alarm • Active deterrence function • SMD PLUS - searching for an object classified as: human, motor vehicle, non-motor vehicle • IVS analysis : crossing the line (tripwire), intrusion - classification of people and vehicles, scene changing |
| Power supply: | <ul style="list-style-type: none"> • PoE (802.3af), • 12 V DC / 610 mA |
| Power consumption: | max. 8.2 W @ PoE max. 7.8 W @ 12 V |
| Housing: | Dome - Metal |
| Color: | White + Black |
| "Index of Protection": | IP67 |
| Vandal-proof: | — |
| Operation temp: | -40 °C ... 60 °C |
| Weight: | 0.74 kg |

| | |
|-----------------------|--|
| Dimensions: | Ø 122 x 111 mm |
| Supported languages: | Polish, English, Czech, French, Spanish, Dutch, German, Russian, Portuguese, Romanian, Ukrainian, Hungarian, Italian |
| Manufacturer / Brand: | DAHUA |
| Guarantee: | 3 years |

PRESENTATION

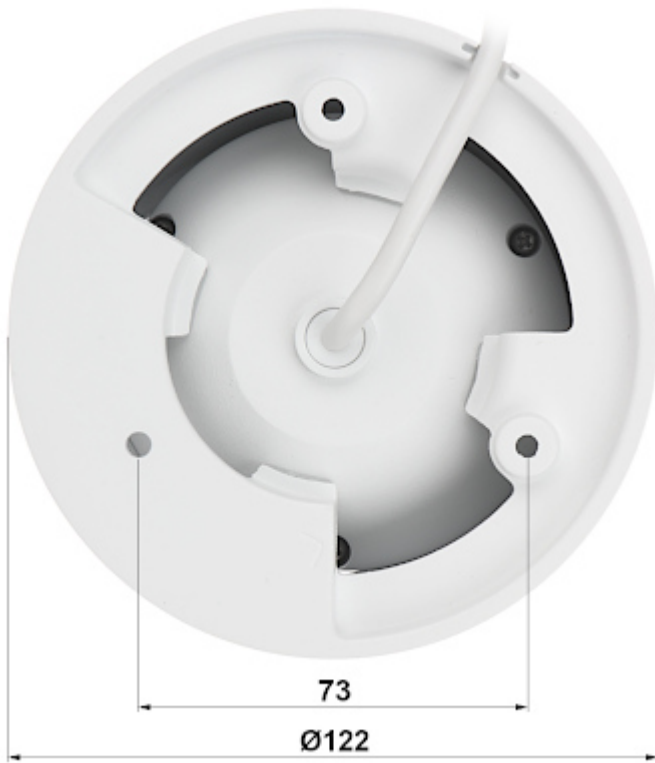
Camera is out from clamping ring:



Memory card slot:



Camera mounting side view:



Camera connectors:



Connectors description:

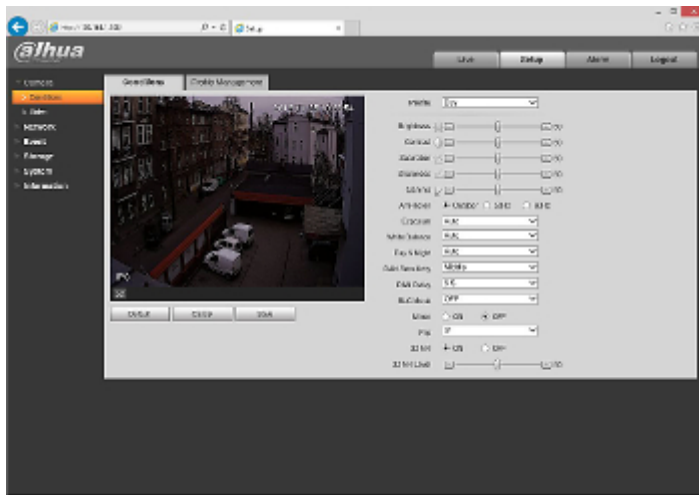


Presentation of the TiOC technology used in the camera:

:
See how to initialize DAHUA cameras:
:
In the kit:



Example captures of device interface:



OUR TESTS

Camera image at artificial illumination (about 30Lux):



DELTA-OPTI Monika Matysiak; <https://www.delta.poznan.pl>
POL; 60-713 Poznań; Graniczna 10
e-mail: delta-opti@delta.poznan.pl; tel: +(48) 61 864 69 60

Camera image at night conditions with internal built-in LED illuminator on:



Camera image at direct strong light opposite to camera:

