

Code: TL-CPE605

## ACCESS POINT **TL-CPE605** TP-LINK

Net: **48.42 EUR** Gross: **59.56 EUR**

The TL-CPE605 external access point enables wireless transmission at speeds up to 150 Mb/s in the 5 GHz band.



### SPECIFICATION

Frequency range:	5150 MHz ... 5850 MHz
Gain :	23 dBi
Standards:	802.11 a/n
Baud rates:	150 Mbps
LAN ports:	1 x 10/100 Mbps
Operation modes:	WISP, Access Point, Access Point WDS, Client, WDS client, Router or Bridge, Repeater
Protections:	Overvoltage protection
Transmitter power:	23 dBm
Memory:	64MB DDR2, 8MB Flash
Processor:	Qualcomm 560MHz, MIPS 74Kc
Power supply:	Passive PoE 16 V ... 27 V DC (power adapter included)
Power consumption:	6 W
Operation temp:	-40 °C ... 70 °C
Permissible relative humidity:	10 % ... 90 %
Weight:	0.95 kg
Dimensions:	350 x 260 x 235 mm

DELTA-OPTI Monika Matysiak; <https://www.delta.poznan.pl>  
POL; 60-713 Poznań; Graniczna 10  
e-mail: [delta-opti@delta.poznan.pl](mailto:delta-opti@delta.poznan.pl); tel: +(48) 61 864 69 60

Manufacturer / Brand:	TP-LINK
Guarantee:	<b>3 years</b>

## PRESENTATION



Mounting side view:

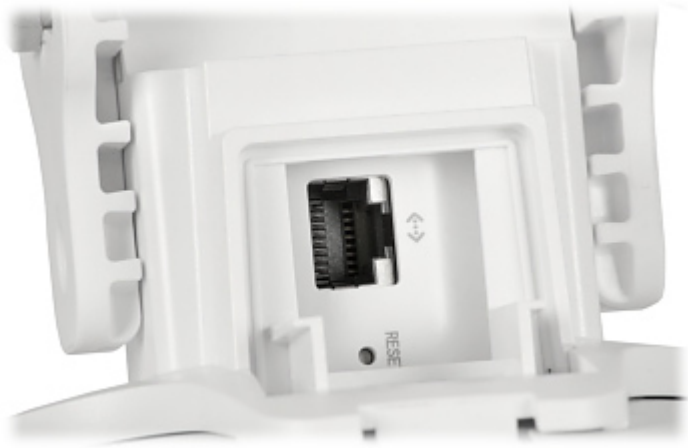


Mount:



Bottom view:





In the kit:

