

Code: IPC-HFW8630E-ZEH

IP VANDALPROOF CAMERA **IPC-HFW8630E-ZEH** - 6.3 Mpx 4.1 ... 16.4 mm - **MOTOZOOM DAHUA**

Net: **3 804.00 PLN** Gross: **4 678.92 PLN**

IP camera with efficient H.265 / H.264 image compression algorithm for clear and smooth video streaming at maximal resolution of 3072 x 2048 - 6 Mpx. Due to above it is perfect solution for surveillance systems requiring persons or vehicles recognition. The used motozoom lens with 4.1 ... 16.4 mm focal length allows to remote view angle adjustment.

Included camera software enables management and integrated monitoring of many network cameras. IVS analysis - crossing the line (tripwire), intrusion, scene changing, abandoned/missing object, face detection, people counting.

PoE powering possibility, compatible with the 802.3at standard makes the device more universal and easier to install.



SPECIFICATION

Standard:	TCP/IP
Sensor:	1/1.8 " STARVIS™ CMOS
Matrix size:	6.3 Mpx
Resolution:	3072 x 2048 - 6.3 Mpx , 2560 x 1920 - 5.0 Mpx , 2048 x 1536 - 3.1 Mpx , 2304 x 1296 - 3.0 Mpx , 1920 x 1080 - 1080p , 1280 x 960 - 1.3 Mpx , 1280 x 720 - 720p
Lens:	4.1 ... 16.4 mm - Motozoom
View angle:	• 105 ° ... 34 ° (manufacturer data) • 100 ° ... 33 ° (our tests result)
Compression:	H.265+ / H.265 / H.264+ / H.264 / MJPEG
S/N ratio:	> 50 dB
Range of IR illumination:	50 m
Alarm inputs / outputs:	2 / 1
Bitrate:	• 24 ... 16384 kbps - H.264 • 14 ... 9984 kbps - H.265
Main stream frame rate:	25 fps @ 6.3 Mpx
Network interface:	100/1000 Base-T (RJ-45)
Default admin user / password:	admin / - The administrator password should be set at the first start

Network protocols:	HTTP, HTTPS, TCP, ARP, RTSP, RTP, UDP, SMTP, FTP, DHCP, DNS, DDNS, PPPoE, IPv4/IPv6, QoS, UPnP, NTP, Bonjour, 802.1x Radius, Multicast, ICMP, IGMP, SNMP, RTCP, TLS
Default IP address:	192.168.1.108
Audio:	<ul style="list-style-type: none"> • External microphone input • Audio output • Bi-directional audio streaming support • Audio detection
Web browser access ports:	80, 37777
PC client access ports:	37777
WEB Server:	Built-in, NVR compliance
Memory card slot:	Micro SD memory cards up to 128GB support (possible local recording)
Mobile client access ports:	37777
Max. number of on-line users:	20
Port ONVIF:	80
ONVIF:	16.12
RTSP URL:	rtsp://admin:haslo@192.168.1.108:554/cam/realmonitor?channel=1&subtype=0 - Main stream rtsp://admin:haslo@192.168.1.108:554/cam/realmonitor?channel=1&subtype=1 - Sub stream
Mobile phones support:	Port no.: 37777 or access by a cloud (P2P) <ul style="list-style-type: none"> • Android: Free application DMSS • iOS (iPhone): Free application DMSS
RS-485 interface:	—
Main features:	<ul style="list-style-type: none"> • D-WDR - Wide Dynamic Range, • 3D-DNR - Digital Noise Reduction, • ROI - improve the quality of selected parts of image • F-DNR (Defog) - Reduction of image noise caused by precipitation • EIS - Electronic Image Stabilization • ICR - Movable InfraRed filter • D-ZOOM - Digital Zoom • WB - White Balance (ATW/AWB/manual/indoor/outdoor) • BLC - configurable Back Light Compensation • HLC - High Light Compensation (spot) • Day/Night mode (color/b&w/auto) • Audio detection • Heat map - the selection in the image by corresponding colors the areas with different traffic • IVS analysis : crossing the line (tripwire), intrusion, abandoned/missing object, face detection, people counting • Motion Detection • Configurable Privacy Zones • Mirror - Mirror image • Sharpness - sharper image outlines • The device has a built-in heater
Power supply:	<ul style="list-style-type: none"> • PoE (802.3at), • 12 V DC / 1830 mA
Power consumption:	≤ 13 W
Housing:	Compact, Metal
Color:	White
Vandal-proof:	IK10
"Index of Protection":	IP67
Operation temp:	-40 °C ... 60 °C
Weight:	1.18 kg
Dimensions:	267 x 95 x 95 mm



Supported languages:	English, Bulgarian, Czech, Danish, Finnish, Greek, Polish, Hungarian, Swedish, Norwegian
Manufacturer / Brand:	DAHUA
Guarantee:	3 years

PRESENTATION



Side view:



Bottom view:

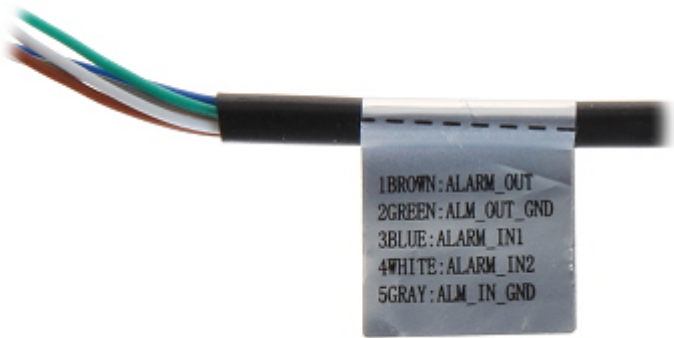


Camera connectors:

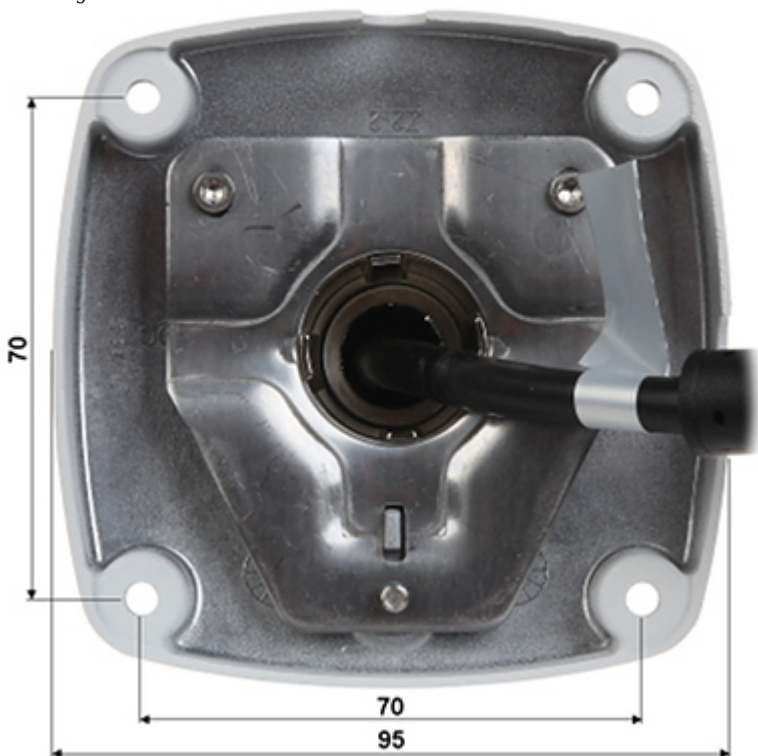
DELTA-OPTI Monika Matysiak; <https://www.delta.poznan.pl>
 POL; 60-713 Poznań; Graniczna 10
 e-mail: delta-opti@delta.poznan.pl; tel: +(48) 61 864 69 60



Connectors description:

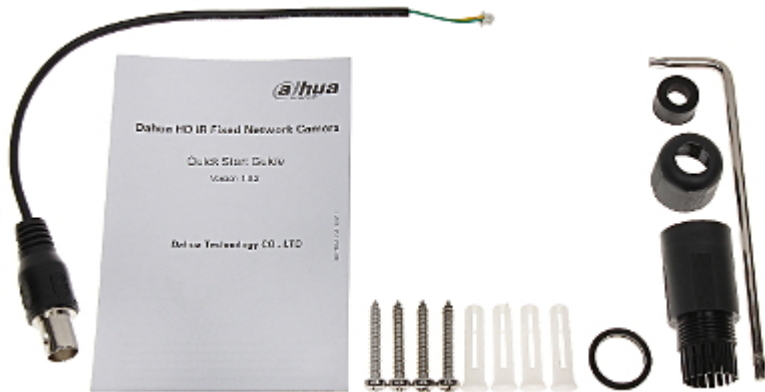


Mounting side view:

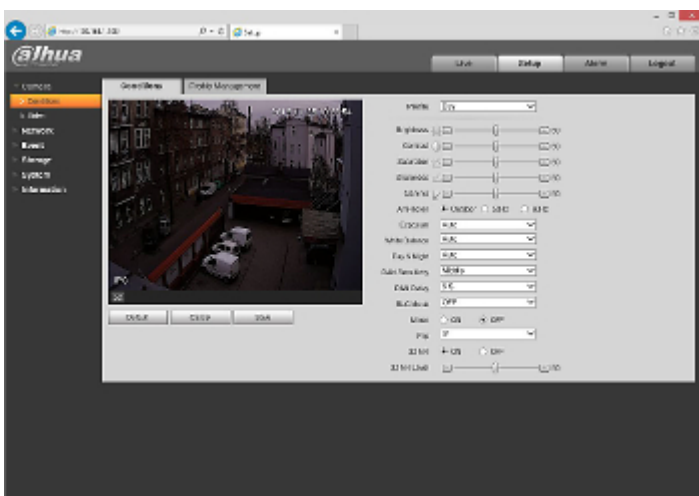


See how to initialize DAHUA cameras:

:
In the kit:

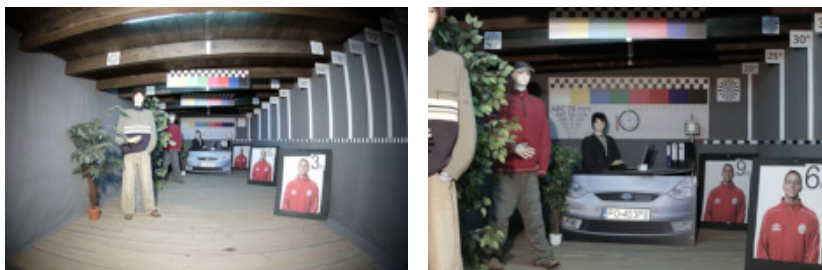


Example captures of device interface:



OUR TESTS

Camera image at artificial illumination (about 30Lux):



DELTA-OPTI Monika Matysiak; <https://www.delta.poznan.pl>
 POL; 60-713 Poznań; Graniczna 10
 e-mail: delta-opti@delta.poznan.pl; tel: +(48) 61 864 69 60

Camera image at night conditions with internal built-in IR illuminator on:



Camera image at direct strong light opposite to camera:



OUR OPINIONS



- o Motozoom lens.

PACKAGE

Dimensions (L x W x H): 0x0x0 mm	Gross Weight: 0 kg
----------------------------------	--------------------