

Code: IPC-HFW2831T-ZAS-27135-S2

IP VANDALPROOF CAMERA **IPC-HFW2831T-ZAS-27135-S2** - 8.3 Mpx 4K UHD 2.7 ... 13.5 mm - **MOTOZOOM** DAHUA

Net: **362.91 EUR** Gross: **446.38 EUR**

IP camera with efficient H.265 / H.264 image compression algorithm for clear and smooth video streaming at maximal resolution of 3840 x 2160 - 4K. Due to above it is perfect solution for surveillance systems requiring persons or vehicles recognition. The used motozoom lens with 2.7 ... 13.5 mm focal length allows to remote view angle adjustment.

The range of IR illumination according to the manufacturer data, depends on outer conditions (visibility - air transparency, environment, wall colors ie. scene reflectance).

PoE powering possibility, compatible with the 802.3af standard makes the device more universal and easier to install.



SPECIFICATION

| | |
|---------------------------|---|
| Standard: | TCP/IP |
| Sensor: | 1/2.7 " Progressive Scan CMOS |
| Matrix size: | 8.3 Mpx |
| Resolution: | 3840 x 2160 - 8.3 Mpx 4K UHD , 3072 x 2048 - 6 Mpx , 3072 x 1728 - 5 Mpx , 2688 x 1520 - 4 Mpx , 2048 x 1536 - 3 Mpx , 2304 x 1296 - 3 Mpx , 1920 x 1080 - 1080p 1280 x 960 - 1.3 Mpx 1280 x 720 - 720p |
| Lens: | 2.7 ... 13.5 mm - Motozoom |
| View angle: | <ul style="list-style-type: none">• 113 ° ... 31 ° (manufacturer data)• 106 ° ... 32 ° (our tests result) |
| Range of IR illumination: | 60 m |
| Memory card slot: | Micro SD memory cards up to 256GB support (possible local recording) |
| Image compression method: | H.265+ / H.265 / H.264+ / H.264H / MJPEG |
| Alarm inputs / outputs: | 1 / 1 |
| RS-485 interface: | — |
| Audio: | <ul style="list-style-type: none">• External microphone input• Audio output• Bi-directional audio streaming support |
| Network interface: | 10/100 Base-T (RJ-45) |

DELTA-OPTI Monika Matysiak; <https://www.delta.poznan.pl>
POL; 60-713 Poznań; Graniczna 10
e-mail: delta-opti@delta.poznan.pl; tel: +(48) 61 864 69 60

| | |
|--------------------------------|--|
| Network protocols: | IPv4/IPv6, HTTP, TCP, UDP, ARP, RTP, RTSP, RTCP, RTMP, SMTP, FTP SFTP DHCP DNS DDNS, QoS, UPnP, NTP, Multicast, ICMP, IGMP, NFS, PPPoE, Bonjour |
| WEB Server: | Built-in, Web Viewer |
| Max. number of on-line users: | 20 |
| ONVIF: | 19.12 |
| Main stream frame rate: | 15 fps @ 8.3 Mpx 25 fps @ 4 Mpx |
| Mobile phones support: | Port no.: 37777 or access by a cloud (P2P) • Android: Free application DMSS • iOS (iPhone): Free application DMSS |
| Default admin user / password: | admin / - The administrator password should be set at the first start |
| Default IP address: | 192.168.1.108 |
| Web browser access ports: | 80, 37777 |
| PC client access ports: | 37777 |
| Mobile client access ports: | 37777 |
| Port ONVIF: | 80 |
| RTSP URL: | rtsp://admin:haslo@192.168.1.108:554/cam/realmonitor?channel=1&subtype=0 - Main stream rtsp://admin:haslo@192.168.1.108:554/cam/realmonitor?channel=1&subtype=1 - Sub stream |
| Main features: | <ul style="list-style-type: none"> • Motozoom lens • WDR - 120 dB - Wide Dynamic Range • 3D-DNR - Digital Noise Reduction • ROI - improve the quality of selected parts of image • BLC - configurable Back Light Compensation • HLC - High Light Compensation (spot) • Day/night mode • ICR - Movable InfraRed filter • WB - White Balance (ATW/AWB/manual/indoor/outdoor) • AGC - Automatic Gain Control • Mirror - Mirror image • Sharpness - sharper image outlines • Configurable Privacy Zones • Motion Detection • IVS analysis : crossing the line (tripwire), intrusion |
| Power supply: | <ul style="list-style-type: none"> • PoE (802.3af), • 12 V DC / 830 mA |
| Power consumption: | ≤ 9.9 W |
| Housing: | Compact - Metal |
| Color: | White |
| Vandal-proof: | — |
| "Index of Protection": | IP67 |
| Operation temp: | -30 °C ... 60 °C |
| Weight: | 0.98 kg |
| Dimensions: | 244 x 90 x 90 mm |
| Supported languages: | Polish, English, Czech, French, Spanish, Dutch, German, Portuguese, Russian, Italian |
| Manufacturer / Brand: | DAHUA |
| Guarantee: | 3 years |

PRESENTATION



DELTA-OPTI Monika Matysiak; <https://www.delta.poznan.pl>
POL; 60-713 Poznań; Graniczna 10
e-mail: delta-opti@delta.poznan.pl; tel: +(48) 61 864 69 60



Side view:



Bottom view:



Camera connectors:



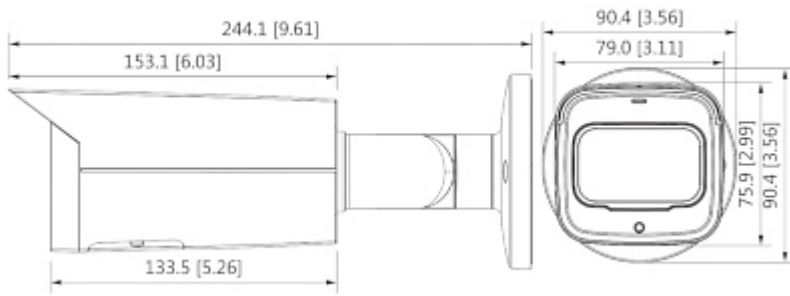
Connectors description:



Camera mounting side view:



Camera dimensions:



See how to initialize DAHUA cameras:

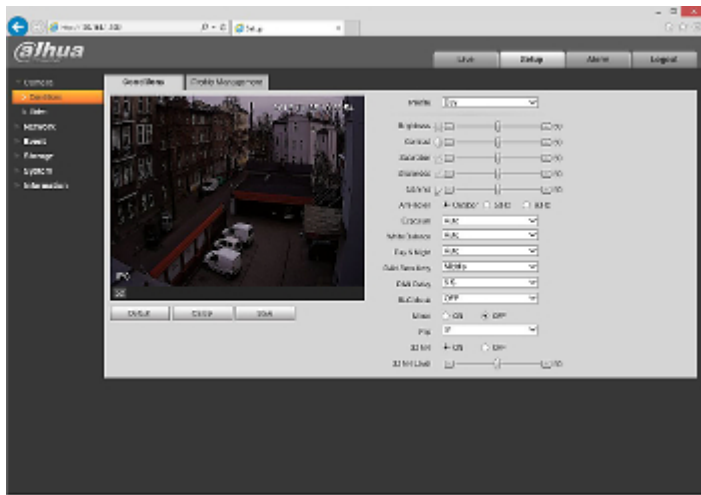
:

In the kit:



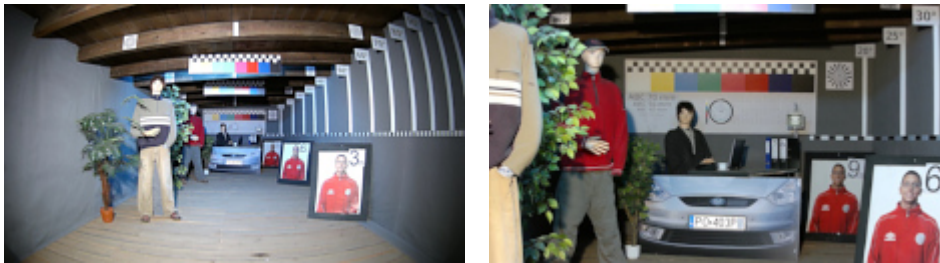
Example captures of device interface:





OUR TESTS

Camera image at artificial illumination (about 30Lux):



Camera image at night conditions with internal built-in IR illuminator on:



Camera image at direct strong light opposite to camera:



PACKAGE

| | |
|----------------------------------|--------------------|
| Dimensions (L x W x H): 0x0x0 mm | Gross Weight: 0 kg |
|----------------------------------|--------------------|

DELTA-OPTI Monika Matysiak; <https://www.delta.poznan.pl>
 POL; 60-713 Poznań; Graniczna 10
 e-mail: delta-opti@delta.poznan.pl; tel: +(48) 61 864 69 60