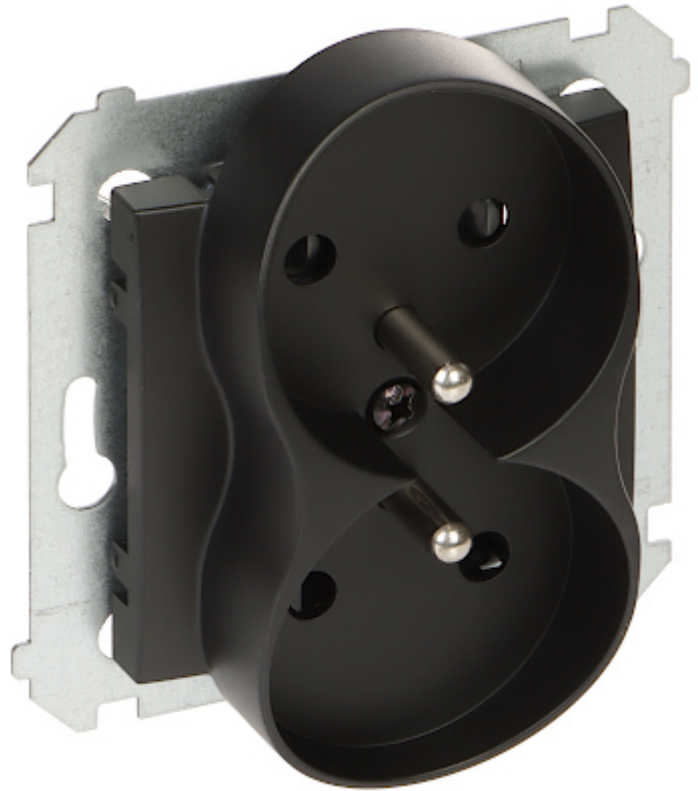


Code: DGZ2MZ.01/49-SIMON54

## DOUBLE SOCKET OUTLET **DGZ2MZ.01/49-SIMON54** 250 V 16 A

Net: **8.06 EUR** Gross: **8.06 EUR**



The DGZ2MZ.01/49-SIMON54 double socket outlet is designed to fix with frame plates of the Simon 54 Premium series.

### SPECIFICATION

Rated voltage:	250 V AC
Maximal current load:	16 A
Grounding:	✓
Cable terminals:	screw terminals
Socket type:	2 x CEE 7/5
Protection shutter:	✓
Application:	Flush-mounted, Simon 54 product series, for Premium frames
Assembly:	Claw or screw mounting
"Index of Protection":	IP20
Housing:	Non-halogen plastic, PC
Color:	Matt black
Weight:	0.078 kg
Dimensions:	<ul style="list-style-type: none"><li>• 81 x 75 x 46 mm</li><li>• 20 mm - mounting depth</li></ul>
Manufacturer / Brand:	KONTAKT Simon
Guarantee:	6 years

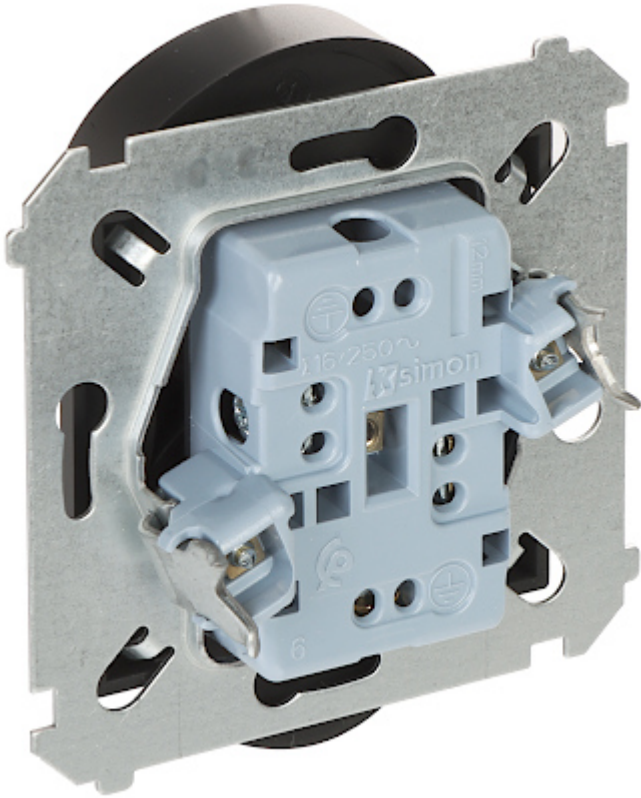
### PRESENTATION



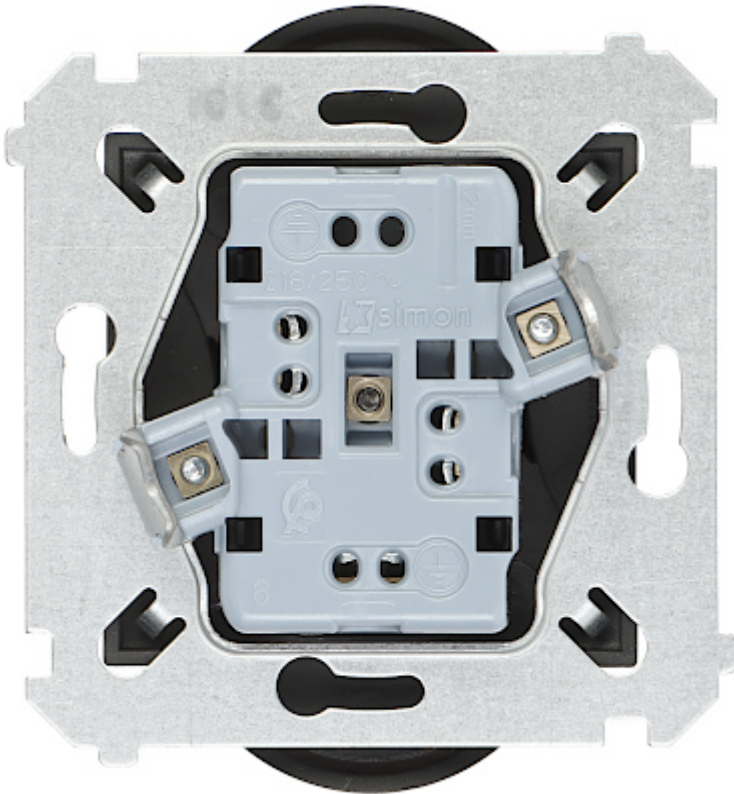
DELTA-OPTI Monika Matysiak; <https://www.delta.poznan.pl>  
POL; 60-713 Poznań; Graniczna 10  
e-mail: [delta-opti@delta.poznan.pl](mailto:delta-opti@delta.poznan.pl); tel: +(48) 61 864 69 60

Front view:

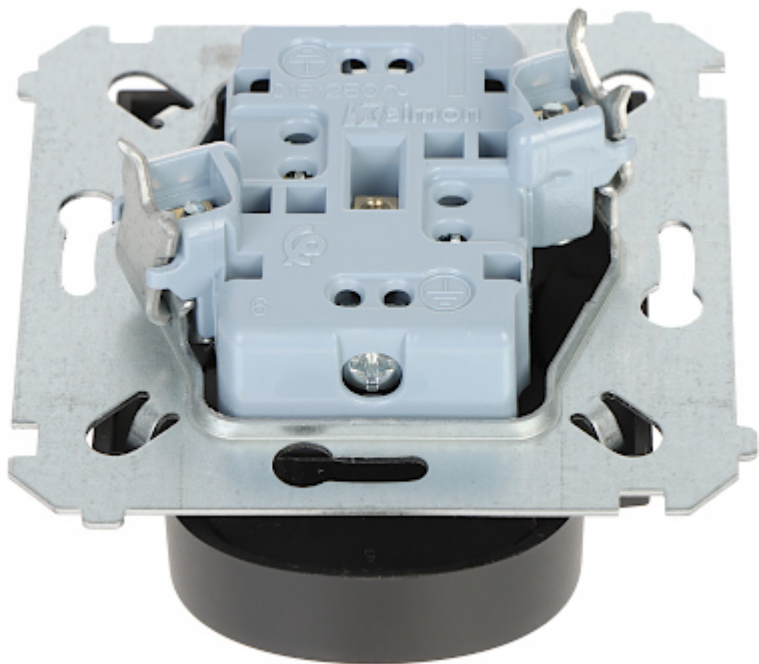




Rear view:



Connectors view:



#### PACKAGE

Dimensions (L x W x H): 0x0x0 mm	Gross Weight: 0 kg
----------------------------------	--------------------