

Code: LM24-A200

MONITOR VGA, HDMI **LM24-A200** 24 " DAHUA

Net: **130.28 EUR** Gross: **130.28 EUR**



SPECIFICATION

Screen size:	24 "
Native resolution:	1920 x 1080 px - Full HD
Aspect ratios:	16 : 9
Matrix type:	VA, LED backlight, Glossy matrix
Contrast:	3000 : 1 (typical)
Brightness:	220 cd/m ²
Viewable angles:	178 ° horizontal 178 ° vertical
Response time:	6.5 ms (typical)
Speakers built-in:	—
Signal connectors:	<ul style="list-style-type: none">• 1 x VGA,• 1 x HDMI• 1 x 2.1/5.5 mm socket, 12 V DC
Number of displayed colors:	16.7 M
Refresh frequency:	60 Hz, max. 75 Hz
HDCP:	✓
Housing type:	Plastic
Power management:	—
DLNA:	—
Monitor mounting standard:	VESA 100

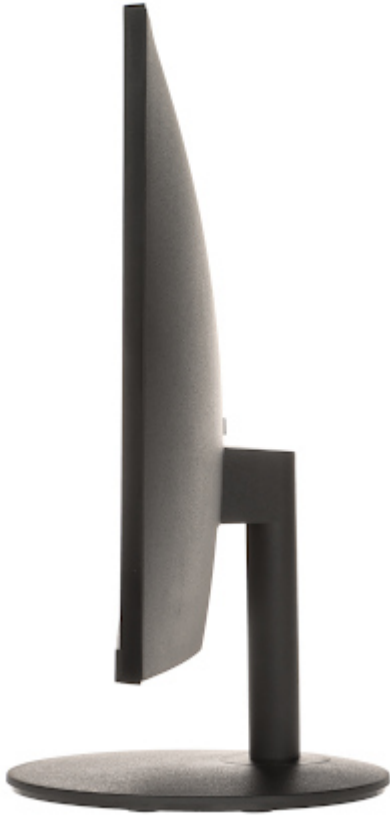
DELTA-OPTI Monika Matysiak; <https://www.delta.poznan.pl>
POL; 60-713 Poznań; Graniczna 10
e-mail: delta-opti@delta.poznan.pl; tel: +(48) 61 864 69 60

Robbery protection:	✓
Parameters adjustment:	OSD - by monitor control keys
Main features:	<ul style="list-style-type: none"> • The blue light reduction function, which is the most unhealthy for the eyes, limits its emission • Low current consumption • HDMI cable included
Power supply:	12 V DC / 2.5 A (power adapter included)
Power consumption:	<ul style="list-style-type: none"> ≤ 30 W (typical) ≤ 0.5 W (in standby mode)
Weight:	<ul style="list-style-type: none"> • 2.57 kg (with stand) • 2.23 kg (without stand)
Dimensions:	<ul style="list-style-type: none"> • 542 x 415 x 210 mm (with stand) • 542 x 321 x 55 mm (without stand)
Manufacturer / Brand:	DAHUA
Guarantee:	3 years

PRESENTATION



Side view:



Rear view:



Monitor connectors:

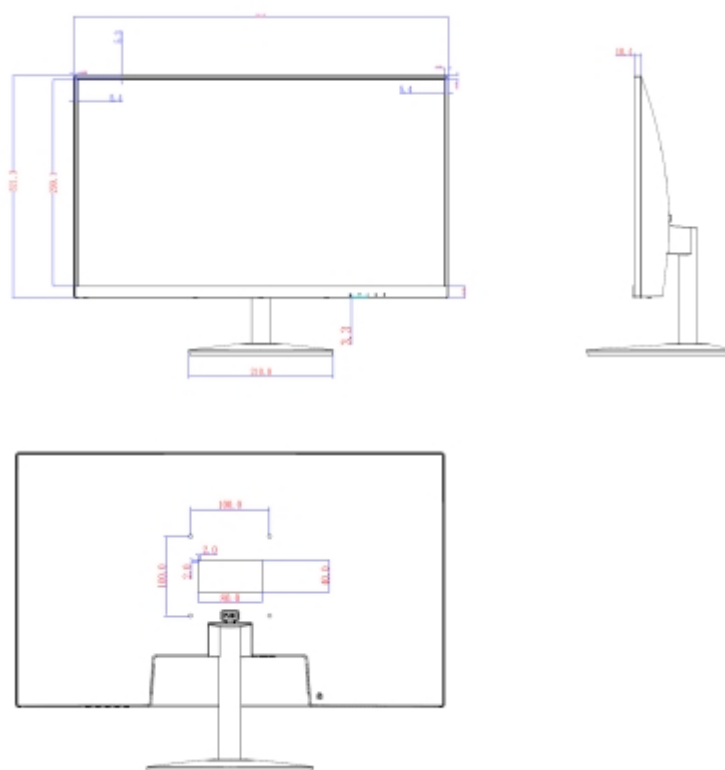




OSD menu control keys:



Dimensions:



In the kit:



DELTA-OPTI Monika Matysiak; <https://www.delta.poznan.pl>
POL; 60-713 Poznań; Graniczna 10
e-mail: delta-opti@delta.poznan.pl; tel: +(48) 61 864 69 60



PACKAGE

Dimensions (L x W x H): 0x0x0 mm	Gross Weight: 0 kg
----------------------------------	--------------------

