

Code: TF-001

## FILTER LTE TF-001

Net: 14.96 EUR Gross: 14.96 EUR

The TF-001 filter is used to suppress LTE signals that may cause interference in terrestrial TV installations.



### SPECIFICATION

Working frequency band:	5 ... 1000 MHz
Stop-band:	694 ... 1000 MHz
Return loss:	> 60 dB @ 733 MHz > 60 dB @ 1000 MHz
Insertion loss:	< 3 dB @ 5 ... 470 MHz < 3.5 dB @ 694 MHz
Main features:	<ul style="list-style-type: none"><li>• It is equipped with 24V/100mA DC pass</li><li>• Shielded</li><li>• F type connectors</li><li>• Mast mounting diameter</li></ul>
Weight:	0.17 kg
Dimensions:	89 x 107 x 43 mm
Guarantee:	2 years

### PRESENTATION

Internal view of the housing:

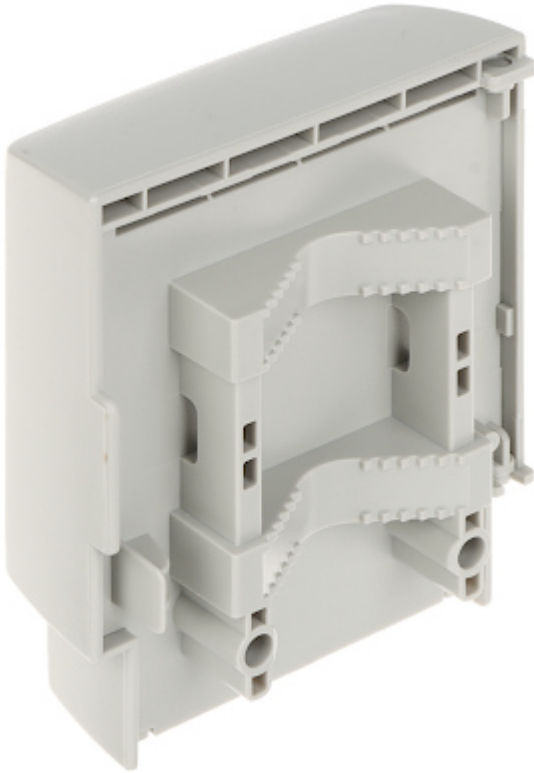


Housing:



Mast mounting diameter:





In the kit:



Filter frequency response:



## PACKAGE

Dimensions (L x W x H): 0x0x0 mm	Gross Weight: 0 kg
----------------------------------	--------------------



DELTA-OPTI Monika Matysiak; <https://www.delta.poznan.pl>  
 POL; 60-713 Poznań; Graniczna 10  
 e-mail: delta-opti@delta.poznan.pl; tel: +(48) 61 864 69 60