

Code: ZWR-210DC

MULTIPLEXER ZWR-210DC

Net: 7.78 EUR Gross: 9.57 EUR

Multiplexer is designed to receive the RTV local stations, also in DVB-T system. It enables auto connection of +12V power supply via cable to preamplifier mounted near the antenna.



SPECIFICATION

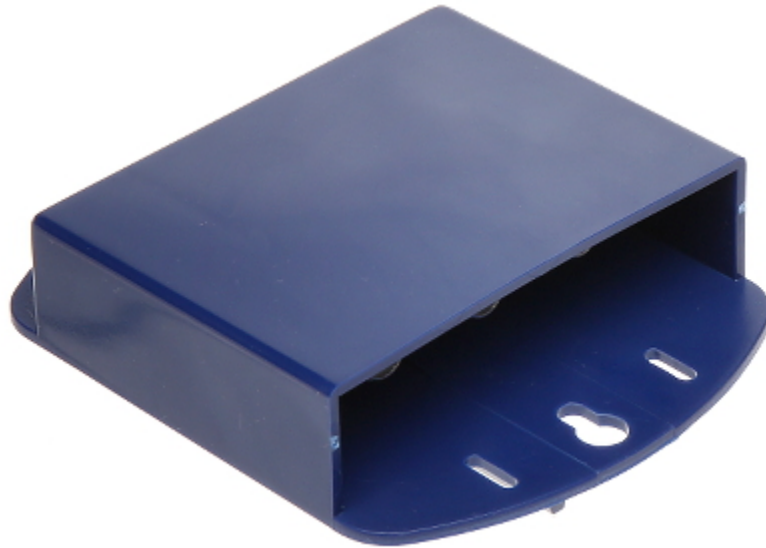
Input:	<ul style="list-style-type: none">• FM / VHF : 5 ... 230 MHz + DC - F socket,• UHF : 470 ... 790 MHz + DC - F socket
Impedance:	75 Ω
Insertion loss:	1 dB
DC-transition:	12 V / 100 mA
Main features:	It is possible to disable DC pass for each path using jumpers
Housing:	Metal / PET
Mount:	To the mast
Weight:	0.110 kg
Dimensions:	104 x 85 x 28 mm
Guarantee:	2 years

PRESENTATION

Top view:



DELTA-OPTI Monika Matysiak; <https://www.delta.poznan.pl>
POL; 60-713 Poznań; Graniczna 10
e-mail: delta-opti@delta.poznan.pl; tel: +(48) 61 864 69 60



In the kit:

