

Code: EXT-POE2H

EXTENDER **EXT-POE2H** IN A HERMETIC CASING PULSAR

Net: **279.00 PLN** Gross: **343.17 PLN**

The EXT-POE2H increases the range of Ethernet data and PoE power by another 100 meters. The output voltage is compatible with the input voltage.

The product meets the IP56 tightness class.

Attention! The device can not be used in Gigabit Ethernet networks, where all pairs of twisted-pair cable are used for data transmission.



SPECIFICATION

Standards:	PoE : IEEE 802.3at, IEEE 802.3af
Input voltage:	42 ... 57 V DC
Output voltage:	42 ... 57 V DC
Number of inputs:	1
Number of outputs:	2
Connector:	3 x RJ-45 socket
LED indicators:	LAN, PoE
Supported data rates:	<ul style="list-style-type: none">• Range : 100 m - Input, 100 m - 2 x Output,• Supported data rates 10 / 100 Mbps - Fast Ethernet
Output power:	15.4 W / Port PoE OUT 1/2 , max. 20 W (total)
Protections:	<ul style="list-style-type: none">• Overvoltage• Overload• Short-circuit
Housing:	Plastic, hermetic
"Index of Protection":	IP56
Operation temp. / Relative humidity:	-10 ... 40 °C / 10 ... 90 %
Weight:	0.55 kg
Dimensions:	198 x 148 x 78 mm
Manufacturer / Brand:	PULSAR
Guarantee:	2 years

DELTA-OPTI Monika Matysiak; <https://www.delta.poznan.pl>
POL; 60-713 Poznań; Graniczna 10
e-mail: delta-opti@delta.poznan.pl; tel: +(48) 61 864 69 60

PRESENTATION

Internal view of the housing:



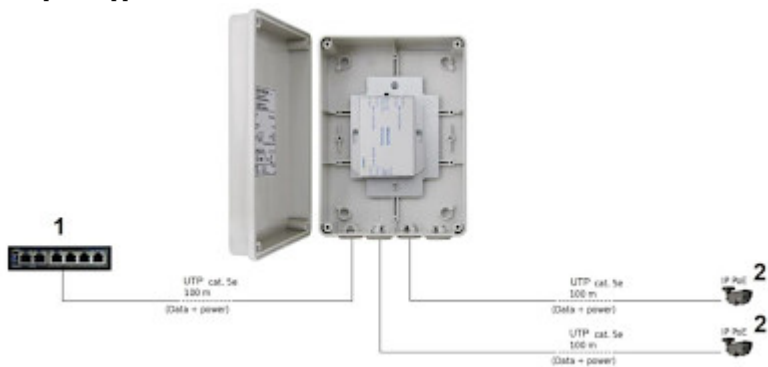
Bottom view:



Connectors:



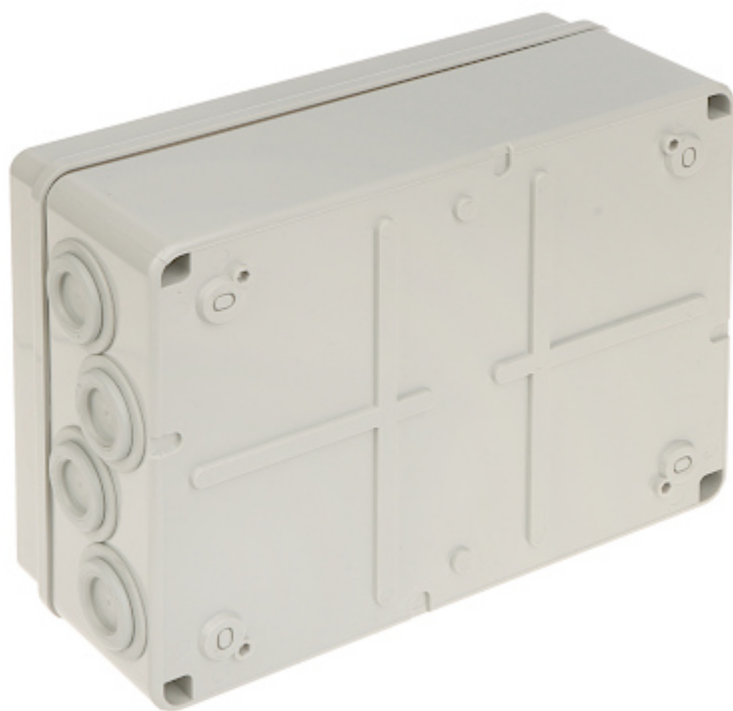
Example of application:



- 1. Switch PoE
- 2. IP Camera

DELTA-OPTI Monika Matysiak; <https://www.delta.poznan.pl>
 POL; 60-713 Poznań; Graniczna 10
 e-mail: delta-opti@delta.poznan.pl; tel: +(48) 61 864 69 60

Mounting side view:



In the kit:



PACKAGE

Dimensions (L x W x H): 0x0x0 mm	Gross Weight: 0 kg
----------------------------------	--------------------