

Code: LSA-GN-10/3

KRONE BACK-MOUNT FRAME LSA-GN-10/3

Net: 1.86 EUR Gross: 1.86 EUR

Back-mount frame is otherwise U-shaped panels of telecommunication connectors. Made from stainless steel. It is equipped with special shaped handles to mount (push-in) 3 different types profile modules of telecommunication connectors.

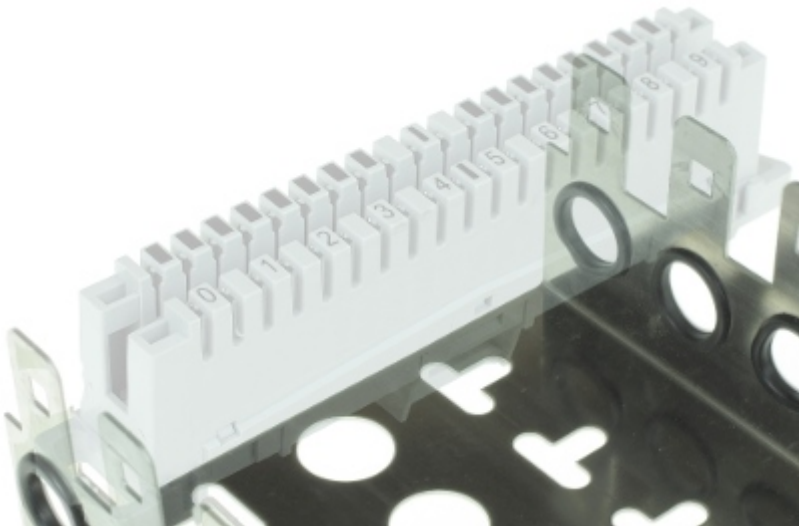


SPECIFICATION

Number of mounted profile modules:	3 pcs
Type of mounted profile modules:	10PAR
Dimensions:	67 x 112 x 50 mm
Guarantee:	2 years

PRESENTATION

Example of use with LSA-ZL/10 profile module:



Twisted-pair cable mounting using a KRONE impact tool (ZAC/LSA-P):

PACKAGE

Dimensions (L x W x H): 0x0x0 mm	Gross Weight: 0 kg
----------------------------------	--------------------

DELTA-OPTI Monika Matysiak; <https://www.delta.poznan.pl>
POL; 60-713 Poznań; Graniczna 10
e-mail: delta-opti@delta.poznan.pl; tel: +(48) 61 864 69 60