

Code: MB-3/PLUS

BALLAST MAST BASE **MB-3/PLUS**

Net: **191.01 EUR** Gross: **234.94 EUR**

The MB-3/PLUS ballast mast base is perfect to use when there is a need to install the devices on the mast for a specified time (construction works, advertising campaign, festival, etc.). We can instantly without damaging the walls or the ground in a solid way fix the elements on the mast, and next just as quickly all elements disassembled.

To load the base, use concrete blocks of dimensions 380 x 240 x 120 mm and weight min. 24 kg in the dry state.

ATTENTION! The kit does not include the M6 blocks neither mast, which is selected depending on needs from one-element masts up to 50 mm diameter.

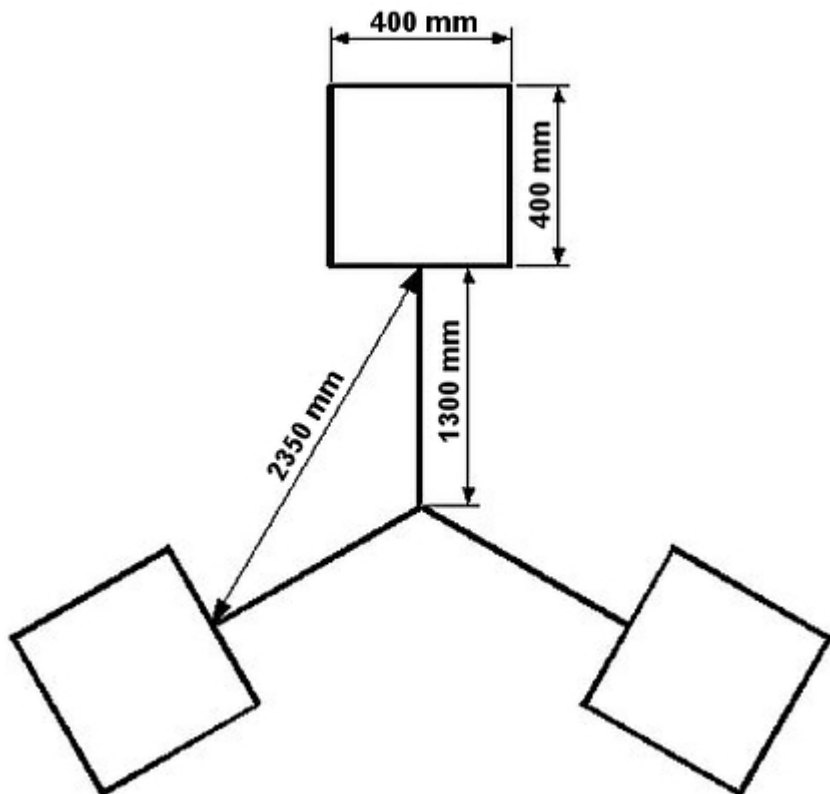


SPECIFICATION

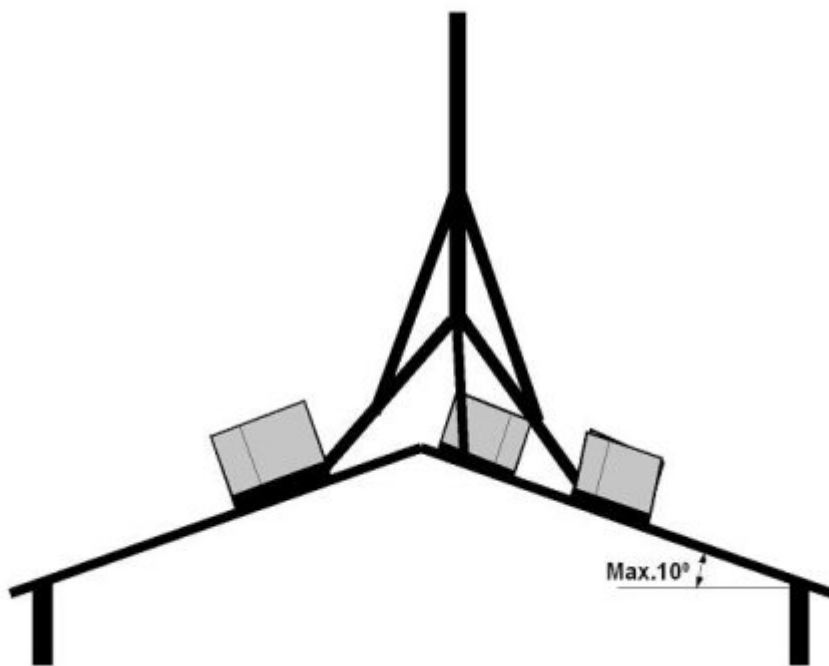
Height of the mast:	max. 3 m (not included)
Mast diameter:	max. Ø 60 mm
Material:	Steel galvanized - Hot-dip galvanized
Manufacturer / Brand:	DELTA
Main features:	<ul style="list-style-type: none">• External dimensions of the whole base : 2260 x 2260 mm• Whole element is hot-dip galvanized• It is perfect to mount antennas : Satellite, WLAN, DVB-T
Weight:	28.3 kg
Internal dimensions of the base:	3 x (390 x 390) mm
Guarantee:	3 years

PRESENTATION

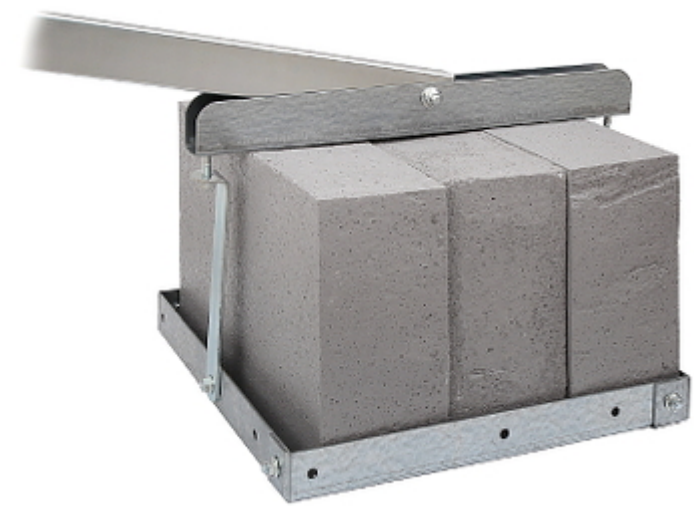
DELTA-OPTI Monika Matysiak; <https://www.delta.poznan.pl>
POL; 60-713 Poznań; Graniczna 10
e-mail: delta-opti@delta.poznan.pl; tel: +(48) 61 864 69 60



The base can be placed even on a sloping roof:



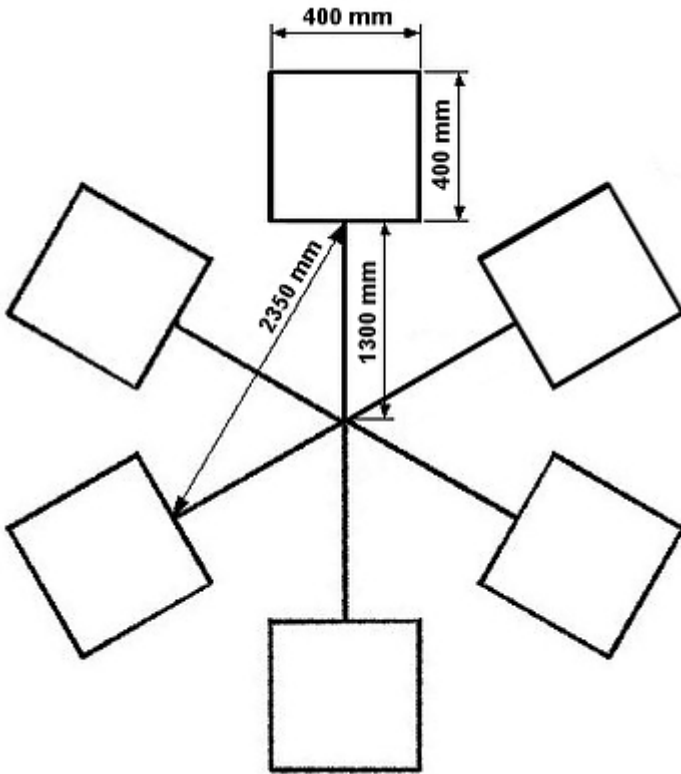
Particular elements:







Note! If you buy two pieces of the MB-3 Plus mast bases - you can connect them together to get six-arm support:





OUR OPINIONS



- The area for mast assembling does not have to be flat.
- At each support you should adjust its height and inclination.
- Whole element is hot-dip galvanized.