

Code: SD-515

TV/SAT SPLITTER SD-515

Net: 44.80 EUR Gross: 44.80 EUR

The SD-515 splitter is used in multiswitch systems to distribute a signal from multiswitch bus. Additionally, the splitter also distributes terrestrial TV signals. The splitter is equipped with DC-transition switch that in "ON" position passes DC voltage through "H" paths to both branches. In "OFF" position it runs voltage to one path only.

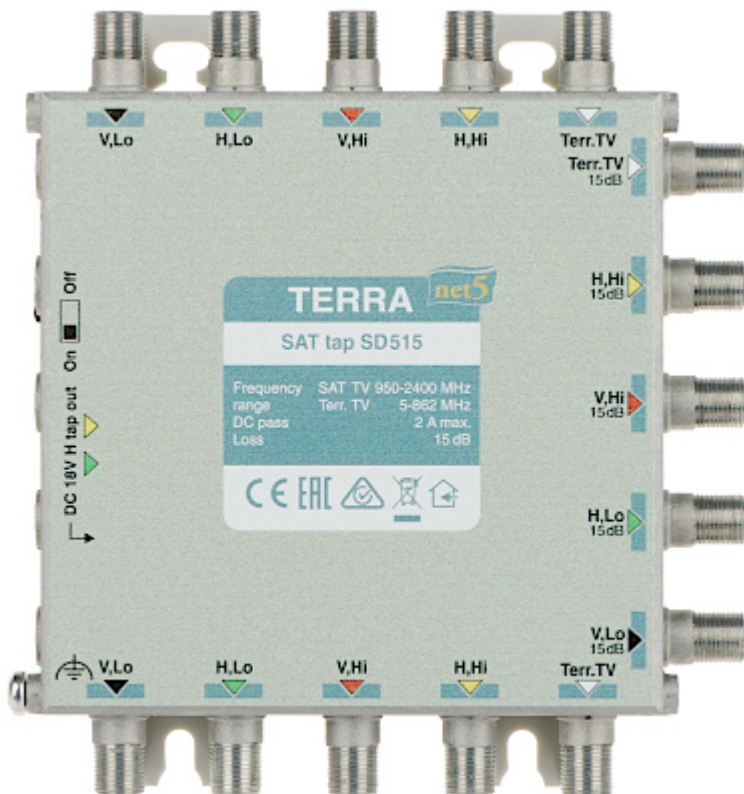


SPECIFICATION

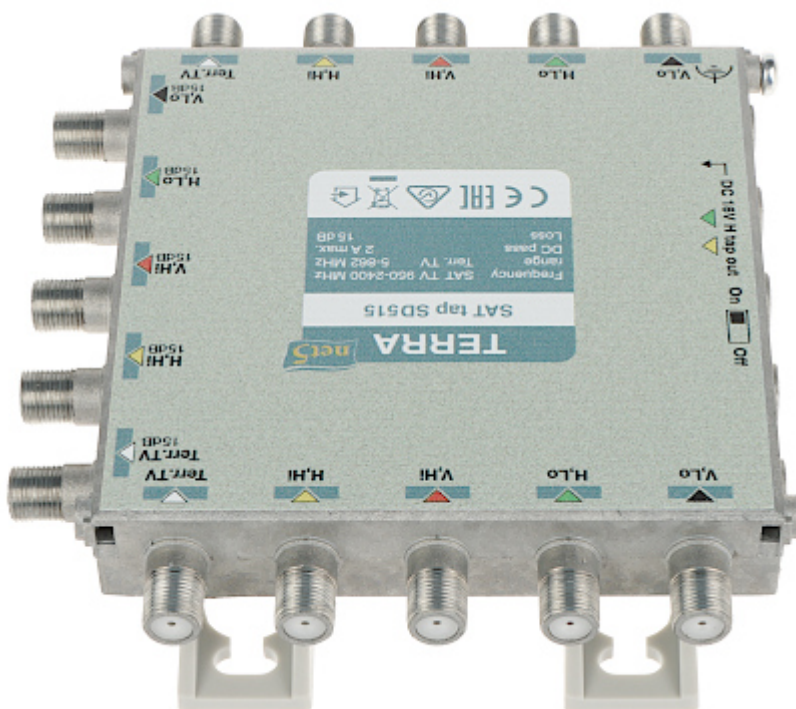
Frequency range:	950 ... 2400 MHz - SAT, 5 ... 862 MHz - TV
Connection loss:	15 ... 16 dB - SAT, 13 ... 17 dB - TV
Isolation between outputs:	> 30 dB
DC-transition:	max. 2 A
Operation temp:	-20 °C ... 50 °C
Weight:	0.4 kg
Dimensions:	126 x 135 x 30 mm
Guarantee:	2 years

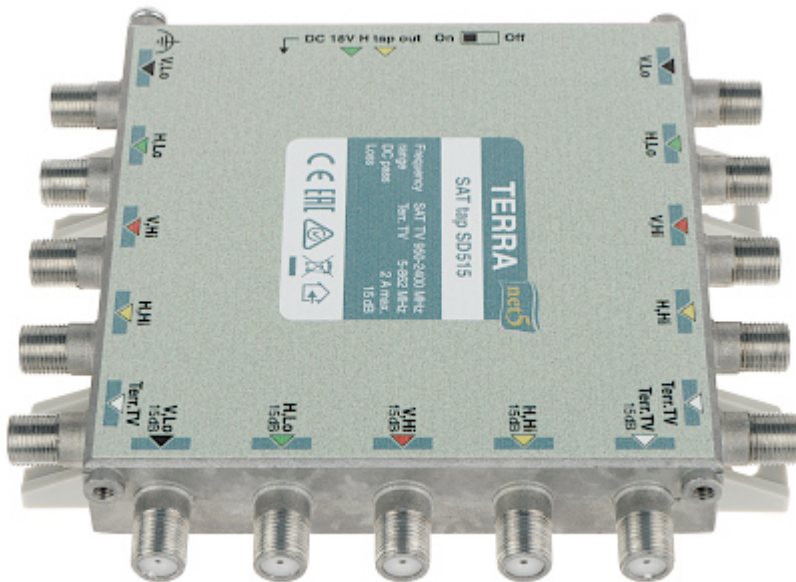
PRESENTATION

Top view:



Connectors:

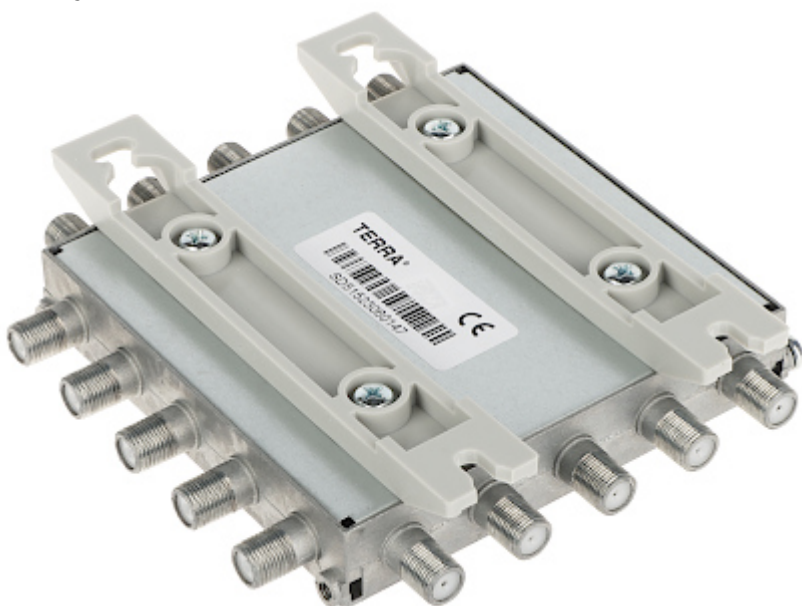




Side view:



Mounting side view:



PACKAGE

Dimensions (L x W x H): 0x0x0 mm	Gross Weight: 0 kg
----------------------------------	--------------------