

Code: DS-1.25G-20-1310

## SINGLE-MODE MODULE **DS-1.25G-20-1310** Hikvision

Net: **28.28 EUR** Gross: **34.78 EUR**

Optical modules complying with SFP (Small Form-factor Pluggable) standard are devices converting electrical signal to the optical form and optical signal to the electrical form. Usage media converters with the ability to exchange SFP modules is particularly preferred because of its versatility, for example if you change the network configuration rather than replace the entire unit or add new media converters simply select the appropriate SFP module. Modules complying with most of switches and routers with SFP socket.

Attention! The DS-1.25G-20-1310 requires to cooperation the DS-1.25G-20-1550.

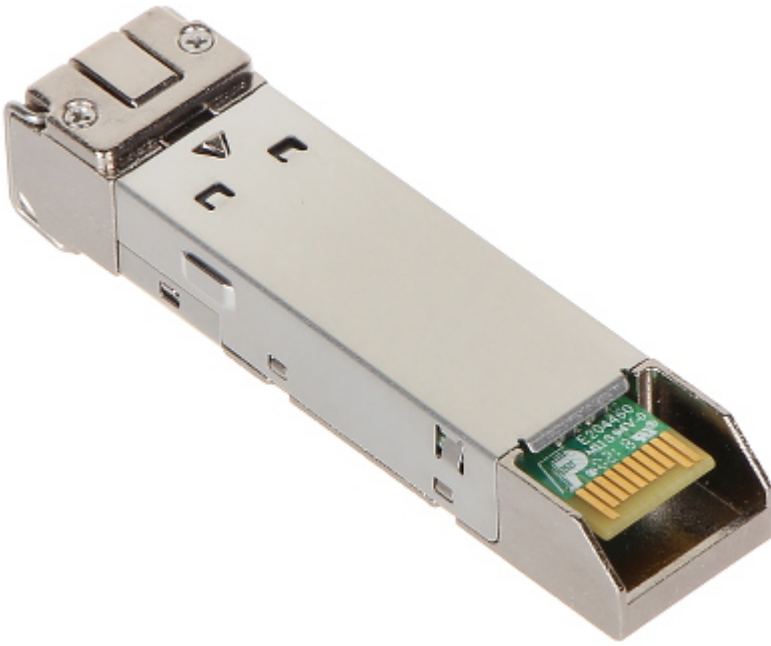


### SPECIFICATION

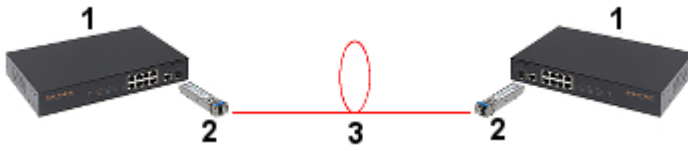
Transmission protocols:	IEEE 802.3z 1000Base-FX
Fiber type:	Single-mode fiber
Maximal transmission range:	20 km
Transfer rate:	max. 1.25 Gb/s
Number of used fibers:	1
Optical connectors:	LC
Light source / optical wavelength:	Laser FP - 1310 / 1550 nm (Tx / Rx)
Main features:	Wavelength-Division Multiplexing technology WDM (Tx 1310nm / Rx 1550nm)
Power supply:	3.3 V DC
Operation temp:	0 °C ... 70 °C
Weight:	0.02 kg
Manufacturer / Brand:	Hikvision
SAP Code:	307400045
Guarantee:	<b>3 years</b>

### PRESENTATION

DELTA-OPTI Monika Matysiak; <https://www.delta.poznan.pl>  
POL; 60-713 Poznań; Graniczna 10  
e-mail: [delta-opti@delta.poznan.pl](mailto:delta-opti@delta.poznan.pl); tel: +(48) 61 864 69 60



Connection diagram:



1. switch with SFP socket
2. SFP module
3. Fiber optic transmission (max. 20 km)

