

Code: GTS-SFP-35G

SINGLE-MODE MODULE **GTS-SFP-35G**

Net: **10.82 EUR** Gross: **10.82 EUR**



Optical modules complying with SFP (Small Form-factor Pluggable) standard are devices converting electrical signal to the optical form and optical signal to the electrical form. Usage media converters with the ability to exchange SFP modules is particularly preferred because of its versatility, for example if you change the network configuration rather than replace the entire unit or add new media converters simply select the appropriate SFP module. Modules complying with most of switches and routers with SFP socket.

Attention! The GTS-SFP-35G requires to cooperation the GTS-SFP-53G.

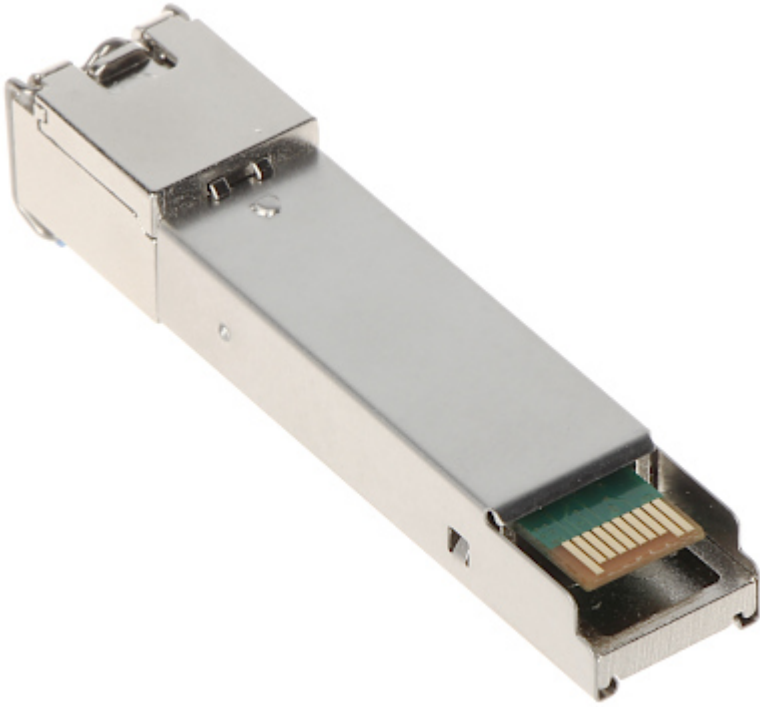
SPECIFICATION

Transmission protocols:	IEEE 802.3z 1000Base-FX
Fiber type:	8.3/125 μm , 8.7/125 μm , 9/125 μm , 10/125 μm - Single-mode fiber
Maximal transmission range:	20 km
Transfer rate:	max. 1.25 Gb/s
Number of used fibers:	1
Optical connectors:	SC / PC
Light source / optical wavelength:	Laser FP - 1310 / 1550 nm (Tx / Rx)
Main features:	Wavelength-Division Multiplexing technology WDM (Tx 1310nm / Rx 1550nm)
Transmitter power:	-8 ... -3 dB
Receiver sensitivity:	≥ -22 dB
Power supply:	3.3 V DC
Operation temp:	0 $^{\circ}\text{C}$... 70 $^{\circ}\text{C}$
Weight:	0.024 kg
Guarantee:	2 years

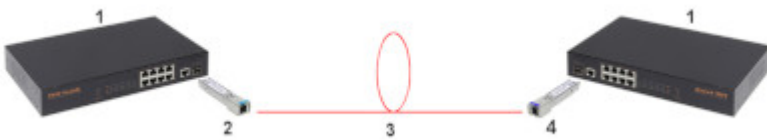
PRESENTATION



DELTA-OPTI Monika Matysiak; <https://www.delta.poznan.pl>
POL; 60-713 Poznań; Graniczna 10
e-mail: delta-opti@delta.poznan.pl; tel: +(48) 61 864 69 60



Connection diagram:



1. switch with SFP socket
2. GTS-SFP-53G module
3. Fiber optic transmission (max. 20 km)
4. GTS-SFP-35G module

PACKAGE

Dimensions (L x W x H): 0x0x0 mm	Gross Weight: 0 kg
----------------------------------	--------------------

