

Code: FAST-MS1\*P5

## MECHANICAL SPLICE FAST-MS1\*P5

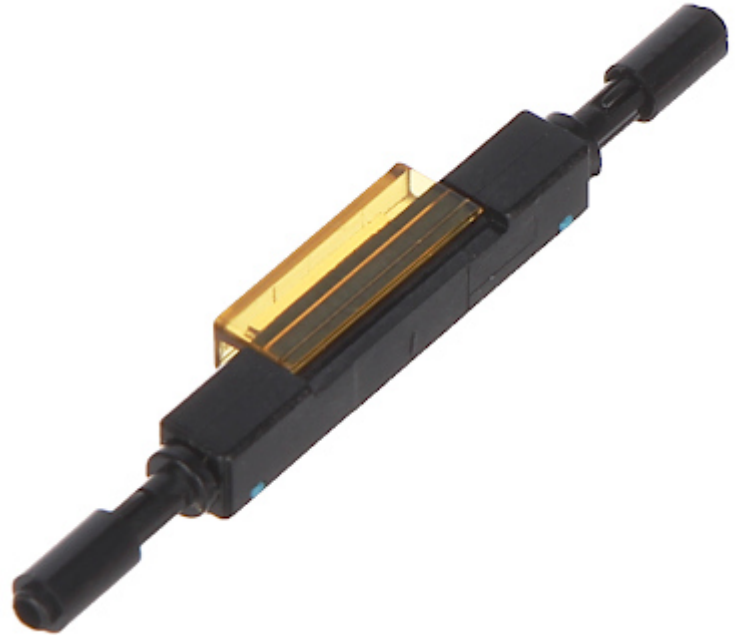
Net: 7.14 EUR Gross: 8.78 EUR

The FAST-MS1 mechanical splices are used for permanent connections of optical fibers without the need of employing fusion splicers. Low loss at the level of 0.1 dB is obtained thanks to advanced positioning of the fiber end faces by V-shaped grooves.

The optical gel that is also used in the mechanical splice reduces the effects of imprecise cuts and a possible gap between the end faces. The versatile design is used for splicing optical fibers with buffer coating diameters of 250  $\mu\text{m}$  and 900  $\mu\text{m}$ , providing high performance connections of multimode and single-mode fibers.

Mechanical splices are suitable for connecting optical lines in similar cases like fusion splices, e.g. to connect pigtails in distribution boxes, repair damaged optical cables.

It is sold in 5 pcs packages.



### SPECIFICATION

<b>In package:</b>	<b>5 pcs The price for package</b>
Fiber type:	Multi-mode and single-mode
Fiber diameter:	125 $\mu\text{m}$
Cable diameter:	250 $\mu\text{m}$ / 900 $\mu\text{m}$
IL:	0.1 dB/km (for 1310 and 1550 nm)
RL:	< -40 dB
Connector insertion loss:	0.1 dB
Splice reuse:	max. 5 times
Operation temp:	-40 $^{\circ}\text{C}$ ... 75 $^{\circ}\text{C}$
Guarantee:	2 years

### PRESENTATION

5 pieces included in the package:

DELTA-OPTI Monika Matysiak; <https://www.delta.poznan.pl>  
POL; 60-713 Poznań; Graniczna 10  
e-mail: [delta-opti@delta.poznan.pl](mailto:delta-opti@delta.poznan.pl); tel: +(48) 61 864 69 60



In the kit:



Package:



Watch how to connect the fibers using this mechanical splice:

:

## PACKAGE

DELTA-OPTI Monika Matysiak; <https://www.delta.poznan.pl>  
POL; 60-713 Poznań; Graniczna 10  
e-mail: delta-opti@delta.poznan.pl; tel: +(48) 61 864 69 60

Dimensions (L x W x H): 0x0x0 mm	Gross Weight: 0 kg
----------------------------------	--------------------

