

Code: OR-NL-348BLPPR4

LED FLOODLIGHT WITH MOTION SENSOR **OR-NL-348BLPPR4** ORNO

Net: **44.75 EUR** Gross: **55.04 EUR**

Illuminator can be used indoors and outdoors. Incomparably greater lifetime of the LEDs compared to traditional halogen bulb provides cheap and reliable operation.

The built-in twilight sensor prevents the lamp from being turned on in daylight. The PIR detector allows you to automatically switch on the lighting only in the presence of people, which translates into both increased lifetime of LEDs and minimized electricity consumption.

The use of multiple LEDs provides a better heat dissipation, and the longer lifetime of the reflector and allows for uniform light output.



SPECIFICATION

Luminous flux:	1500 lm
Light color:	Neutral, 4000 K
Twilight switch:	✓
Power supply:	230 V AC
Nominal power:	25 W
CRI:	> 85
Main features:	<ul style="list-style-type: none">• 10 x LED SMD diodes• LED lifetime 50 000 h• Solid workmanship• PIR detector - Built-in, Range : 12 m, Detection angle : 180 °, Motion Detection : 0.6 ... 1.5 m/s• Sensitivity adjustment of the twilight sensor• Lighting time adjustment : 10 ... 420 s• Tilt adjustment- Twilight Sensor : 180 ° (horizontal), 90 ° (vertical)- LED Floodlight : 45 ° (horizontal), 135 ° (vertical)
Housing:	Aluminum / Plastic (polycarbonate)
"Index of Protection":	IP44
Operation temp:	-20 °C ... 40 °C
Weight:	1.22 kg
Dimensions:	180 x 208 x 178 mm
Manufacturer / Brand:	ORNO

DELTA-OPTI Monika Matysiak; <https://www.delta.poznan.pl>
POL; 60-713 Poznań; Graniczna 10
e-mail: delta-opti@delta.poznan.pl; tel: +(48) 61 864 69 60

Guarantee:

2 years

PRESENTATION

Front view:



Rear view:



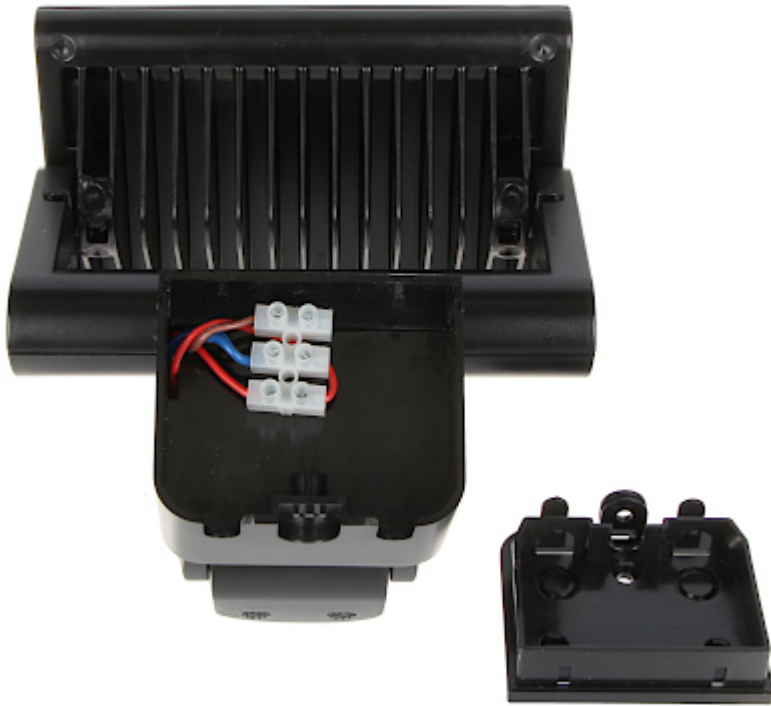
Potentiometers to adjust the lighting time and twilight sensor sensitivity:



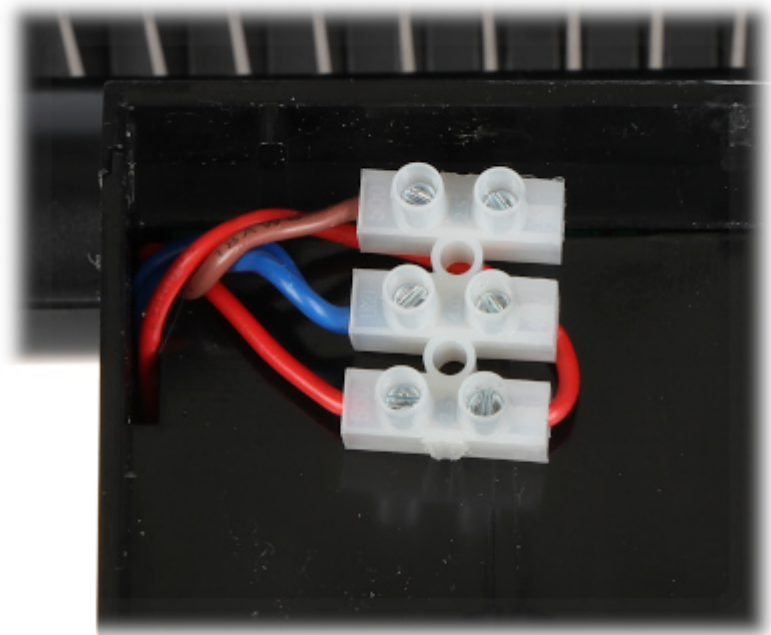
Possibility of mount adjustment:



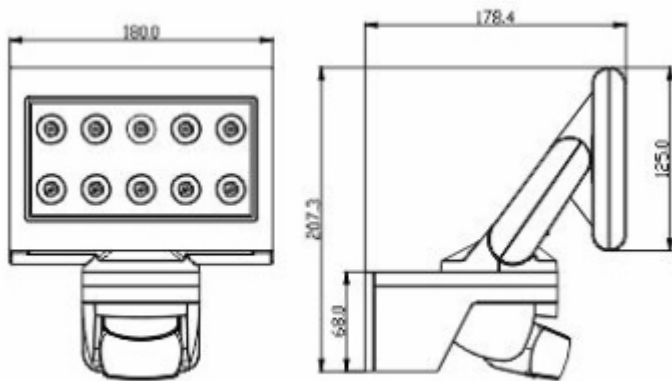
Internal view of the housing:



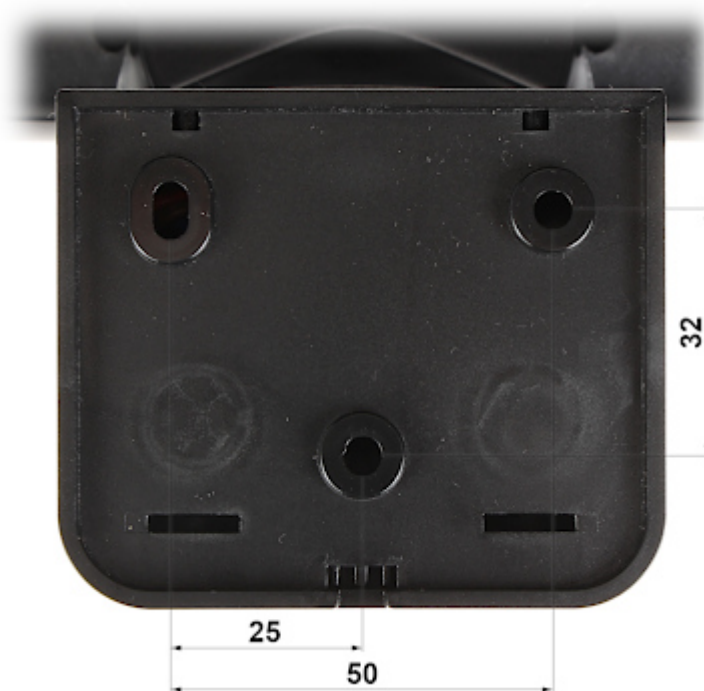
Connectors:



Dimensions:



Mounting dimensions:



In the kit:

