

Code: RD-8

MODBUS DIGITAL OUTPUT MODULE **RD-8**

Net: **19.47 EUR** Gross: **23.95 EUR**



The Modbus RD-8 digital output module has 8 transistor outputs.

The outputs can take two states: ground potential or power input potential. The maximum load of a single output is 2A. The device is controlled by the Modbus RTU protocol over the RS-485 bus. The free application allows you to control up to 4 modules.

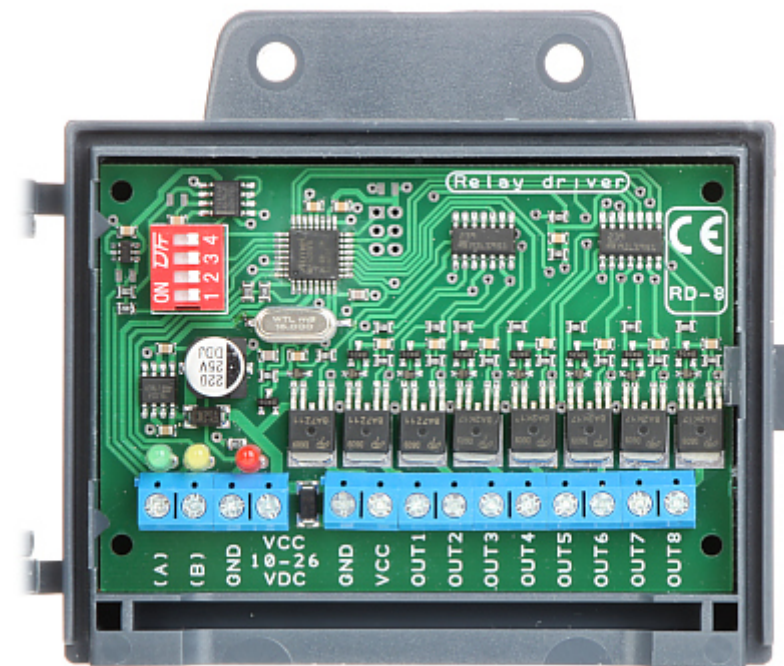
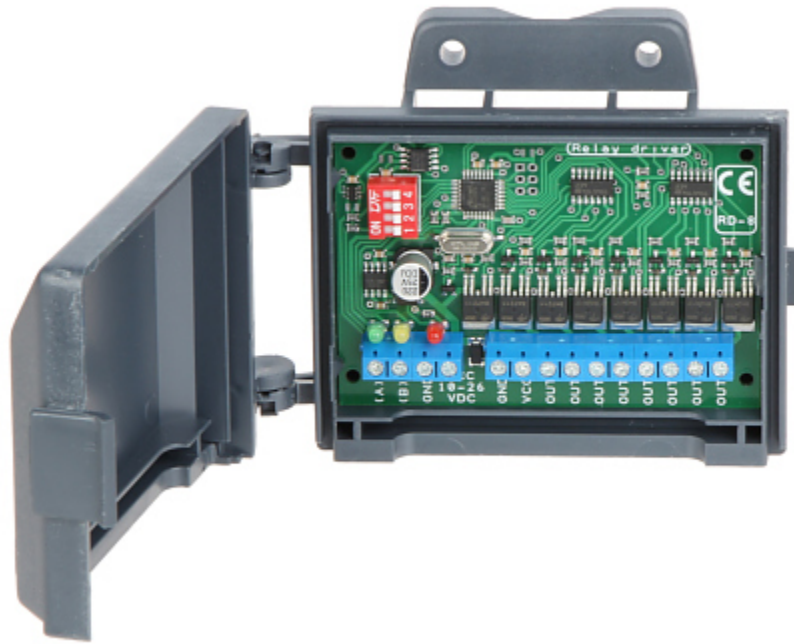
SPECIFICATION

PTZ control:	RS-485
Protocol:	MODBUS
Transmission speed:	115200 b/s
Outputs:	8 pcs
Current efficiency:	<ul style="list-style-type: none">• 2 A (single output),• 8 A (total)
Inputs protection:	✓
Power supply:	7 V ... 26 V DC (power adapter not included)
Current consumption:	60 mA @ 12 V DC
Weight:	0.09 kg
Dimensions:	120 x 90 x 36 mm
Manufacturer / Brand:	DELTA
Guarantee:	2 years

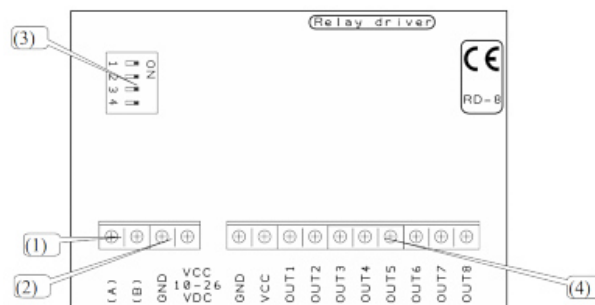
PRESENTATION

DELTA-OPTI Monika Matysiak; <https://www.delta.poznan.pl>
POL; 60-713 Poznań; Graniczna 10
e-mail: delta-opti@delta.poznan.pl; tel: +(48) 61 864 69 60

Internal view of the housing:

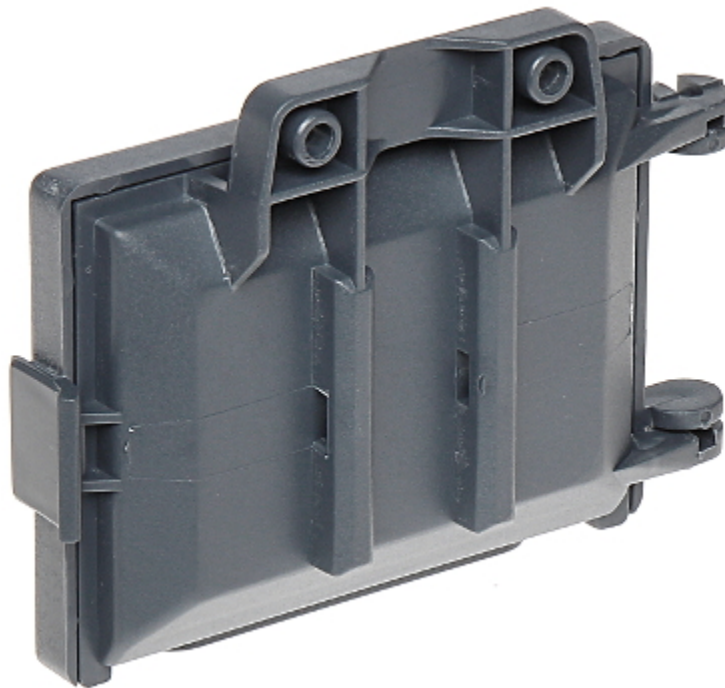


Connectors description:



1. RS-485
2. Power supply
3. ID address configuration
4. Outputs

Rear view:



Dimensions:

