

Code: ACTIVA-5

INFRA-RED BARRIERS SATEL **ACTIVA-5** 5 BEAMS SATEL

Net: **162.14 EUR** Gross: **199.43 EUR**



The alarm systems based on Passive Infra-Red detectors catch the intruder, which is inside the room already. The system based on Infra-Red barriers is intended to cause an alarm when intruder only intends to invade the premises, and there is still outside the building.

The curtain is composed of several active IR barriers (beams detectors), which create an invisible "grill" inside the window or door bay. Tampering with this "grill" area causes an immediate start alarm.

IR curtains can be also used to protect the controlled crossing, gates, fences, precious objects at open areas, etc. In museums the IR curtains can be successfully used as conflict-free, discreet separation the viewers from the valuable exhibits.

SPECIFICATION

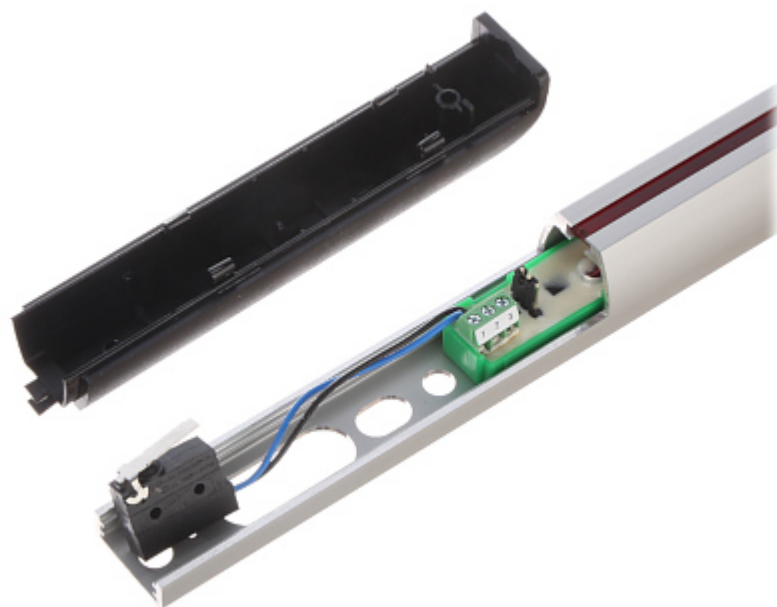
Number of beams:	5
Detection method:	Programmable number of beams, which interruption trigger an alarm
Outdoor detection range:	10 m
Indoor detection range:	20 m
Beam characteristics:	Transmission encoding
Interruption time (blocking of the beam):	40 ... 1000 ms
Alarm period:	2 s
Tamper contact:	NC
Assembly:	Possibility to mount to the wall
Power supply:	12 V DC
Current consumption:	max. 50 mA
Angles adjustment range:	—
"Index of Protection":	IP44
Operation temp. / Relative humidity:	-25 °C ... 55 °C / max. 95 %
Main features:	<ul style="list-style-type: none">• trimmer sensitivity adjustment• The RS-232 port which enables programming via computer with ACTIVA software installed
Color:	Black + Silver

DELTA-OPTI Monika Matysiak; <https://www.delta.poznan.pl>
POL; 60-713 Poznań; Graniczna 10
e-mail: delta-opti@delta.poznan.pl; tel: +(48) 61 864 69 60

Transmitter or receiver dimensions:	1315 x 25 x 26 mm
Transmitter and receiver weight:	0.62 kg
Manufacturer / Brand:	SATEL
Guarantee:	2 years

PRESENTATION

View after open the front cover:





In the kit:



PACKAGE

Dimensions (L x W x H): 0x0x0 mm	Gross Weight: 0 kg
----------------------------------	--------------------