

Code: TPC-BF2120-1F4

IP HYBRID THERMAL IMAGING CAMERA **TPC-BF2120-1F4** 1.0 mm - 1.3 Mpx, 4 mm - 1080p DAHUA Net: 4 876.00 PLN Gross: 5 997.48 PLN

The TPC-BF2120-1F4 Thermal Imaging Camera is a modern solution that allows to detect the presence of people, animals and vehicles regardless of prevailing vision conditions. The device is equipped with sensitive VOx microbolometer that allows to observe the objects in fog, smoke and in the absence of illumination. An additional advantage of the TPC series cameras is the ability to detect fire and send a signal to the alarm control panel when it occurs.



SPECIFICATION

Sensor:	Uncooled VOx microbolometer
Matrix size:	160 x 120 px
Pixel pitch:	12 μ m
Thermal sensitivity (NETD):	< 50 mK @ F1.1
Spectral range:	7 μ m ... 14 μ m
Color palettes:	14
Lens:	1.0 mm
View angle:	56 °
Resolution:	1280 x 960 - 1.3 Mpx , 1280 x 720 - 720p

VIDEO CAMERA:

Sensor:	1/2.8 " Progressive Scan Exmor CMOS
Matrix size:	2.1 Mpx
Scanning system:	Progressive
Lens:	4 mm
View angle:	<ul style="list-style-type: none">• 86 ° (manufacturer data)• 75 ° (our tests result)
Optical zoom:	—
Digital zoom:	x 16
Min. illumination:	0.005 Lux (color) @ F1.8 0.0005 Lux (B/W) @ F1.8
Range of IR illumination:	35 m
S/N ratio:	> 50 dB (AGC off)

DELTA-OPTI Monika Matysiak; <https://www.delta.poznan.pl>
POL; 60-713 Poznań; Graniczna 10
e-mail: delta-opti@delta.poznan.pl; tel: +(48) 61 864 69 60

Resolution:	1920 x 1080 - 1080p 1280 x 720 - 720p 704 x 576 - D1
General information:	
Standard:	TCP/IP, CVBS
Video output:	CVBS - 1 Vpp / 75 Ω, BNC
RS-485 interface:	✓
Memory card slot:	Micro SD memory cards up to 128GB support (possible local recording)
Image compression method:	H.264 / MJPEG
Alarm inputs / outputs:	2 / 1
Audio:	<ul style="list-style-type: none"> • External microphone input • Audio output
Bitrate:	640 ... 8192 kbps - H.264
Main stream frame rate:	25 fps @ 1280 x 960 25 fps @ 1080p
Network interface:	10/100 Base-T (RJ-45)
Network protocols:	IPv4/IPv6, HTTP, HTTPS, SSL, TCP/IP, UDP, UPnP, ICMP, IGMP, SNMP, RTSP, RTP, SMTP, NTP, DHCP, DNS, PPPoE, DDNS, FTP, IP Filter, QoS, Bonjour, 802.1x Radius
WEB Server:	Built-in, NVR compliance
Max. number of on-line users:	20
ONVIF:	16.12
Mobile phones support:	Port 37777 <ul style="list-style-type: none"> • Android: Darmowa aplikacja gDMSS Plus • iOS (iPhone): Darmowa aplikacja iDMSS Plus
Default IP address:	192.168.1.108
Default admin user / password:	admin / admin
Web browser access ports:	80, 37777
PC client access ports:	37777
Mobile client access ports:	37777
Port ONVIF:	80
RTSP URL:	rtsp://admin:hasło@192.168.1.108:554/cam/realmonitor?channel=1&subtype=0 - Main stream rtsp://admin:hasło@192.168.1.108:554/cam/realmonitor?channel=1&subtype=1 - Sub stream
Main features:	<ul style="list-style-type: none"> • The possibility of overlapping the image from a thermal imaging camera in a classic image • WDR - 120 dB - Wide Dynamic Range • ROI - improve the quality of selected parts of image • 3D-DNR - Digital Noise Reduction • PIP - Picture In Picture • IVS analysis : crossing the line (tripwire), intrusion, abandoned/missing object, object detection (people, vehicle), fire detection - The IVS analysis functions can be defined independently for the thermal imaging camera and the vision camera • Audio detection • Motion Detection • Configurable Privacy Zones • BLC/HLC - Back Light / High Light Compensation • AGC - Automatic Gain Control • Sharpness - sharper image outlines • Mirror - Mirror image • Day/Night mode (color/b&w/auto) • ICR - Movable InfraRed filter
Power supply:	12 V DC / 1000 mA (power adapter included)



Power consumption:	≤ 12 W
Housing:	Compact - Metal
Color:	White
"Index of Protection":	IP67
Operation temp:	-30 °C ... 60 °C
Dimensions:	Ø 90 x 238 mm
Weight:	0.88 kg
Supported languages:	English
Manufacturer / Brand:	DAHUA
Guarantee:	3 years

PRESENTATION



Side view:



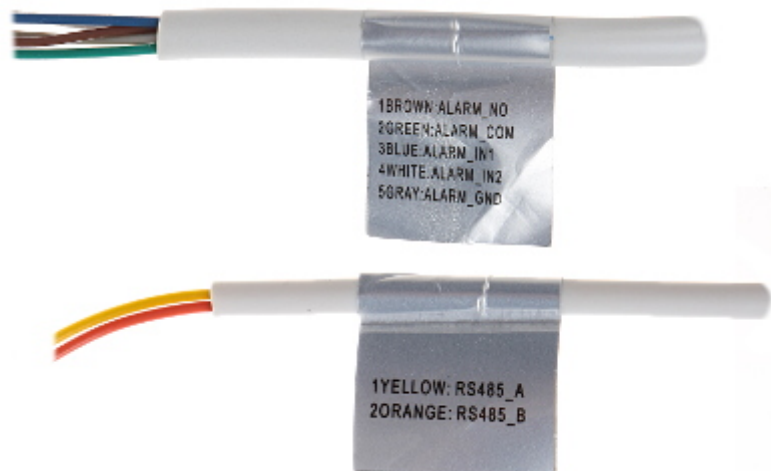
Mounting side view:



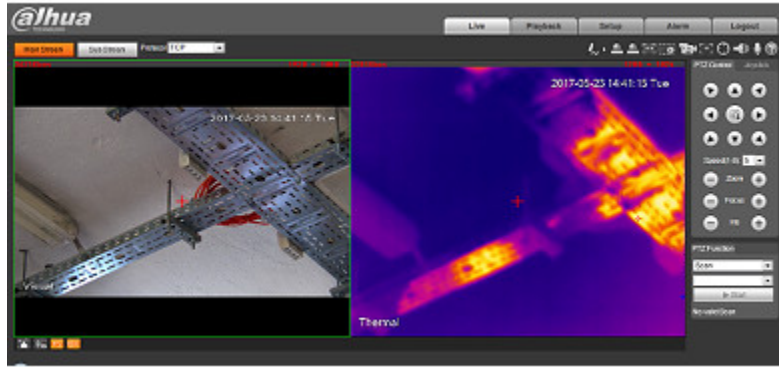
Camera connectors:



Connectors description:



Example captures of device interface:



OUR TESTS

Camera image at artificial illumination (about 30Lux):



Camera image at night conditions with internal built-in IR illuminator on:



Camera image at direct strong light opposite to camera:



Image comparison of the video camera and the thermal imaging camera in sample color pallets:



Image Fusion functions:



Edge detection function:

