

Code: DS-2TD2617-3/V1

IP HYBRID THERMAL IMAGING CAMERA **DS-2TD2617-3/V1** 3.1 mm - 720p, 4 mm - 1080p Hikvision

Net: **988.23 EUR** Gross: **1 215.52 EUR**

The DS-2TD2617-3/V1 Thermal Imaging Camera is a modern solution that allows to detect the presence of people, animals and vehicles regardless of prevailing vision conditions. The device is equipped with sensitive VOx microbolometer that allows to observe the objects in fog, smoke and in the absence of illumination. An additional advantage of the DS-2TDxxxx series cameras is the ability to detect fire and send a signal to the alarm control panel when it occurs.



SPECIFICATION

| | |
|-----------------------------|--|
| Sensor: | Uncooled VOx microbolometer |
| Matrix size: | 160 x 120 px |
| Pixel pitch: | 17 μ m |
| Thermal sensitivity (NETD): | < 40 mK @ F1.1 |
| Spectral range: | 8 μ m ... 14 μ m |
| Color palettes: | 15 |
| Lens: | 3.1 mm |
| View angle: | 50 ° |
| Resolution: | 1280 x 720 - 720p , 704 x 576 - D1 , 352 x 288 - CIF , 320 x 240 - QVGA |

VIDEO CAMERA:


| | |
|--------------------|---|
| Sensor: | 1/2.8 " Progressive Scan Exmor CMOS |
| Matrix size: | 2.1 Mpx |
| Scanning system: | Progressive |
| Lens: | 4 mm |
| View angle: | • 87 ° (manufacturer data) • 85 ° (our tests result) |
| Optical zoom: | <input checked="" type="checkbox"/> |
| Min. illumination: | 0.002 Lux (color) @ F1.5 0.0002 Lux @ F1.5 |



DELTA-OPTI Monika Matysiak; <https://www.delta.poznan.pl>
POL; 60-713 Poznań; Graniczna 10
e-mail: delta-opti@delta.poznan.pl; tel: +(48) 61 864 69 60

| | |
|---------------------------|--|
| Range of IR illumination: | 40 m |
| Resolution: | 1920 x 1080 - 1080p 1280 x 960 - 1.3 Mpx 1280 x 720 - 720p |

General information:

| | |
|--------------------------------|---|
| Standard: | TCP/IP |
| Video output: | CVBS - 1 Vpp / 75 Ω |
| RS-485 interface: |  |
| Memory card slot: | Micro SD memory cards up to 128GB support (possible local recording) |
| Image compression method: | H.265+ / H.265 / H.264+ / H.264 / MJPEG |
| Alarm inputs / outputs: | 2 / 2 |
| Audio: | <ul style="list-style-type: none"> External microphone input Audio output |
| Main stream frame rate: | 25 fps @ 720p 25 fps @ 1080p |
| Network interface: | 10/100 Base-T (RJ-45) |
| Network protocols: | IPv4/IPv6, HTTP, HTTPS, IEEE 802.1x, QoS, FTP, SMTP, UPnP, SNMP, DNS, DDNS, NTP, RTSP, RTCP, RTP, TCP, UDP, IGMP, ICMP, DHCP, PPPoE |
| WEB Server: | Built-in, NVR compliance |
| Max. number of on-line users: | 20 |
| ONVIF: | 16.12 |
| Mobile phones support: | Port no.: 8000 or access by a cloud (P2P) <ul style="list-style-type: none"> Android: Darmowa aplikacja iVMS-4500 or Hik-Connect iOS (iPhone): Darmowa aplikacja iVMS-4500 or Hik-Connect |
| Default IP address: | 192.168.1.64 |
| Default admin user / password: | admin / - The administrator password should be set at the first start |
| Web browser access ports: | 80 |
| PC client access ports: | Port no.: 8000 or access by a cloud (P2P) - iVMS-4200 application |
| Mobile client access ports: | 8000 |
| Port ONVIF: | 80 |
| RTSP URL: | <ul style="list-style-type: none"> Main stream VIDEO CAMERA : rtsp://user:password@192.168.1.64:554/Streaming/Channels/101/ THERMAL IMAGING CAMERA : rtsp://uzytkownik:haslo@192.168.1.64:554/Streaming/Channels/201/ Sub stream VIDEO CAMERA : rtsp://user:password@192.168.1.64:554/Streaming/Channels/102/ THERMAL IMAGING CAMERA : rtsp://uzytkownik:haslo@192.168.1.64:554/Streaming/Channels/202/ |



| | |
|------------------------|---|
| Main features: | <ul style="list-style-type: none"> • The possibility of overlapping the image from a thermal imaging camera in a classic image • Temperature measurement • D-WDR - Wide Dynamic Range • 3D-DNR - Digital Noise Reduction • PIP - Picture In Picture • BLC - Back Light Compensation • ICR - Movable InfraRed filter • Motion Detection • AGC - Automatic Gain Control • Sharpness - sharper image outlines • Mirror - Mirror image • Audio detection • Day/Night mode (color/b&w/auto) • D-ZOOM - Digital Zoom • DDE (Digital Detail Enhancement) - the function automatically optimizes the contrast of the thermal image in high-dynamic scenes - small differences in the temperature distribution of the examined object are highlighted • Intelligent Image Analysis - Only for thermal imaging camera : crossing the line (tripwire), intrusion, detection of entry into the area / exit from the area, classification of people and vehicles, dynamic detection of fire source |
| Power supply: | <ul style="list-style-type: none"> • PoE (802.3af), • 12 V DC / 1 A |
| Power consumption: | ≤ 12 W @ 12 V DC |
| Housing: | Dome - Metal |
| Color: | White |
| "Index of Protection": | IP66 |
| Operation temp: | -40 °C ... 60 °C |
| Weight: | 1.55 kg |
| Dimensions: | 352 x 114 x 115 mm |
| Supported languages: | Polish, English, Bulgarian, Croatian, Czech, Danish, Estonian, Finnish, French, Greek, Spanish, Dutch, Lithuanian, Latvian, German, Norwegian, Portuguese, Russian, Romanian, Serbian, Slovak, Slovenian, Swedish, Turkish, Hungarian, Italian |
| Manufacturer / Brand: | Hikvision |
| SAP Code: | 305400683 |
| Guarantee: | 3 years |

PRESENTATION



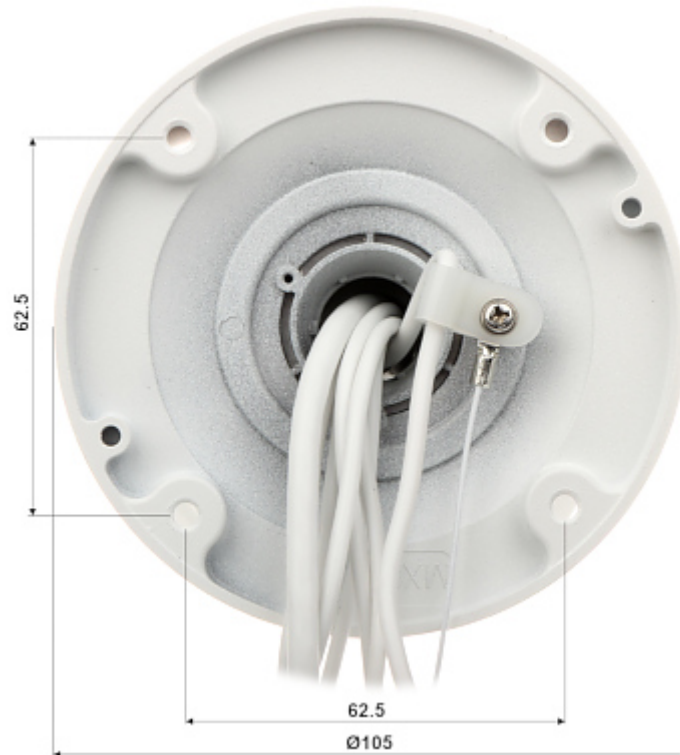
Side view:



Bottom view:



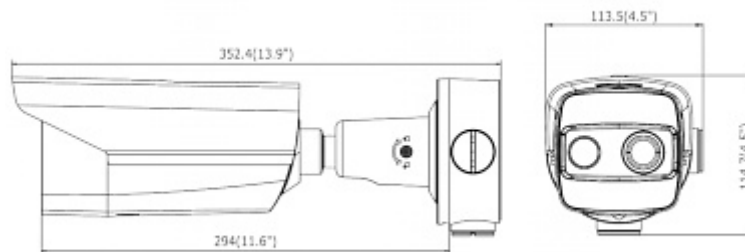
Mounting side view:



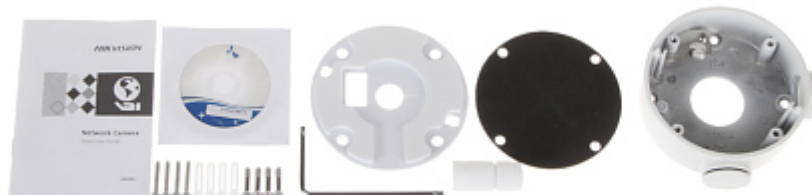
Camera connectors:



Dimensions:



In the kit:



OUR TESTS

Camera image at artificial illumination (about 30Lux):



Camera image at night conditions with internal built-in IR illuminator on:



Camera image at direct strong light opposite to camera:



Image comparison of the video camera and the thermal imaging camera in sample color pallets:

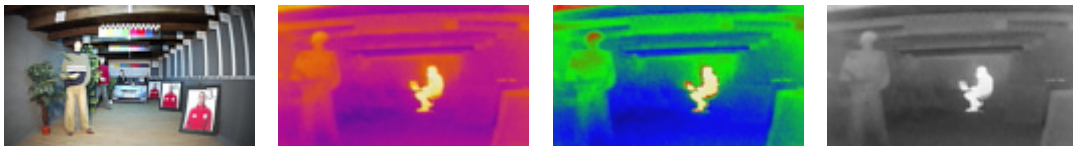


Image Fusion functions:

