

Code: BCS-BIP7501-AI

## IP CAMERA **BCS-BIP7501-AI** - 5 Mpx

Net: **578.63 EUR** Gross: **578.63 EUR**



IP camera equipped with very good high resolution sensor. Due to above it is perfect solution for surveillance systems requiring persons or vehicles recognition.

The camera has extensive functions of intelligent image analysis.

### SPECIFICATION

Standard:	TCP/IP
Sensor:	1/2.7 " STARVIS™ CMOS
Matrix size:	5 Mpx
Resolution:	2592 x 1944 - 5 Mpx , 2688 x 1520 - 4 Mpx , 2560 x 1440 - 3.7 Mpx , 2304 x 1296 - 3 Mpx , 1920 x 1080 - 1080p , 1280 x 960 - 1.3 Mpx , 1280 x 720 - 720p
Video output:	1 Vpp / 75 Ω
Lens:	—
Auto Iris socket:	DC
Min. illumination:	0.009 Lux / F1.7 (color)
S/N ratio:	> 50 dB
Image compression method:	H.265+ / H.265 / H.264+ / H.264 / MJPEG
Alarm inputs / outputs:	2 / 1
RS-485 interface:	✓
Protocols:	Pelco-D, Pelco-P and others
Main stream frame rate:	25 fps @ 1080p
Audio:	<ul style="list-style-type: none"><li>• Microphone built-in</li><li>• External microphone input</li><li>• Audio output</li><li>• Bi-directional audio streaming support</li></ul>

DELTA-OPTI Monika Matysiak; <https://www.delta.poznan.pl>  
POL; 60-713 Poznań; Graniczna 10  
e-mail: [delta-opti@delta.poznan.pl](mailto:delta-opti@delta.poznan.pl); tel: +(48) 61 864 69 60

Network interface:	10/100 Base-T (RJ-45)
Network protocols:	HTTP, TCP, ARP, RTSP, RTP, UDP, RTCP, SMTP, FTP, DHCP, DNS, DDNS, PPPoE, IPv4/IPv6, SNMP, QoS, UPnP, NTP, P2P
WEB Server:	Built-in
Max. number of on-line users:	20
ONVIF:	18.06
Memory card slot:	Micro SD memory cards up to 256GB support (possible local recording)
Mobile phones support:	Port no.: 37777 or access by a cloud (P2P) <ul style="list-style-type: none"> <li>• Android: Free application <a href="#">DMSS</a></li> <li>• iOS (iPhone): Free application <a href="#">DMSS</a></li> </ul>
Default IP address:	192.168.1.108
Default admin user / password:	admin / - The administrator password should be set at the first start
Web browser access ports:	80, 37777
PC client access ports:	37777
Mobile client access ports:	37777
Port ONVIF:	80
RTSP URL:	rtsp://admin:haslo@192.168.1.108:554/cam/realmonitor?channel=1&subtype=0 - Main stream rtsp://admin:haslo@192.168.1.108:554/cam/realmonitor?channel=1&subtype=1 - Sub stream
Main features:	<ul style="list-style-type: none"> <li>• WDR - 120 dB - Wide Dynamic Range</li> <li>• 2D-DNR, 3D-DNR - Digital Noise Reduction</li> <li>• EIS - Electronic Image Stabilization</li> <li>• F-DNR (Defog) - Reduction of image noise caused by precipitation</li> <li>• ROI - improve the quality of selected parts of image</li> <li>• AGC - Automatic Gain Control</li> <li>• WB - White Balance (ATW/AWB/manual/indoor/outdoor)</li> <li>• BLC - configurable Back Light Compensation</li> <li>• HLC - High Light Compensation (spot)</li> <li>• Day/Night mode (color/b&amp;w/auto)</li> <li>• ICR - Movable InfraRed filter</li> <li>• Motion Detection</li> <li>• Audio detection</li> <li>• Configurable Privacy Zones</li> <li>• Mirror - Mirror image</li> <li>• Sharpness - sharper image outlines</li> <li>• Heat map - the selection in the image by corresponding colors the areas with different traffic</li> <li>• IVS analysis : crossing the line (tripwire), intrusion - classification of people and vehicles, abandoned/missing object, fast moving, illegal parking, detection of people gathering, loitering detection, face detection - advanced face recognition and search functions, people counting - support for 4 independent detection areas</li> </ul>
Power supply:	<ul style="list-style-type: none"> <li>• ePoE,</li> <li>• PoE (802.3af),</li> <li>• 12 V DC / 770 mA,</li> <li>• 24 V AC / 380 mA</li> </ul>
Power consumption:	9.2 W
Housing:	Metal
Color:	White
Permissible relative humidity:	10 % ... 95 %
Operation temp:	-30 °C ... 60 °C
Weight:	0.54 kg
Dimensions:	136 x 75 x 66 mm
Supported languages:	Polish, English



Manufacturer / Brand:	BCS
Guarantee:	3 years

## PRESENTATION

Front view:



Side view:



Rear view:



In the kit:



## OUR TESTS

Camera image at artificial illumination (about 30Lux):



DELTA-OPTI Monika Matysiak; <https://www.delta.poznan.pl>  
POL; 60-713 Poznań; Graniczna 10  
e-mail: delta-opti@delta.poznan.pl; tel: +(48) 61 864 69 60

Camera image at night conditions with external IR illuminator on:



Camera image at direct strong light opposite to camera:



Camera image at night conditions, at different illumination values show below:

10 LUX:



1 LUX:



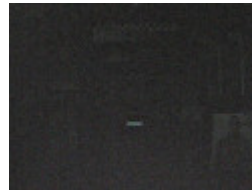
0.1 LUX:



0.01 LUX:



0.001 LUX:



## PACKAGE

Dimensions (L x W x H): 0x0x0 mm	Gross Weight: 0 kg
----------------------------------	--------------------