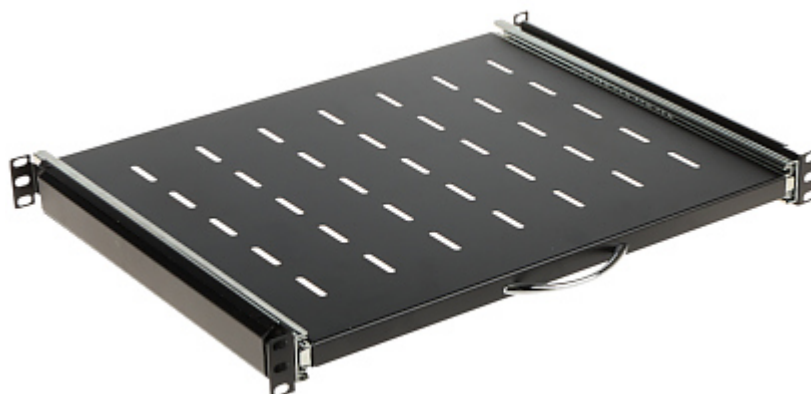


Code: P19S/350/B

SLIDING SHELF P19S/350/B

Net: 21.22 EUR Gross: 26.10 EUR

The shelf for the RACK 19" cabinet, designed for devices with housings which don't support the RACK cabinet mounting standard.



SPECIFICATION

Width:	19 "
Height:	1 U
Mount:	four-point
Application:	RACK 19"
Color:	Black (RAL 9005)
Main features:	<ul style="list-style-type: none">• Shelf slides out up to 350 mm from the front mounting rails• Mounting rail spacing : min. 350 mm, max. 610 mm
Weight:	2.34 kg
Dimensions:	482 x 350 x 42 mm
Guarantee:	2 years

PRESENTATION

Side view:



The mounting depth of rails is adjustable:

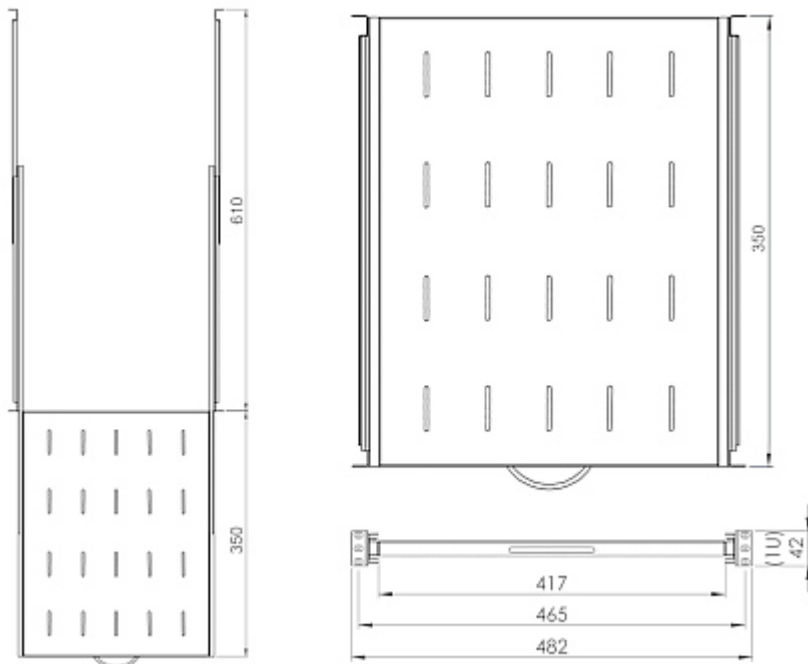
DELTA-OPTI Monika Matysiak; <https://www.delta.poznan.pl>
POL; 60-713 Poznań; Graniczna 10
e-mail: delta-opti@delta.poznan.pl; tel: +(48) 61 864 69 60



Rear view:



Dimensions:



In the kit:



PACKAGE

Dimensions (L x W x H): 0x0x0 mm	Gross Weight: 0 kg
----------------------------------	--------------------



DELTA-OPTI Monika Matysiak; <https://www.delta.poznan.pl>
 POL; 60-713 Poznań; Graniczna 10
 e-mail: delta-opti@delta.poznan.pl; tel: +(48) 61 864 69 60