

Code: A19-N\*P4

## LEG LEVELER **A19-N\*P4** TO RACK CABINET

Net: 7.69 EUR Gross: 9.46 EUR



The leg is used to level standing RACK cabinets. It ensures stability of the cabinets with mounted devices.

### SPECIFICATION

<b>In package:</b>	<b>4 pcs The price for package</b>
Height:	100 mm
Width:	Ø 39 mm
Screw type:	M12
Max cabinet's weight:	250 kg
Weight:	0.12 kg
Guarantee:	2 years

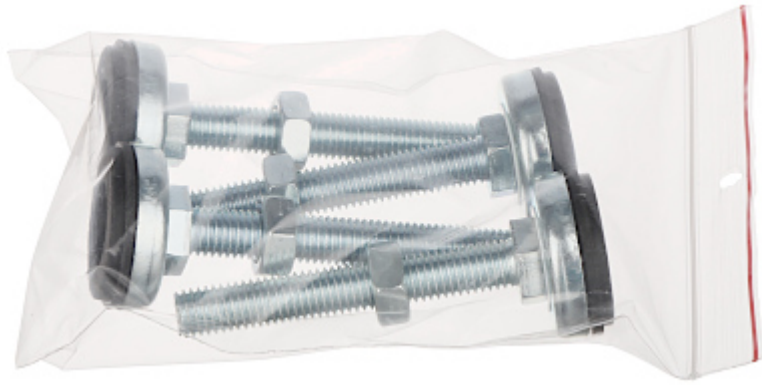
### PRESENTATION



DELTA-OPTI Monika Matysiak; <https://www.delta.poznan.pl>  
POL; 60-713 Poznań; Graniczna 10  
e-mail: delta-opti@delta.poznan.pl; tel: +(48) 61 864 69 60



Package:



## PACKAGE

Dimensions (L x W x H): 0x0x0 mm	Gross Weight: 0 kg
----------------------------------	--------------------