

Code: ORS-22

## RS-485 SPLITTER WITH OPTOISOLATION **ORS-22**

Net: **36.50 EUR** Gross: **44.90 EUR**

The ORS-22 allows to connect RS-485 signal from two different transmitters (eg DVR, control keyboard, PC) and control two separate RS-485 buses connected to the receivers (CCTV cameras). Device enables optical isolation among output buses and among output buses and input of the RS-485 signal. The basic application of the ORS-22 is protection of the CCTV system against damage due to any overvoltages existence on devices connected to the RS-485 bus (for example as result of lightning).

Device also allows to split a single RS-485 channel to 2 channels, that makes possible to use the star topology. This allows to connect each camera using the RS-485 cable up to 1200m length. So, the device helps arrange the CCTV system wiring and increases the maximal distances of the RS-485 signal transmission.



### SPECIFICATION

Input:	RS-485
Number of inputs:	2 pcs
Output:	RS-485
Number of outputs:	2 pcs
Transmission range:	1200 m / Input 1200 m / Output
Optoisolation:	1000 V RS-485
Communication:	Simplex
Baud rates:	2400 ... 115200 bps
Main features:	<ul style="list-style-type: none"><li>• optical isolation between each of the RS-485 outputs</li><li>• optical isolation between RS-485 outputs and input</li><li>• increase the maximal distance for RS-485 transmission</li><li>• enable to use the star topology instead of standard bus topology</li><li>• protection against lightning discharges and voltage differences and strokes between devices</li></ul>
Power supply:	12 V DC / 0.15 A (power adapter not included)
Weight:	0.11 kg
Dimensions:	118 x 58 x 30 mm
Manufacturer / Brand:	DELTA
Guarantee:	<b>3 years</b>

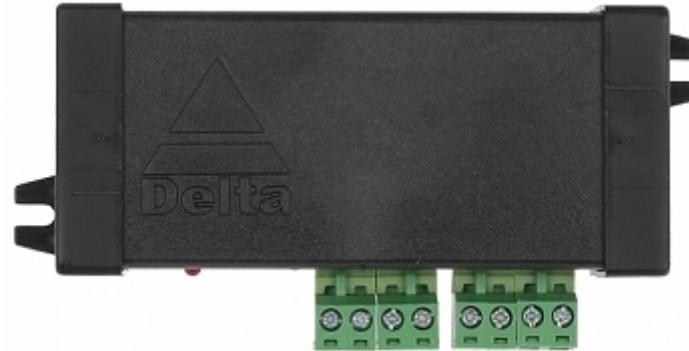
### PRESENTATION

DELTA-OPTI Monika Matysiak; <https://www.delta.poznan.pl>  
POL; 60-713 Poznań; Graniczna 10  
e-mail: [delta-opti@delta.poznan.pl](mailto:delta-opti@delta.poznan.pl); tel: +(48) 61 864 69 60

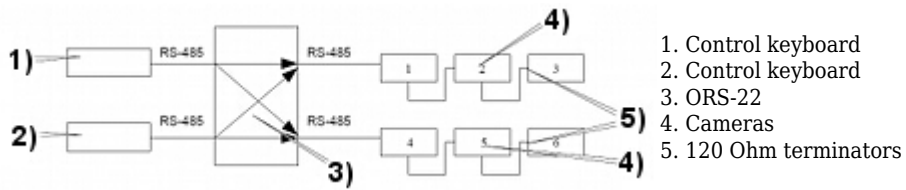
Front panel with terminals:



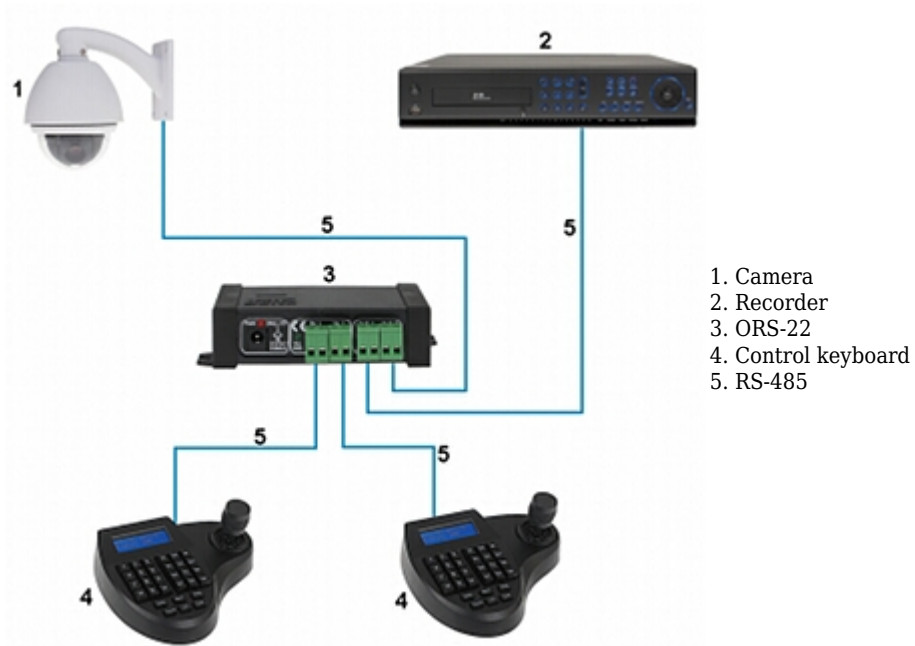
Top view:

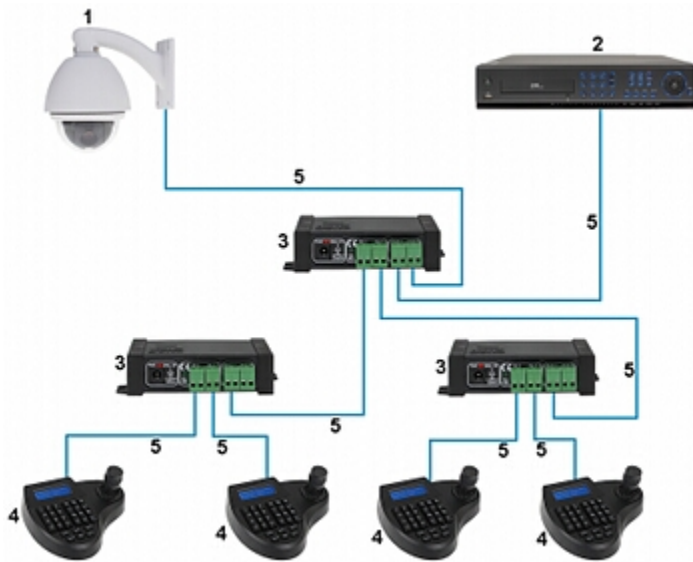


Schematic diagram of example installation:

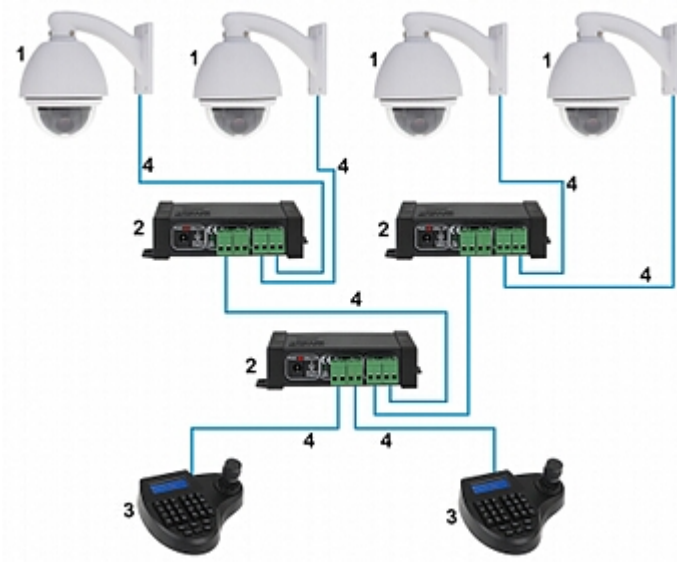


Examples of connection diagrams:

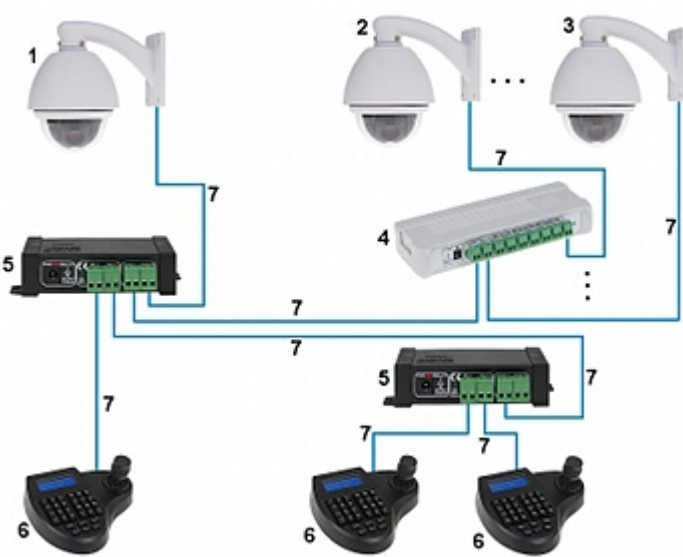




- 1. Camera
- 2. Recorder
- 3. ORS-22
- 4. Control keyboard
- 5. RS-485



- 1. Camera
- 2. ORS-22
- 3. Control keyboard
- 4. RS-485



Example of control of 9 cameras from 3 different keyboard panels in the same time.

- 1. Camera 1
- 2. Camera 2
- 3. Camera 9
- 4. ORS-8
- 5. ORS-22
- 6. Control keyboard
- 7. RS-485



DELTA-OPTI Monika Matysiak; <https://www.delta.poznan.pl>  
POL; 60-713 Poznań; Graniczna 10  
e-mail: [delta-opti@delta.poznan.pl](mailto:delta-opti@delta.poznan.pl); tel: +(48) 61 864 69 60