

Code: SD50225U-HNI

IP SPEED DOME CAMERA OUTDOOR **SD50225U-HNI** - 1080p 4.8 ... 120 mm DAHUA

Net: **818.65 EUR** Gross: **1 006.94 EUR**

IP camera with efficient H.264 / H.265 image compression algorithm for clear and smooth video streaming at maximal resolution of 1080p. Due to above it is perfect solution for surveillance systems requiring persons or vehicles recognition.

PoE powering possibility, compatible with the 802.3at standard makes the device more universal and easier to install.

For a few models of IP cameras working at $\geq 1920 \times 1080$ resolution we recommend to use of network with 1Gb/s bandwidth.



SPECIFICATION

Standard:	TCP/IP
Sensor:	1/2.8 " STARVIS™ CMOS
Matrix size:	2.1 Mpx
Resolution:	1920 x 1080 - 1080p 1280 x 960 - 1.3 Mpx 1280 x 720 - 720p
Scanning system:	Progressive
Lens:	4.8 ... 120 mm
View angle:	• 59 ° ... 2.4 ° (manufacturer data) • 59 ° ... 3.4 ° (our tests result)
Optical zoom:	x 25
Digital zoom:	x 16
Min. illumination:	• 0.005 Lux @ F1.6 (color), • 0.0005 Lux @ F1.6 (B/W)
S/N ratio:	> 55 dB
Video output:	—
Preset rotation speed:	max. 500 °/s
Rotation speed (manual control):	0.1 °/s ... 350 °/s (horizontal) 0.1 °/s ... 250 °/s (vertical)

DELTA-OPTI Monika Matysiak; <https://www.delta.poznan.pl>
POL; 60-713 Poznań; Graniczna 10
e-mail: delta-opti@delta.poznan.pl; tel: +(48) 61 864 69 60

Horizontal rotation range:	360 ° continuous
Vertical rotation range:	0 ° ... 90 °
RS-485 interface:	—
Number of presets:	300
Horizontal scan:	✓
Route settings:	8
Image compression method:	H.265 / H.264 / MJPEG
Bitrate:	448 ... 8192 kbps - H.264 768 ... 4608 kbps - H.265
Alarm inputs / outputs:	2 / 1
Audio:	<ul style="list-style-type: none"> • External microphone input • Audio output
Main stream frame rate:	max. 50 fps - 1080p max. 50 fps - 720p
Network interface:	10/100 Base-T (RJ-45)
Network protocols:	HTTP, HTTPS, TCP/IP, UDP, UPnP, ICMP, IGMP, RTP, SNMP, NTP, DHCP, DNS, PPPoE, DDNS, FTP, IP Filter, QoS, Bonjour, IEEE 802.1x
WEB Server:	Built-in, NVR compliance
Max. number of on-line users:	20
ONVIF:	2.42
Memory card slot:	Micro SD memory cards up to 128GB support (possible local recording)
Main features:	<ul style="list-style-type: none"> • WDR - 120 dB - Wide Dynamic Range • ICR - Movable InfraRed filter • 2D-DNR, 3D-DNR - Digital Noise Reduction • Configurable Privacy Zones - 24 • BLC/HLC - Back Light / High Light Compensation • Sharpness - sharper image outlines • Mirror - Mirror image • Day/Night mode (color/b&w/auto) • Audio detection • ROI - improve the quality of selected parts of image • IVS analysis : crossing the line (tripwire), intrusion, abandoned/missing object, face detection • Intelligent Object Tracking • EIS - Electronic Image Stabilization
Mobile phones support:	Port 37777 <ul style="list-style-type: none"> • Android: Free application DMSS • iOS (iPhone): Free application DMSS
Default IP address:	192.168.1.108
Default admin user / password:	admin / admin
Web browser access ports:	80, 37777
PC client access ports:	37777
Mobile client access ports:	37777
Port ONVIF:	80
RTSP URL:	rtsp://admin:hasło@192.168.1.108:554/cam/realmonitor?channel=1&subtype=0 - Main stream rtsp://admin:hasło@192.168.1.108:554/cam/realmonitor?channel=1&subtype=1 - Sub stream
Power supply:	<ul style="list-style-type: none"> • PoE (802.3at), • 24 V AC / 1.5 A (power adapter included)
Power consumption:	<ul style="list-style-type: none"> • ≤ 13 W • ≤ 24 W - Heater on



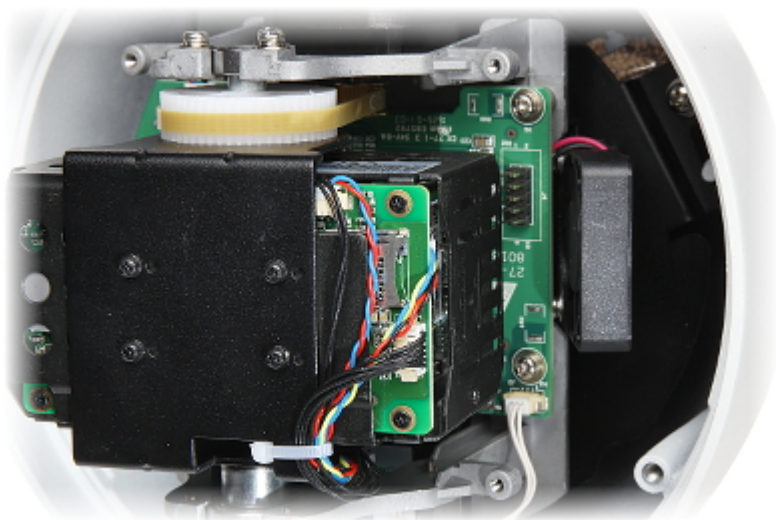
Housing:	Speed Dome Metal
Color:	White
"Index of Protection":	IP67
Vandal-proof:	✓, IK10
Operation temp:	-40 °C ... 60 °C
Weight:	2.75 kg (with bracket)
Dimensions:	Ø 186 x 415 mm (with bracket)
Supported languages:	English, Polish
Manufacturer / Brand:	DAHUA
Guarantee:	3 years

PRESENTATION

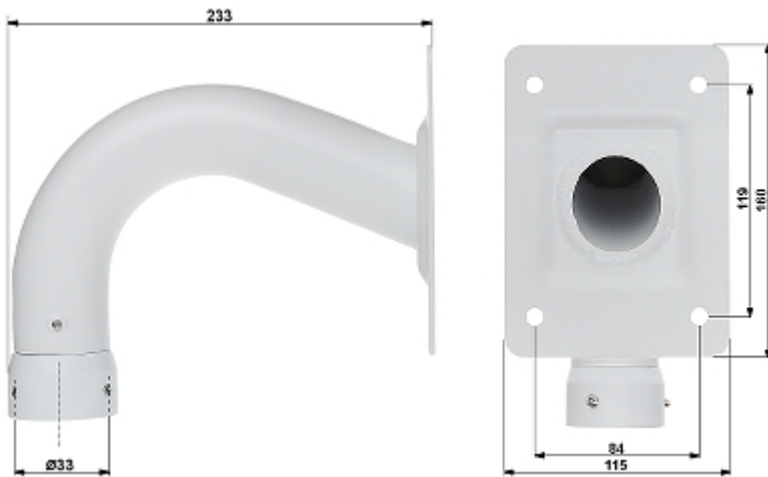
Bottom view:



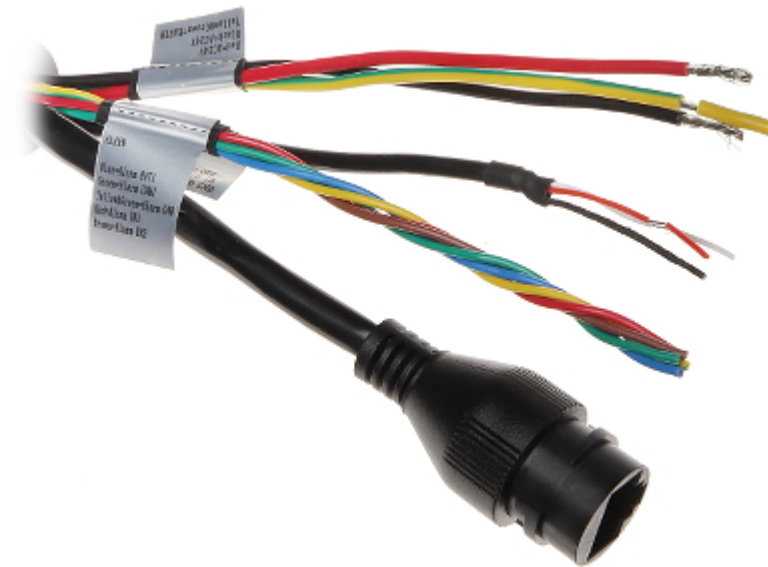
Memory card slot:



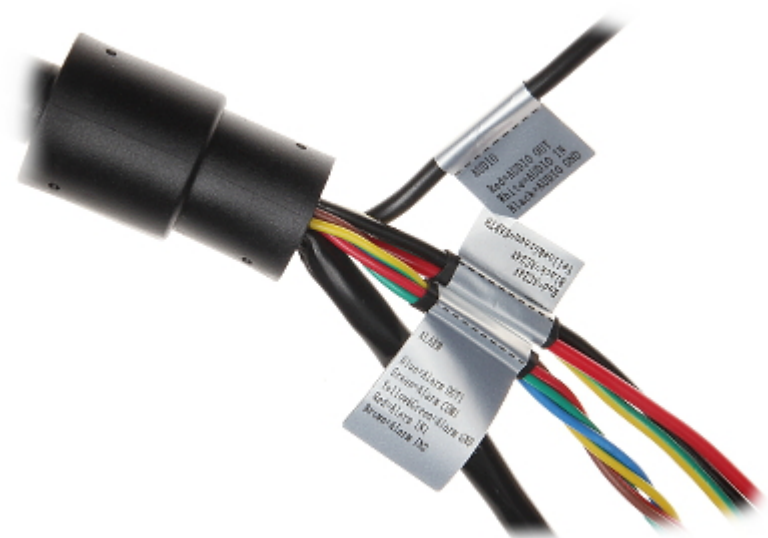
Bracket dimensions:



Connectors:



Connectors description:



See how to initialize DAHUA cameras:

:
In the kit:



OUR TESTS

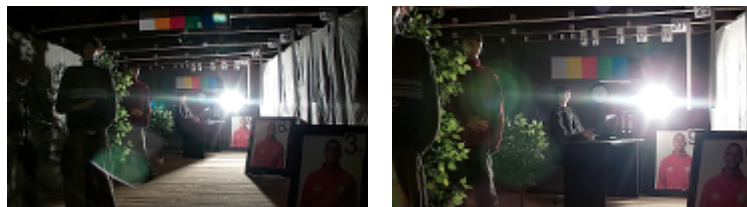
Camera image at artificial illumination (about 30Lux):



Camera image at night conditions with external IR illuminator on:



Camera image at direct strong light opposite to camera:



Camera image at night conditions, at different illumination values show below:

