

Code: SD22204DB-GNY

# IP SPEED DOME CAMERA OUTDOOR **SD22204DB-GNY** - 1080p 2.8 ... 12 mm DAHUA

Net: **368.87 EUR** Gross: **368.87 EUR**

IP camera equipped with very good high resolution sensor. Due to above it is perfect solution for surveillance systems requiring persons or vehicles recognition. Thanks to the "Starlight" technology used, the camera only needs very low lighting to obtain a clear color image.



## SPECIFICATION

Standard:	TCP/IP
Sensor:	1/2.8 " STARVIS™ CMOS
Matrix size:	2.1 Mpx
Resolution:	1920 x 1080 - 1080p , 1280 x 960 - 1.3 Mpx , 1280 x 720 - 720p
IR illuminator:	—
Lens:	2.8 ... 12 mm
View angle:	• 99 ° ... 32 ° (manufacturer data) • 91 ° ... 30 ° (our tests result)
Optical zoom:	x 4
Digital zoom:	x 16
Min. illumination:	0.005 Lux (color) 0.0005 Lux (B/W)
Preset rotation speed:	• 100 °/s (horizontal) • 60 °/s (vertical)
Rotation speed (manual control):	• 0.1 °/s ... 100 °/s (horizontal) • 0.1 °/s ... 60 °/s (vertical)
Horizontal rotation range:	0 ° ... 355 - Rotation of the head is limited by stops
Vertical rotation range:	0 ° ... 90 °
RS-485 interface:	—
Protocols:	DH-SD, PELCO-D/P
Number of presets:	300

DELTA-OPTI Monika Matysiak; <https://www.delta.poznan.pl>  
POL; 60-713 Poznań; Graniczna 10  
e-mail: [delta-opti@delta.poznan.pl](mailto:delta-opti@delta.poznan.pl); tel: +(48) 61 864 69 60

Horizontal scan:	—
Route settings:	8
Image compression method:	H.265+ / H.265 / H.264+ / H.264 / MJPEG
Audio:	—
Alarm inputs / outputs:	—
Main stream frame rate:	25 fps @ 1080p
Network interface:	10/100 Base-TX (RJ-45)
Network protocols:	FTP, IPv4/IPv6, Bonjour, DNS, RTCP, PPPoE, TCP/IP, NTP, RTP, RTMP, IEEE 802.1x, HTTP, HTTPS, SNMPv1/v2c/v3(MIB-2), QoS, ARP, NFS, SMB, SSL, UDP, UPnP, ICMP, IGMP, RTSP, SMTP, DHCP, DNS, DDNS, FTP, IP Filter, QoS
Memory card slot:	Micro SD memory cards up to 512GB support (possible local recording)
WEB Server:	Built-in
Max. number of on-line users:	20
ONVIF:	21.12
Mobile phones support:	Port 37777 <ul style="list-style-type: none"> <li>• Android: Free application <a href="#">DMSS</a></li> <li>• iOS (iPhone): Free application <a href="#">DMSS</a></li> </ul>
Default IP address:	192.168.1.108
Default admin user / password:	admin / - The administrator password should be set at the first start
Web browser access ports:	80, 37777
PC client access ports:	37777
Mobile client access ports:	37777
Port ONVIF:	80
RTSP URL:	rtsp://admin:haslo@192.168.1.108:554/cam/realmonitor?channel=1&subtype=0 - Main stream rtsp://admin:haslo@192.168.1.108:554/cam/realmonitor?channel=1&subtype=1 - Sub stream
Main features:	<ul style="list-style-type: none"> <li>• D-WDR - Wide Dynamic Range</li> <li>• 2D-DNR, 3D-DNR - Digital Noise Reduction</li> <li>• EIS - Electronic Image Stabilization</li> <li>• F-DNR (Defog) - Reduction of image noise caused by precipitation</li> <li>• ROI - improve the quality of selected parts of image</li> <li>• BLC/HLC - Back Light / High Light Compensation</li> <li>• Motion Detection</li> <li>• Configurable Privacy Zones</li> <li>• Sharpness - sharper image outlines</li> <li>• ICR - Movable InfraRed filter</li> <li>• AGC - Automatic Gain Control</li> <li>• Day/night mode</li> <li>• IVS analysis : Smart motion detection (with recognizing people and vehicles), face detection, crossing the line (tripwire), intrusion, detection of crossing a virtual fence, abandoned/missing object, fast moving, parking detection, detection of people gathering, classification of people and vehicles</li> </ul>
Power supply:	<ul style="list-style-type: none"> <li>• PoE (802.3af),</li> <li>• 12 V DC / 460 mA</li> </ul>
Power consumption:	≤ 6.1 W
Housing:	Speed Dome, Metal
Color:	White
Supported languages:	Polish, English, Czech, French, Spanish, Dutch, German, Portuguese, Russian, Romanian, Turkish, Italian
Operation temp:	-30 °C ... 60 °C



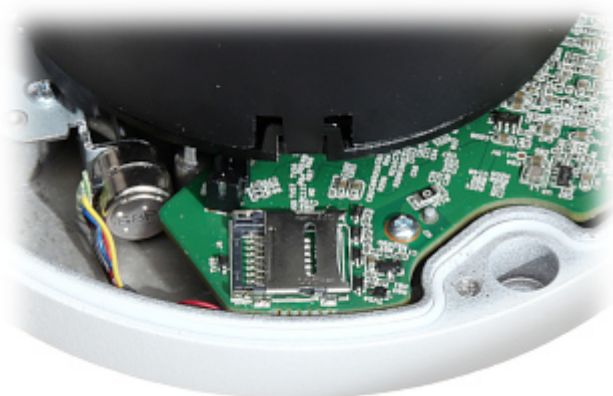
"Index of Protection":	IP66
Vandal-proof:	IK10
Weight:	0.54 kg
Dimensions:	Ø 122 x 89 mm
Manufacturer / Brand:	DAHUA
Guarantee:	<b>5 years</b>

## PRESENTATION

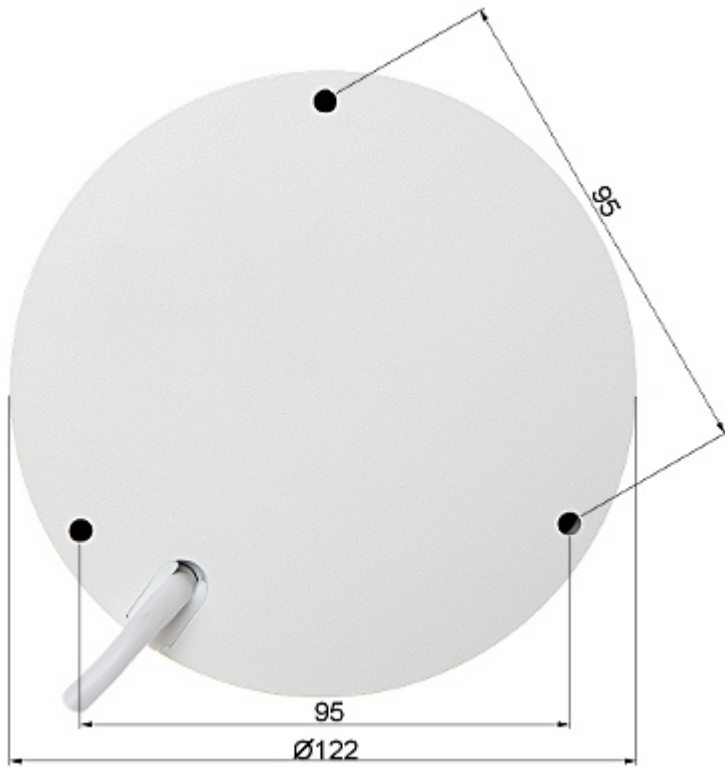
Camera view after remove the Dome cover:



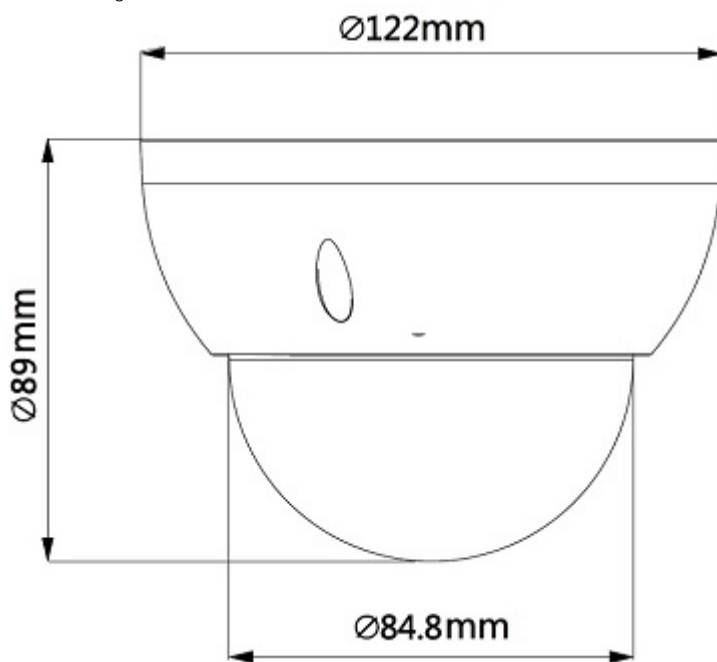
Memory card slot:



Camera dimensions:



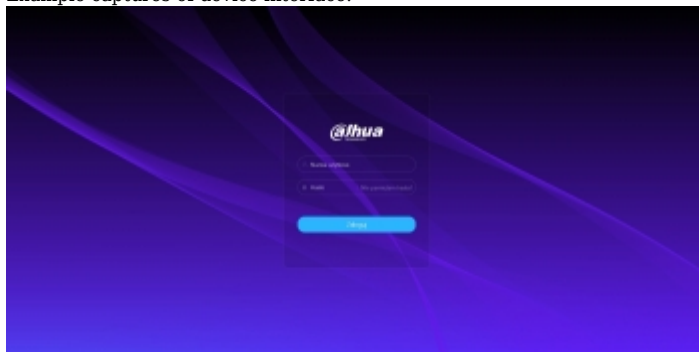
Camera mounting dimensions:

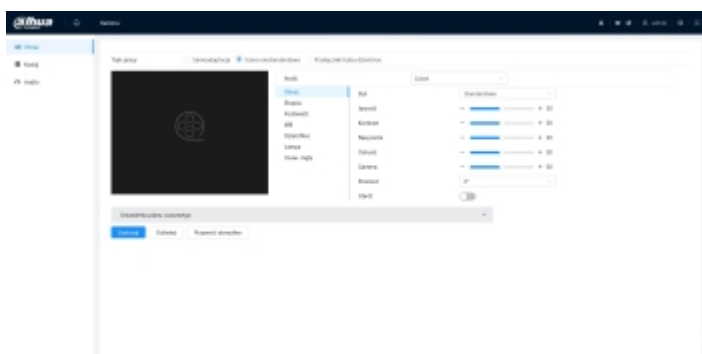
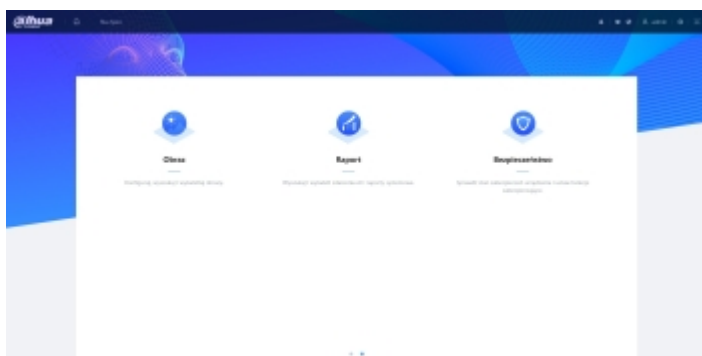
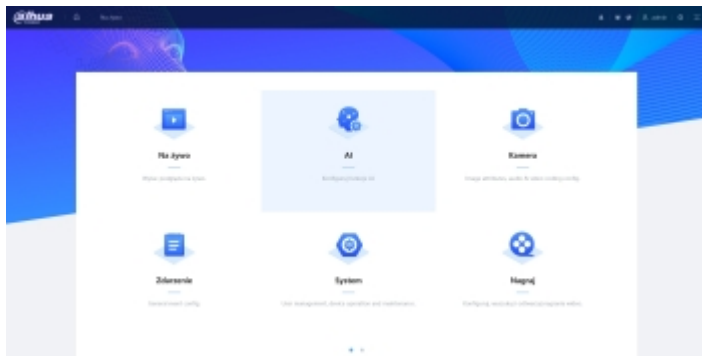


See how to initialize DAHUA cameras:

:

Example captures of device interface:





In the kit:



## OUR TESTS

Camera image at artificial illumination (about 30Lux):



Camera image at direct strong light opposite to camera:



Camera image at night conditions with external IR illuminator on:



Camera image at night conditions, at different illumination values show below:

10 LUX:



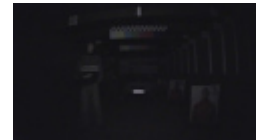
1 LUX:



0.1 LUX:



0.01 LUX:



## PACKAGE

Dimensions (L x W x H): 0x0x0 mm	Gross Weight: 0 kg
----------------------------------	--------------------