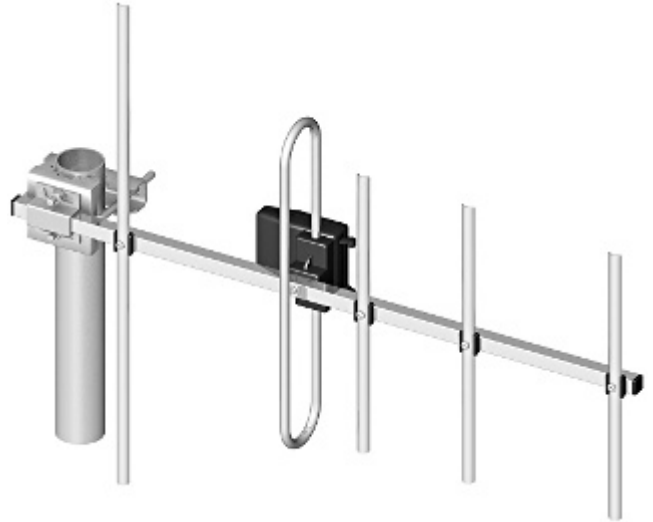


Code: CDMA-5/400-470/FME

DIRECTIONAL ANTENNA CDMA-5/400-470/FME

Net: 51.30 PLN Gross: 63.10 PLN

The CDMA-5/400-470/FME antenna is a modern device for enabling/improving advanced data services for broadband Internet access in CDMA technology in rooms and places where the simple built-in antennas of the used equipment do not provide satisfactory results.



SPECIFICATION

Frequency range:	400 ... 470 MHz
Connector:	FME Socket
Gain :	max. 6 dBi
Impedance:	50 Ω
Polarization:	Vertical
Main features:	<ul style="list-style-type: none">• Length of the cable : 5 m• Number of elements : 5• Very easy and quick assembly• Small dimensions
Weight:	0.53 kg
Dimensions:	570 mm
Guarantee:	2 years

PRESENTATION

Antenna connector:



DELTA-OPTI Monika Matysiak; <https://www.delta.poznan.pl>
POL; 60-713 Poznań; Graniczna 10
e-mail: delta-opti@delta.poznan.pl; tel: +(48) 61 864 69 60

PACKAGE

Dimensions (L x W x H): 0x0x0 mm	Gross Weight: 0 kg
----------------------------------	--------------------

