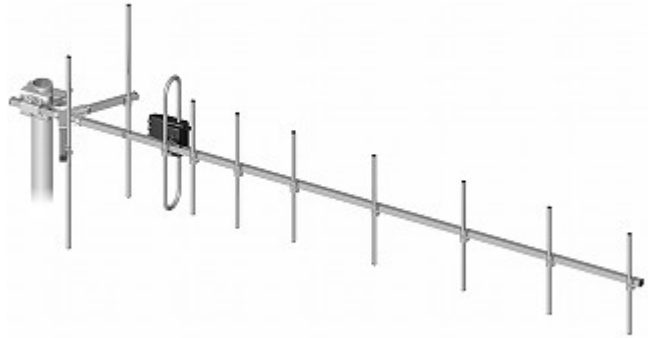


Code: CDMA-10/400-470/FME

## DIRECTIONAL ANTENNA **CDMA-10/400-470/FME**

Net: **19.05 EUR** Gross: **23.43 EUR**

The CDMA-10/400-470/FME antenna is a modern device for enabling/improving advanced data services for broadband Internet access in CDMA technology in rooms and places where the simple built-in antennas of the used equipment do not provide satisfactory results.



### SPECIFICATION

Frequency range:	400 ... 470 MHz
Connector:	FME Socket
Gain :	9.5 ... 12 dB
Impedance:	50 $\Omega$
Polarization:	Vertical
Main features:	<ul style="list-style-type: none"><li>• Length of the cable : 10 m</li><li>• Number of elements : 10</li><li>• Very easy and quick assembly</li></ul>
Weight:	1.1 kg
Dimensions:	1400 mm
Guarantee:	2 years

### PRESENTATION

Antenna connector:

