

Code: ATK-ALP/LTE+SMA/5

LOGARITHMIC ANTENNA **ATK-ALP/LTE+SMA/5** GSM/DCS/UMTS/HSDPA

Net: **21.64 EUR** Gross: **26.62 EUR**

Logarithmic antenna has been designed to use in GSM/DCS/UMTS/HSDPA/LTE systems. The antenna effectively solves the problems of inadequate signal level which often occurs in the case of modems/devices with built-in antennas.

To enjoy the full speed of LTE you must purchase 2 antennas - and install one vertically and the other horizontally.



SPECIFICATION

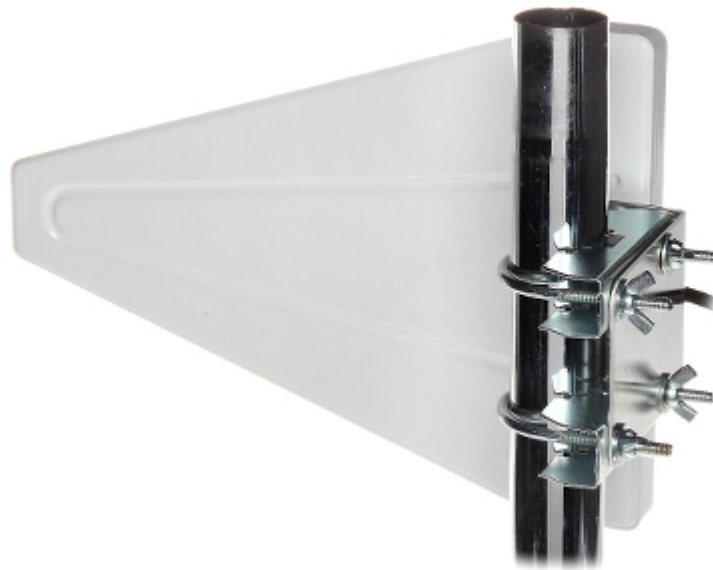
Frequency range:	800 ... 3000 MHz : GSM / DCS / UMTS / HSDPA / LTE
Connectors:	SMA plug
Gain :	max. 9 dBi
Impedance:	50 Ω
Horizontal beam width (H):	76 °
Vertical beam width (V):	66 °
Polarization:	Vertical
VSWR:	< 1.7
Main features:	<ul style="list-style-type: none">• Length of the cable - 5 m,• Antenna is DC short-circuited,• Maximal mast diameter 45 mm• Very easy and quick assembly
Weight:	0.31 kg
Dimensions:	260 x 180 x 25 mm
Guarantee:	2 years

PRESENTATION

DELTA-OPTI Monika Matysiak; <https://www.delta.poznan.pl>
POL; 60-713 Poznań; Graniczna 10
e-mail: delta-opti@delta.poznan.pl; tel: +(48) 61 864 69 60



Mast mounting diameter:



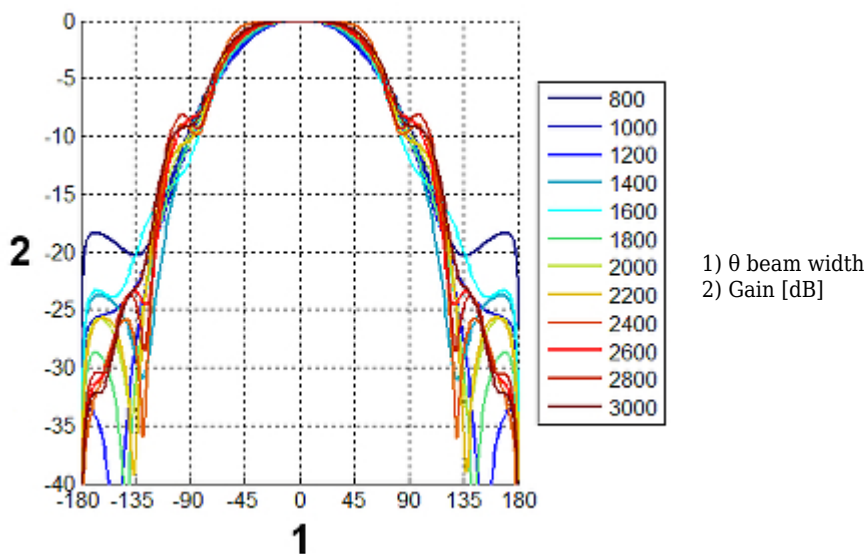
Antenna connector:



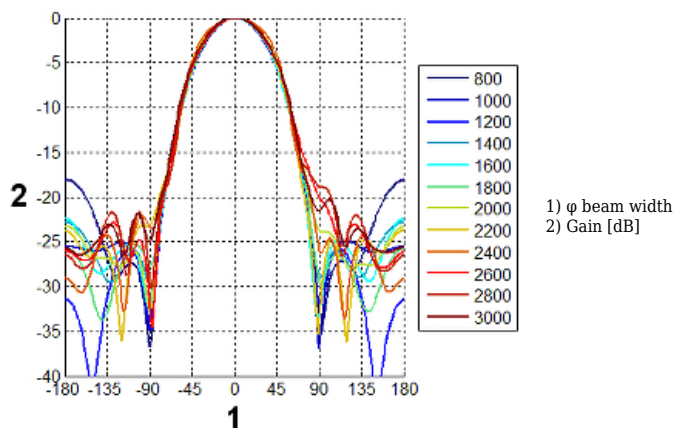
To enjoy the full speed of LTE you must purchase 2 antennas - and install one vertically and the other horizontally:



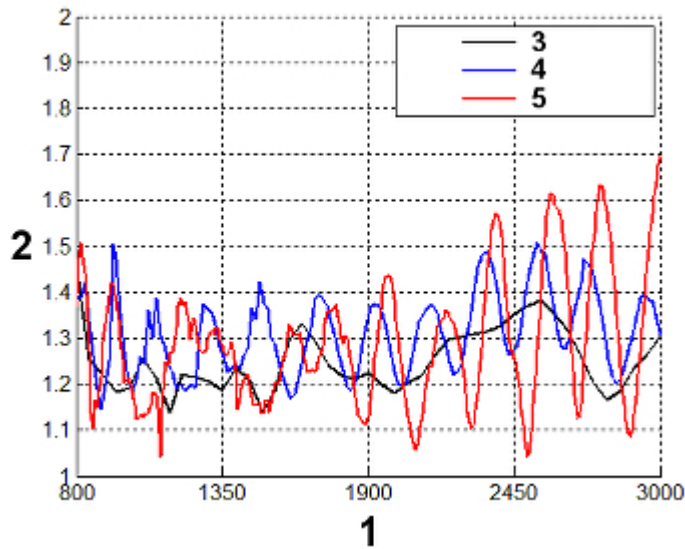
Antenna radiation patterns in horizontal plane:



Antenna radiation patterns in vertical plane:

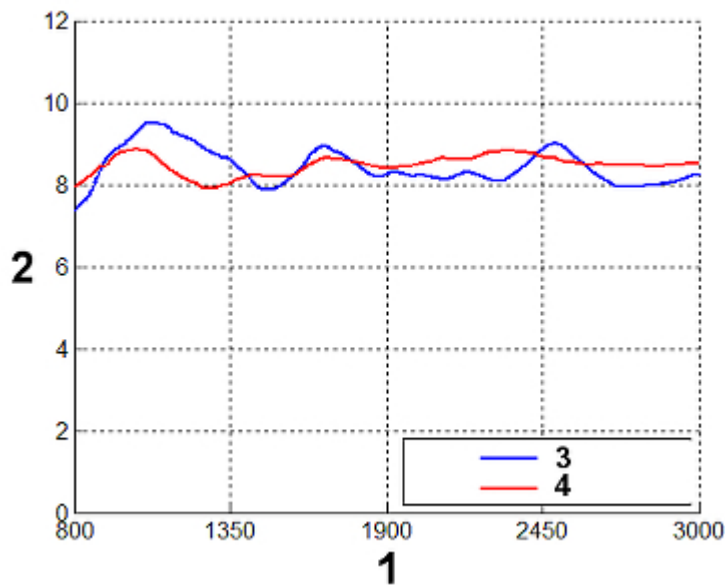


VSWR versus frequency:



- 1) Frequency [MHz]
- 2) VSWR
- 3) EM simulation
- 4) Antenna without cover
- 5) Antenna with cover

Gain versus frequency response:



- 1) Frequency [MHz]
- 2) Gain [dBi]
- 3) Antenna without cover
- 4) Antenna with cover

In the kit:



OUR OPINIONS



- Antenna does not support full speed of LTE due to the use of single polarization only.