

Code: NVR1104HC-S3

IP DVR **NVR1104HC-S3** 4 CHANNELS DAHUA

Net: **85.98 EUR** Gross: **105.76 EUR**

The DAHUA Cooper series product has been designed to maximum cost reduction while maintaining high quality and ease of use.



SPECIFICATION

Standard:	TCP/IP
Supported resolutions:	max. 6 Mpx - 3072 x 2048 px
Video outputs:	1 pcs HDMI 1 pcs VGA
Audio support:	4 Channels - Audio from cameras
Audio inputs:	<input type="checkbox"/>
Audio outputs:	<input type="checkbox"/>
Image compression method:	H.265+ / H.265 / H.264+ / H.264
Supported hard drives:	1 x 4 TB SATA
Recording modes:	Manual, Motion Detection, Schedule
Network protocols:	HTTP, HTTPS, TCP/IP, IPv4/IPv6, RTSP, UDP, NTP, DHCP, DNS, IP Filter, IP Search, P2P
ONVIF:	<input type="checkbox"/>
External storage devices backup:	Backup to USB drive (pendrive)
Searching and playback the records:	Records searching: by time and events type. Records playback: forward, backward, fast, slow Advanced searching (to the one second accuracy) All channels synchronous playback, Smart Search function
Bitrate:	max. 40 Mbps
Network functions:	Full support via network, Remote records copying, Web Server built-in max. 128 on-line users
Mobile phones support:	Port no.: 37777 or access by a cloud (P2P) • Android: Darmowa aplikacja gDMSS Plus • iOS (iPhone): Darmowa aplikacja iDMSS Plus See how to configure the P2P function in Dahua recorders and how to enable the mobile application
Default IP address:	192.168.1.108

DELTA-OPTI Monika Matysiak; <https://www.delta.poznan.pl>
POL; 60-713 Poznań; Graniczna 10
e-mail: delta-opti@delta.poznan.pl; tel: +(48) 61 864 69 60

Default admin user / password:	admin / - The administrator password should be set at the first start
Web browser access ports:	80, 37777
PC client access ports:	37777
Mobile client access ports:	37777
RTSP URL:	rtsp://admin:haslo@192.168.1.108:554/cam/realmonitor?channel=1&subtype=0 - Main stream rtsp://admin:haslo@192.168.1.108:554/cam/realmonitor?channel=1&subtype=1 - Sub stream
Alarm inputs / outputs:	<input type="checkbox"/>
USB:	2 pcs USB 2.0
PTZ control:	IP Speed Dome Cameras
Motion Detection:	22 x 18 motion zones, 6 sensitivity levels after motion detection records detected channels only
Mouse support:	<input type="checkbox"/>
IR remote controller in the set:	<input type="checkbox"/>
Switch PoE:	<input type="checkbox"/>
Power supply:	12 V DC / 1.5 A
Weight:	0.51 kg
Dimensions:	197 x 196 x 42 mm
Supported languages:	English, Polish
Country of origin:	China
Manufacturer / Brand:	DAHUA
Guarantee:	3 years

PRESENTATION

Top view:



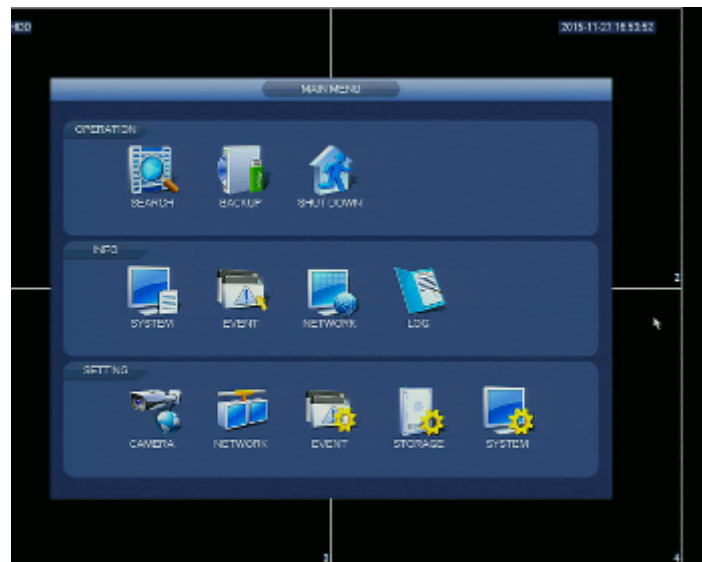
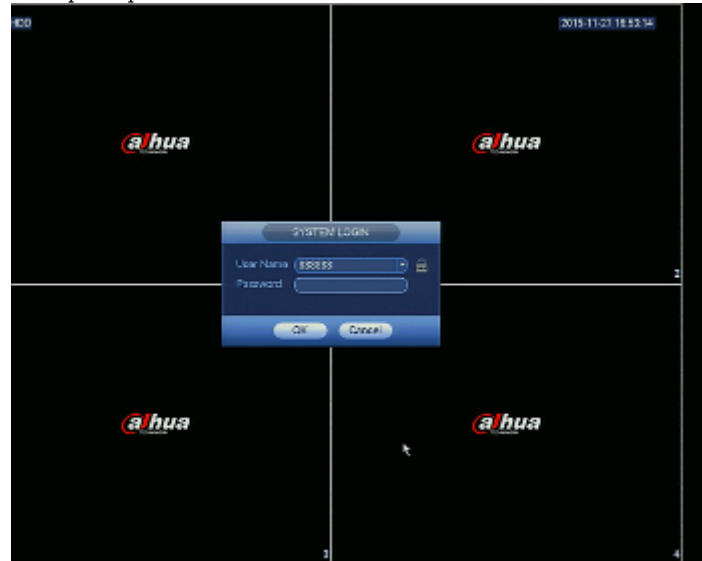
Rear panel:



In the kit:



Example captures of device interface:



OUR OPINIONS



- Audio transmission via network.
- The recorder is full compatible with Dahua cameras.