

Code: NVR104LS-P4

# IP DVR **NVR104LS-P4** 4 CHANNELS +4-PORT POE SWITCH UNIARCH

Net: **112.62 EUR** Gross: **138.52 EUR**

The UNIARCH series product has been designed to maximum cost reduction while maintaining high quality and ease of use.



## SPECIFICATION

Standard:	TCP/IP
Supported resolutions:	max. 5 Mpx - 2592 x 1920 px
Video outputs:	1 pcs HDMI 1 pcs VGA
Audio support:	4 Channels - Audio from cameras
Audio inputs:	<input type="checkbox"/>
Audio outputs:	1 pcs CINCH
Image compression method:	Ultra 265 / H.265 / H.264
Supported hard drives:	1 x 10 TB SATA
Recording modes:	Manual, Motion Detection, Schedule
Network protocols:	P2P, NTP, DHCP, PPPoE, ONVIF
External storage devices backup:	Backup to USB drive (pendrive)
Searching and playback the records:	Records searching: by time and events type. Records playback: forward, backward, fast, slow Advanced searching (to the one second accuracy) Synchronous playback of all channels
Network functions:	Full support via network, Remote records copying, Web Server built-in max. 128 on-line users
Bitrate:	max. 40 Mbps
Default admin user / password:	admin / 123456
Default IP address:	DHCP or 192.168.1.30
RTSP URL:	rtsp://192.168.1.30:554/unicast/c1/s0/live - Main stream rtsp://192.168.1.30:554/unicast/c1/s1/live - Sub stream
Web browser access ports:	80, 554
PC client access ports:	Port no.: 80 or access by a cloud (P2P) - PC: Darmowa aplikacja <a href="#">UniArch Client</a>
Mobile client access ports:	80

DELTA-OPTI Monika Matysiak; <https://www.delta.poznan.pl>  
POL; 60-713 Poznań; Graniczna 10  
e-mail: [delta-opti@delta.poznan.pl](mailto:delta-opti@delta.poznan.pl); tel: +(48) 61 864 69 60

Mobile phones support:	Port no.: 80 or access by a cloud (P2P) • Android: Darmowa aplikacja <a href="#">Uniarch</a> • iOS (iPhone): Darmowa aplikacja <a href="#">Uniarch</a>
Alarm inputs / outputs:	<input type="checkbox"/>
PTZ control:	IP Speed Dome Cameras
Motion Detection:	<input type="checkbox"/>
USB:	2 x USB 2.0
Mouse support:	<input type="checkbox"/>
IR remote controller in the set:	<input type="checkbox"/>
Switch PoE:	4-port PoE Switch built-in, 30 W / Channel, PoE (802.3af/at)
Maximum total switch load:	54 W
Power supply:	48 V DC / 1.35 A
Weight:	0.53 kg
Dimensions:	205 x 213 x 45 mm
Supported languages:	Polish, English, Czech, French, Spanish, Dutch, German, Portuguese, Slovenian, Italian
Country of origin:	China
Manufacturer / Brand:	UNIVIEW / UNIARCH
Guarantee:	<b>3 years</b>

## PRESENTATION

Top view:



Rear panel:



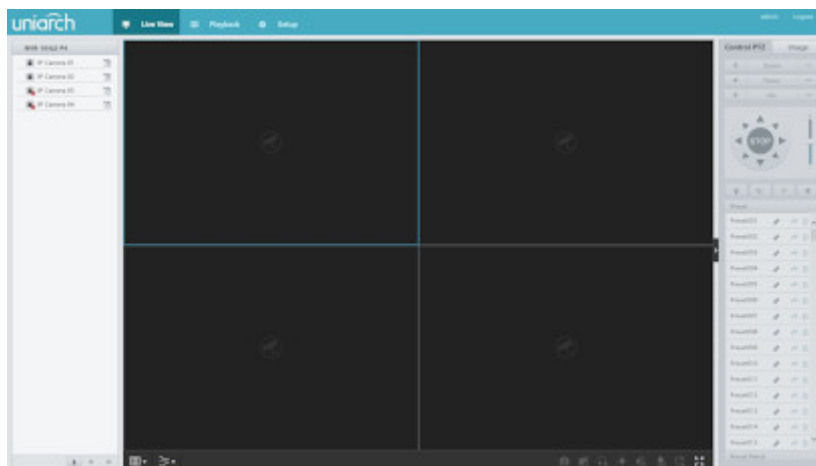
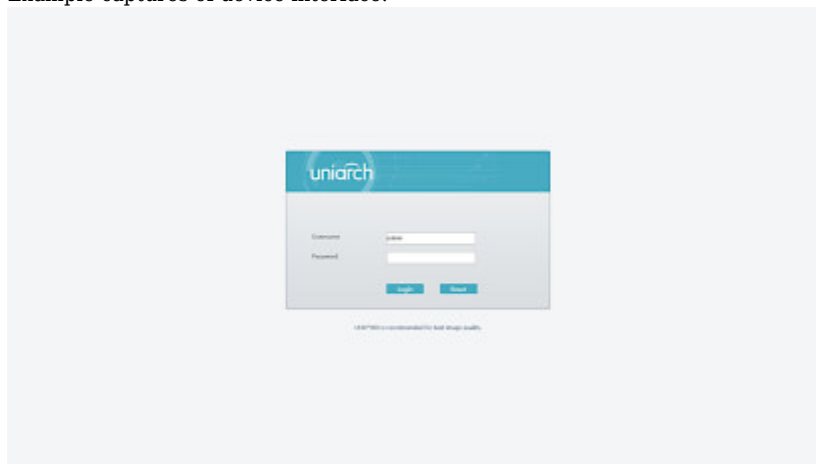
See how to mount a hard disk drive and configure the recorder:

:

In the kit:



Example captures of device interface:



## OUR OPINIONS



- First real IP plug and play.
- Very extensive software for iOS.

