

Code: NVR2104HS-I

IP DVR **NVR2104HS-I** 4 CHANNELS DAHUA

Net: **148.18 EUR** Gross: **182.26 EUR**

NVR equipped with advanced functions of intelligent image analysis.



SPECIFICATION

Standard:	TCP/IP
Supported resolutions:	max. 12 Mpx
Video outputs:	1 pcs HDMI 4K 1 pcs VGA
Audio support:	4 Channels - Audio from cameras
Audio inputs:	1 pcs CINCH - External microphone input
Audio outputs:	1 pcs CINCH
Image compression method:	H.265+ / H.265 / H.264+ / H.264 / MJPEG
USB:	2 pcs USB 2.0
Supported hard drives:	1 x 8 TB SATA III
Recording modes:	Manual, Sensor, Motion detection, Schedule
Network protocols:	HTTP, HTTPS, TCP/IP, IPv4/IPv6, RTSP, UDP, NTP, DHCP, DNS, ONVIF
External storage devices backup:	Backup to USB drive (pendrive)
Searching and playback the records:	Records searching: by time and events type. Records playback: forward, backward, fast, slow Advanced searching (to the one second accuracy) All channels synchronous playback, Smart Search function
Bitrate:	max. 80 Mbps
Network functions:	Full support via network, Remote records copying, Web Server built-in max. 128 on-line users
Mobile phones support:	Port no.: 37777 or access by a cloud (P2P) • Android: Free application gDMSS Plus or DMSS • iOS (iPhone): Free application iDMSS Plus or DMSS See how to configure the P2P function in Dahua recorders and how to enable the mobile application
Default IP address:	192.168.1.108
Default admin user / password:	admin / - The administrator password should be set at the first start
Web browser access ports:	80, 37777

DELTA-OPTI Monika Matysiak; <https://www.delta.poznan.pl>
POL; 60-713 Poznań; Graniczna 10
e-mail: delta-opti@delta.poznan.pl; tel: +(48) 61 864 69 60

PC client access ports:	37777
Mobile client access ports:	37777
RTSP URL:	rtsp://admin:haslo@192.168.1.108:554/cam/realmonitor?channel=1&subtype=0 - Main stream rtsp://admin:haslo@192.168.1.108:554/cam/realmonitor?channel=1&subtype=1 - Sub stream
Alarm inputs / outputs:	—
PTZ control:	IP Speed Dome Cameras
Motion Detection:	22 x 18 motion zones - after motion detection records detected channels only
Intelligent Image Analysis:	✓
Mouse support:	✓
IR remote controller in the set:	—
Main features:	<ul style="list-style-type: none"> • Advanced peripheral protection functions: intrusion, crossing line with separate rules for vehicles and pedestrians, • classification of people and vehicles, • Face recognition and analysis in real time (up to 8 photos per second) : <ul style="list-style-type: none"> - Comparison of faces with images from the database - Face analysis: determination of sex, age and characteristic elements of appearance (glasses, facial hair, mask) - Real-time search of people on the basis of given side information in the range corresponding to features recognized by artificial intelligence of the device - Support for up to 10 face databases, including 5000 face images - Face bases can be used globally or locally for one video channel - depending on the need - In the base other than face photography, can also be stored such information as: name, sex, date of birth, nationality, address, ID number • Intelligent object search based on a photo - the recorder allows to upload a picture of a person or vehicle to search for it on a camera recording
Power supply:	12 V DC / 1.5 A (power adapter included)
Weight:	0.83 kg
Dimensions:	260 x 232 x 48 mm
Supported languages:	Polish, English, Bulgarian, Czech, Danish, Finnish, French, Greek, Spanish, Dutch, German, Portuguese, Russian, Romanian, Slovenian, Serbian, Swedish, Hungarian, Italian
Country of origin:	China
Manufacturer / Brand:	DAHUA
Guarantee:	3 years

PRESENTATION

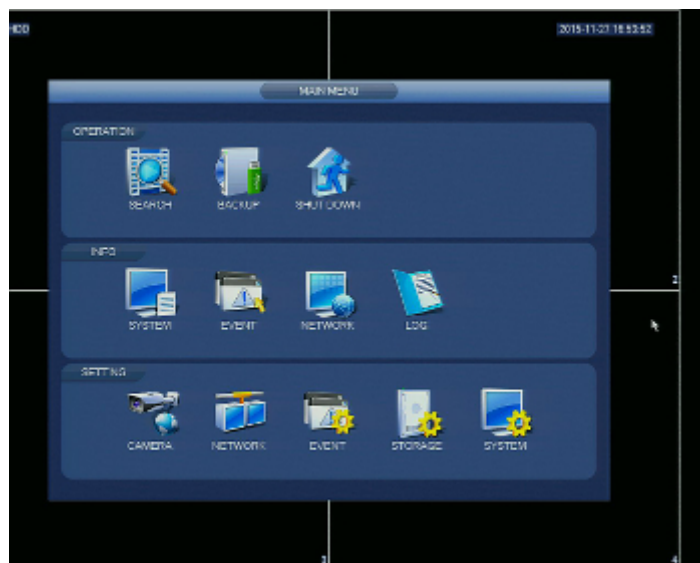
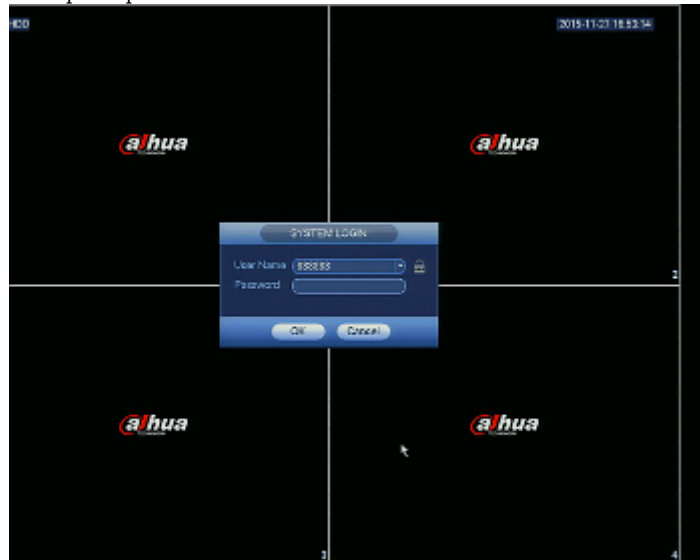
Front panel:



Rear panel:



Example captures of device interface:



In the kit:



DELTA-OPTI Monika Matysiak; <https://www.delta.poznan.pl>
POL; 60-713 Poznań; Graniczna 10
e-mail: delta-opti@delta.poznan.pl; tel: +(48) 61 864 69 60



DELTA-OPTI Monika Matysiak; <https://www.delta.poznan.pl>
POL; 60-713 Poznań; Graniczna 10
e-mail: delta-opti@delta.poznan.pl; tel: +(48) 61 864 69 60