

Code: NVR301-04LS3-P4

NVR NVR301-04LS3-P4 4 CHANNELS, 4 PoE UNIVIEW

Net: 100.28 EUR Gross: 100.28 EUR



The product has been designed to minimize costs while maintaining high quality and ease of use.

SPECIFICATION

| | |
|-------------------------------------|---|
| Standard: | TCP/IP |
| Supported resolutions: | max. 8.3 Mpx 4K UHD - 3840 x 2160 px |
| Video outputs: | 1 pcs HDMI 4K 1 pcs VGA |
| Audio support: | 4 Channels - Audio from cameras |
| Audio inputs: | — |
| Audio outputs: | 1 pcs RCA (CINCH) |
| Image compression method: | Ultra 265 / H.265 / H.264 |
| Supported hard drives: | 1 x 6 TB SATA |
| Recording modes: | Manual, Motion Detection, Schedule |
| Network protocols: | TCP/IP, P2P, UPnP, NTP, DHCP, PPPoE, HTTP, HTTPS, DNS, DDNS, SMTP, RTSP |
| External storage devices backup: | Backup to USB drive (pendrive, external drive) |
| Searching and playback the records: | Records searching: by time and events type. Records playback: forward, backward, fast, slow Advanced searching (to the one second accuracy) 1/4 channel synchronous playback Channels played simultaneously : 1 @ 8.3 Mpx, 30 fps 4 @ 5 Mpx, 25 fps 4 @ 4 Mpx, 25 fps 4 @ 3 Mpx, 25 fps 4 @ 1080p, 30 fps |
| Network interface: | 1 x RJ-45 - 10 / 100 Mbps |
| Network functions: | Full support via network, Remote records copying, Web Server built-in max. 128 on-line users |
| ONVIF: | ✓ |
| Bitrate: | max. 64 Mbps |
| Default admin user / password: | admin / 123456 |
| Default IP address: | DHCP or 192.168.1.30 |



DELTA-OPTI Monika Matysiak; <https://www.delta.poznan.pl>
POL; 60-713 Poznań; Graniczna 10
e-mail: delta-opti@delta.poznan.pl; tel: +(48) 61 864 69 60

| | |
|----------------------------------|---|
| RTSP URL: | rtsp://192.168.1.30:554/unicast/c1/s0/live - Main stream rtsp://192.168.1.30:554/unicast/c1/s1/live - Sub stream |
| Web browser access ports: | 80, 554 |
| PC client access ports: | Port no.: 80 or access by a cloud (P2P) - PC: Free application EZStation |
| Mobile client access ports: | 80 |
| Mobile phones support: | Port no.: 80 or access by a cloud (P2P) • Android: Free application EZView • iOS (iPhone): Free application EZView |
| Alarm inputs / outputs: | — |
| PTZ control: | PTZ Uniview cameras |
| Motion Detection: | ✓ |
| Intelligent Image Analysis: | ✓ |
| USB: | 2 x USB 2.0 |
| Mouse support: | ✓ |
| IR remote controller in the set: | — |
| Main features: | Functions implemented in cooperation between the recorder and cameras that support these functions <ul style="list-style-type: none"> • Corridor mode - useful for monitoring corridors, entrance gates and narrow rooms • Motion Detection • Audio detection • IVS analysis : Human detection, crossing the line (tripwire), intrusion, detection of entry into the area / exit from the area |
| Switch PoE: | 4-port PoE Switch built-in, 25.5 W / Channel - PoE (802.3af/at) |
| Maximum total switch load: | 54 W |
| Power supply: | 48 V DC / 1.35 A (power adapter included) |
| Weight: | 0.57 kg |
| Dimensions: | 210 x 205 x 46 mm |
| Supported languages: | Polish, English, Czech, French, Spanish, Dutch, German, Portuguese, Slovak, Italian |
| Country of origin: | China |
| Manufacturer / Brand: | UNIVIEW |
| Guarantee: | 3 years |

PRESENTATION

Top view:



DELTA-OPTI Monika Matysiak; <https://www.delta.poznan.pl>
POL; 60-713 Poznań; Graniczna 10
e-mail: delta-opti@delta.poznan.pl; tel: +(48) 61 864 69 60



Rear panel:

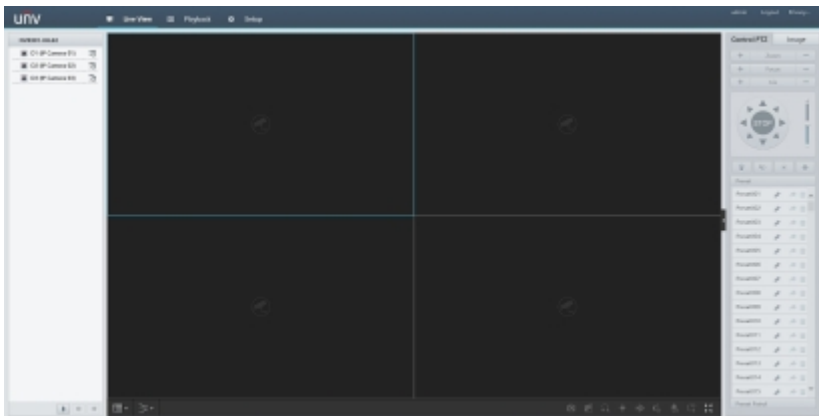


See how to mount a hard disk drive and configure the recorder:

:
In the kit:



Example captures of device interface:



PACKAGE

| | |
|----------------------------------|--------------------|
| Dimensions (L x W x H): 0x0x0 mm | Gross Weight: 0 kg |
|----------------------------------|--------------------|



DELTA-OPTI Monika Matysiak; <https://www.delta.poznan.pl>
POL; 60-713 Poznań; Graniczna 10
e-mail: delta-opti@delta.poznan.pl; tel: +(48) 61 864 69 60