

Code: NVR4108HS-4KS2+2TB

PROMOTIONAL SET NVR + HDD **NVR4108HS-4KS2+2TB** 8 CHANNELS DAHUA

Net: **239.50 EUR** Gross: **294.59 EUR**



Promotional set for the NVR4108HS-4KS2 recorder with the HDD-ST2000VX008 hard disk.

SPECIFICATION

Standard:	TCP/IP
Supported resolutions:	max. 8.3 Mpx - 3840 x 2160 px, 4K UHD
Video outputs:	1 pcs HDMI 1 pcs VGA
Audio support:	8 Channels - Audio from cameras
Audio inputs:	1 pcs CINCH - External microphone input
Audio outputs:	1 pcs CINCH
Image compression method:	H.265 / H.264 / MJPEG
Supported hard drives:	1 x 6 TB SATA
Recording modes:	Manual, Motion Detection, Schedule
Network protocols:	HTTP, HTTPS, TCP/IP, IPv4/IPv6, UPnP, RTSP, UDP, SMTP, NTP, DHCP, DNS, DDNS, IP Filter, PPPoE, FTP, IP Search, ONVIF 2.4
External storage devices backup:	Backup to USB drive (pendrive)
Searching and playback the records:	Records searching: by time and events type. Records playback: forward, backward, fast, slow Advanced searching (to the one second accuracy) All channels synchronous playback, Smart Search function
Bitrate:	max. 80 Mbps
Network functions:	Full support via network, Remote records copying, Web Server built-in max. 128 on-line users
ONVIF:	2.4

DELTA-OPTI Monika Matysiak; <https://www.delta.poznan.pl>
POL; 60-713 Poznań; Graniczna 10
e-mail: delta-opti@delta.poznan.pl; tel: +(48) 61 864 69 60

Mobile phones support:	Port no.: 37777 or access by a cloud (P2P) <ul style="list-style-type: none"> • Android: Darmowa aplikacja gDMSS Plus, Android: Darmowa aplikacja IMOU • iOS (iPhone): Darmowa aplikacja iDMSS Plus, iOS (iPhone): Darmowa aplikacja IMOU <p>See how to configure the P2P function in Dahua recorders and how to enable the mobile application</p>
Default admin user / password:	admin / admin
Default IP address:	192.168.1.108
Web browser access ports:	80, 37777
PC client access ports:	37777
Mobile client access ports:	37777
RTSP URL:	rtsp://admin:hasło@192.168.1.108:554/cam/realmonitor?channel=1&subtype=0 - Main stream rtsp://admin:hasło@192.168.1.108:554/cam/realmonitor?channel=1&subtype=1 - Sub stream
Alarm inputs / outputs:	<input type="checkbox"/>
PTZ control:	IP Speed Dome Cameras
Motion Detection:	22 x 18 motion zones - after motion detection records detected channels only
Intelligent Image Analysis:	<input type="checkbox"/>
USB:	2 pcs USB 2.0
Mouse support:	<input type="checkbox"/>
IR remote controller in the set:	<input type="checkbox"/>
Power supply:	12 V DC / 2 A (power adapter included)
Weight:	0.84 kg
Dimensions:	260 x 225 x 48 mm
Supported languages:	English, Polish
Country of origin:	China
Manufacturer / Brand:	DAHUA
Guarantee:	3 years

HDD FOR DVR:

Capacity:	2 TB
Interface:	SATA 6 Gb/s
Size format:	3.5 "
Cache memory:	64 MB
Designed to continuous operation 24/7:	<input type="checkbox"/>
Weight:	0.520 kg
Manufacturer / Brand:	Seagate
Guarantee:	2 years

PRESENTATION



DELTA-OPTI Monika Matysiak; <https://www.delta.poznan.pl>
POL; 60-713 Poznań; Graniczna 10
e-mail: delta-opti@delta.poznan.pl; tel: +(48) 61 864 69 60

Front panel:



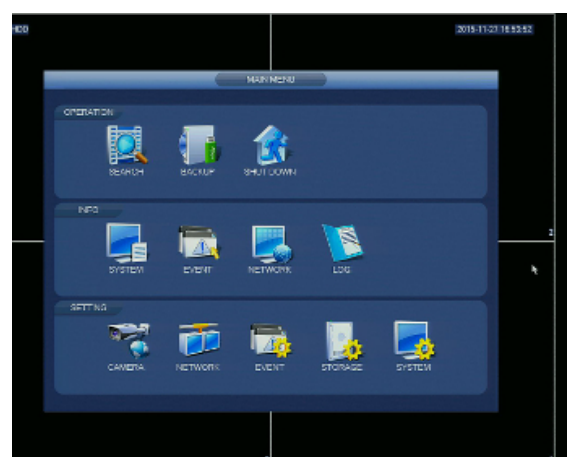
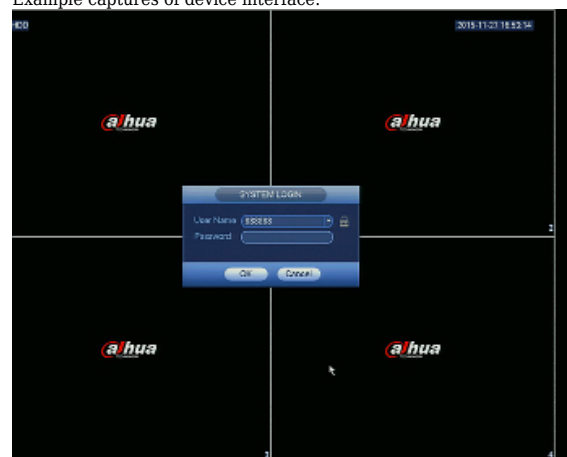
Rear panel:



In the kit:



Example captures of device interface:



Top view:



The Seagate drives marked SkyHawk are designed to work in video surveillance systems. Its design allows for error-free recording of several Full HD streams in 24/7 mode.

Connectors:



OUR OPINIONS



- Audio transmission via network.