

Code: NVR4108-4KS2

## IP DVR **NVR4108-4KS2** 8 CHANNELS DAHUA

Net: **648.00 PLN** Gross: **797.04 PLN**



### SPECIFICATION

|                                     |  |
|-------------------------------------|--|
| Standard:                           | TCP/IP   |
| Supported resolutions:              | max. 8.3 Mpx, 4K UHD - 3840 x 2160 px  |
| Video outputs:                      | 1 pcs HDMI<br>1 pcs VGA  |
| Audio support:                      | 8 Channels - Audio from cameras  |
| Audio inputs:                       | 1 pcs CINCH - External microphone input  |
| Audio outputs:                      | 1 pcs CINCH  |
| Image compression method:           | H.265 / H.264 / MJPEG  |
| Supported hard drives:              | 1 x 6 TB SATA  |
| Recording modes:                    | Manual, Motion Detection, Schedule   |
| Network protocols:                  | HTTP, HTTPS, TCP/IP, IPv4/IPv6, UPnP, RTSP, UDP, SMTP, NTP, DHCP, DNS, DDNS, IP Filter, PPPoE, FTP, IP Search, ONVIF 2.4   |
| External storage devices backup:    | Backup to USB drive (pendrive)   |
| Searching and playback the records: | Records searching: by time and events type. Records playback: forward, backward, fast, slow<br>Advanced searching (to the one second accuracy)<br>All channels synchronous playback, Smart Search function   |
| Bitrate:                            | max. 80 Mb/s   |
| Network functions:                  | Full support via network, Remote records copying, Web Server built-in<br>max. 128 on-line users  |
| ONVIF:                              | 2.4  |
| Mobile phones support:              | Port no.: 37777 or access by a cloud (P2P)<br>• Android: Darmowa aplikacja <a href="#">gDMSS Plus</a><br>• iOS (iPhone): Darmowa aplikacja <a href="#">iDMSS Plus</a><br><br>See how to configure the P2P function in Dahua recorders and how to enable the mobile application |
| Default admin user / password:      | admin / admin  |
| Default IP address:                 | 192.168.1.108  |

DELTA-OPTI Monika Matysiak; <https://www.delta.poznan.pl>  
POL; 60-713 Poznań; Graniczna 10  
e-mail: [delta-opti@delta.poznan.pl](mailto:delta-opti@delta.poznan.pl); tel: +(48) 61 864 69 60

|                                  |   |
|----------------------------------|---|
| Web browser access ports:        | 80, 37777   |
| PC client access ports:          | 37777   |
| Mobile client access ports:      | 37777   |
| RTSP URL:                        | rtsp://admin:haslo@192.168.1.108:554/cam/realmonitor?channel=1&subtype=0 - Main stream<br>rtsp://admin:haslo@192.168.1.108:554/cam/realmonitor?channel=1&subtype=1 - Sub stream |
| Alarm inputs / outputs:          | <input type="checkbox"/>  |
| PTZ control:                     | IP Speed Dome Cameras   |
| Motion Detection:                | 22 x 18 motion zones - after motion detection records detected channels only  |
| USB:                             | 2 pcs USB 2.0   |
| Intelligent Image Analysis:      | <input type="checkbox"/>  |
| Mouse support:                   | <input type="checkbox"/>  |
| IR remote controller in the set: | <input type="checkbox"/>  |
| Power supply:                    | 12 V DC / 2 A (power adapter included)  |
| Weight:                          | 0.46 kg   |
| Dimensions:                      | 205 x 205 x 46 mm   |
| Supported languages:             | English, Polish   |
| Country of origin:               | China   |
| Manufacturer / Brand:            | DAHUA   |
| Guarantee:                       | <b>3 years</b>  |

## PRESENTATION

Top view:



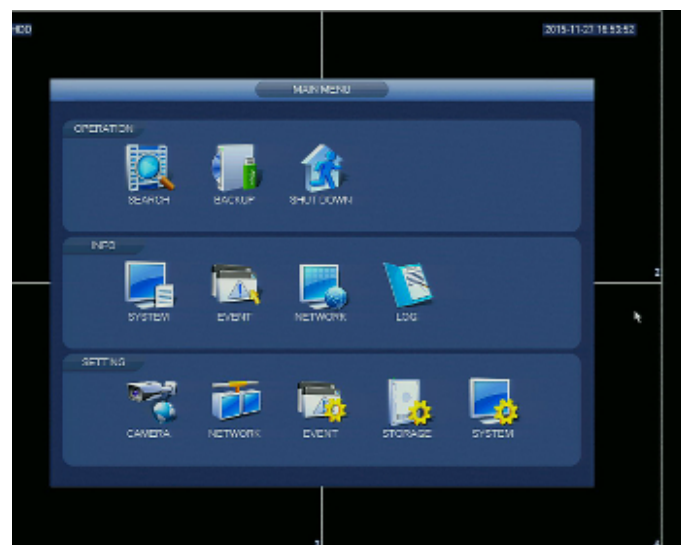
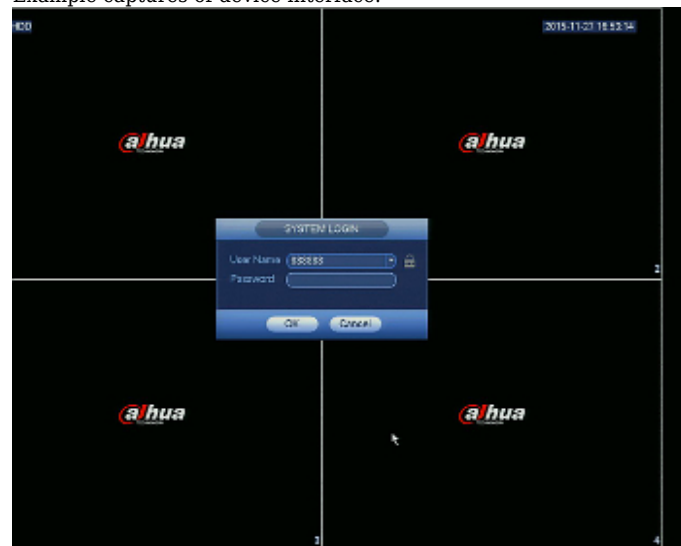
Rear panel:



In the kit:



Example captures of device interface:



## OUR OPINIONS



- Audio transmission via network.

