

Code: NVR608R-128-4KS2

NVR NVR608R-128-4KS2 128 CHANNELS +eSATA DAHUA

Net: 3 230.54 EUR Gross: 3 973.56 EUR



SPECIFICATION

| | |
|-------------------------------------|--|
| Standard: | TCP/IP |
| Supported resolutions: | max. 12 Mpx - 4000 x 3000 px |
| Video outputs: | 2 pcs HDMI 1 pcs VGA |
| Audio support: | 128 Channels - Audio from cameras |
| Audio inputs: | 1 pcs CINCH |
| Audio outputs: | 1 pcs CINCH |
| Image compression method: | H.265 / H.264 / MJPEG |
| Supported hard drives: | 8 x 8 TB SATA + 1 x eSATA Operation modes : SINGLE, Raid 0/1/5/10 |
| Recording modes: | Manual, Sensor, Motion detection, Schedule |
| Network protocols: | HTTP, HTTPS, TCP/IP, IPv4/IPv6, UPnP, RTSP, UDP, SMTP, NTP, DHCP, DNS, IP Filter, PPPoE, DDNS, FTP, Alarm Server, IP Search ONVIF 2.4 |
| External storage devices backup: | Backup to USB drive (pendrive, external drive) |
| Searching and playback the records: | Records searching: by time and events type. Records playback: forward, backward, fast, slow "Frame by Frame" playback function |
| Bitrate: | max. 384 Mbps (total) |
| Power consumption: | ≤ 20 W (without HDD) |
| Network functions: | Full support via network, Remote records copying, Web Server built-in max. 128 on-line users |
| ONVIF: | 2.4 |
| Mobile phones support: | Port no.: 37777 or access by a cloud (P2P) • Android: Free application DMSS • iOS (iPhone): Free application DMSS See how to configure the P2P function in Dahua recorders and how to enable the mobile application |
| Default IP address: | 192.168.1.108 |

DELTA-OPTI Monika Matysiak; <https://www.delta.poznan.pl>
POL; 60-713 Poznań; Graniczna 10
e-mail: delta-opti@delta.poznan.pl; tel: +(48) 61 864 69 60

| | |
|----------------------------------|--|
| Default admin user / password: | admin / admin |
| Web browser access ports: | 80, 37777 |
| PC client access ports: | 37777 |
| Mobile client access ports: | 37777 |
| RTSP URL: | rtsp://admin:haslo@192.168.1.108:554/cam/realmonitor?channel=1&subtype=0 - Main stream rtsp://admin:haslo@192.168.1.108:554/cam/realmonitor?channel=1&subtype=1 - Sub stream |
| Alarm inputs / outputs: | 16 pcs / 8 pcs |
| PTZ control: | RS-485 - Many protocols IP Speed Dome Cameras |
| Motion Detection: | 22 x 18 motion zones |
| Intelligent Image Analysis: | <ul style="list-style-type: none"> intrusion, crossing the line (tripwire), abandoned/missing object, people counting, heat map Heat map - the selection in the image by corresponding colors the areas with different traffic |
| USB: | 2 pcs USB 3.0 2 pcs USB 2.0 |
| Mouse support: | ✓ |
| IR remote controller in the set: | — |
| Main features: | <ul style="list-style-type: none"> Ability to work drives in a RAID array can significantly improve system reliability Redundant power supply - The recorder has been equipped with two separate power supply adapters |
| Power supply: | 100 V ... 240 V AC |
| Weight: | 8.9 kg (without HDD) |
| Dimensions: | 444 x 475 x 95 mm |
| Supported languages: | Polish, English |
| Country of origin: | China |
| Manufacturer / Brand: | DAHUA |
| Guarantee: | 3 years |

PRESENTATION


View after open the front cover:



Front panel:



Rear panel:



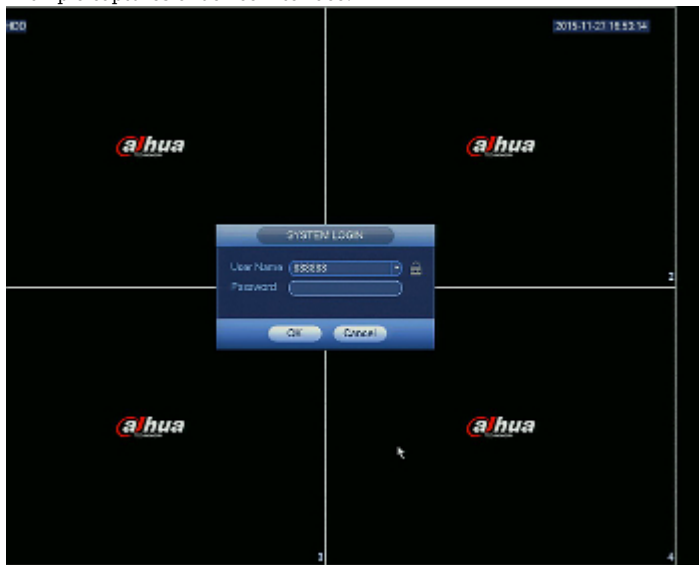
DELTA-OPTI Monika Matysiak; <https://www.delta.poznan.pl>
POL; 60-713 Poznań; Graniczna 10
e-mail: delta-opti@delta.poznan.pl; tel: +(48) 61 864 69 60

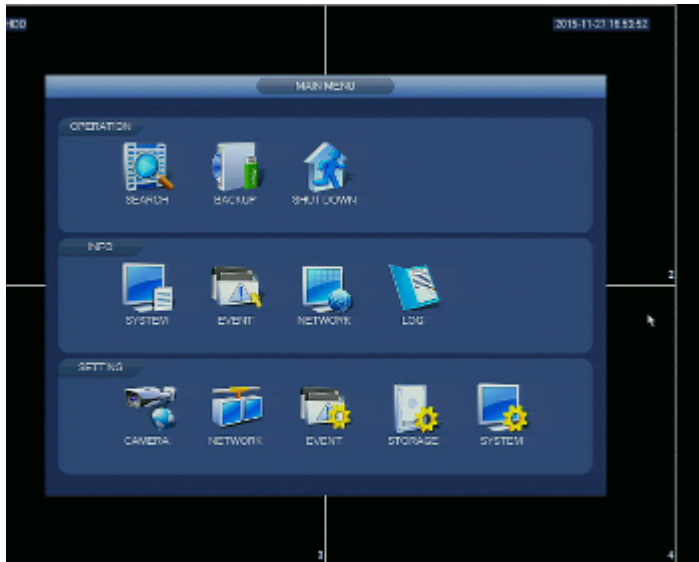


In the kit:



Example captures of device interface:





OUR OPINIONS



- Audio transmission via network.
- The NVR608R-128-4KS2 is equipped with USB 3.0 port allowing to fast records backup.

PACKAGE

| | |
|----------------------------------|--------------------|
| Dimensions (L x W x H): 0x0x0 mm | Gross Weight: 0 kg |
|----------------------------------|--------------------|