

Code: NVR5432-16P-4KS2E

IP DVR NVR5432-16P-4KS2E 32 CHANNELS, 16 PoE DAHUANet: **1 282.48 EUR** Gross: **1 577.45 EUR****SPECIFICATION**

| | |
|-------------------------------------|----------------------------------------------------------------------------------------------------------------------------------------------------------------------------------------------------------------------------------------------------------------------------------------------------------------|
| Standard: | TCP/IP |
| Supported resolutions: | max. 12 Mpx - 4000 x 3000 px |
| Video outputs: | 2 pcs HDMI 2 pcs VGA |
| Audio support: | 32 Channels - Audio from cameras |
| Audio inputs: | 1 pcs CINCH |
| Audio outputs: | 2 pcs CINCH |
| Image compression method: | H.265 / H.265+ / H.264 / H.264+ / MJPEG |
| USB: | 1 pcs USB 2.0 2 pcs USB 3.0 |
| Supported hard drives: | 4 x 10 TB SATA III + 1 eSATA |
| Recording modes: | Manual, Sensor, Motion detection, Schedule |
| Network protocols: | HTTP, HTTPS, TCP/IP, IPv4/IPv6, UPnP, SNMP, RTSP, UDP, SMTP, NTP, DHCP, DNS, DDNS, PPPoE, IP Filter, FTP, IP Search, Alarm Server, ONVIF 2.4 |
| Switch PoE: | <ul style="list-style-type: none"> • 16-port PoE Switch built-in, 25.5 W / Channel, PoE (802.3af/at), max. 150 W (total) • ePoE - 800 m : 1 ... 8 ports |
| External storage devices backup: | Backup to USB drive (pendrive, external drive) |
| Searching and playback the records: | Records searching: by time and events type. Records playback: forward, backward, fast, slow Advanced searching (to the one second accuracy) All channels synchronous playback, Smart Search function |
| Bitrate: | max. 320 Mbps |
| Network functions: | Full support via network, Remote records copying, Web Server built-in max. 128 on-line users |
| Mobile phones support: | Port no.: 37777 or access by a cloud (P2P) <ul style="list-style-type: none"> • Android: Free application DMSS • iOS (iPhone): Free application DMSS See how to configure the P2P function in Dahua recorders and how to enable the mobile application |
| Default IP address: | 192.168.1.108 |

DELTA-OPTI Monika Matysiak; <https://www.delta.poznan.pl>
 POL; 60-713 Poznań; Graniczna 10
 e-mail: delta-opti@delta.poznan.pl; tel: +(48) 61 864 69 60

| | |
|----------------------------------|---------------------------------------------------------------------------------------------------------------------------------------------------------------------------------|
| Default admin user / password: | admin / - The administrator password should be set at the first start |
| Web browser access ports: | 80, 37777 |
| PC client access ports: | 37777 |
| Mobile client access ports: | 37777 |
| RTSP URL: | rtsp://admin:haslo@192.168.1.108:554/cam/realmonitor?channel=1&subtype=0 - Main stream rtsp://admin:haslo@192.168.1.108:554/cam/realmonitor?channel=1&subtype=1 - Sub stream |
| Alarm inputs / outputs: | 16 / 6 |
| PTZ control: | IP Speed Dome Cameras |
| Motion Detection: | 22 x 18 motion zones - after motion detection records detected channels only |
| Intelligent Image Analysis: | ✓ |
| Mouse support: | ✓ |
| IR remote controller in the set: | — |
| Power supply: | 100 ... 240 V AC @ 50 / 60 Hz |
| Weight: | 4.65 kg |
| Dimensions: | 440 x 411 x 76 mm |
| Supported languages: | Polish, English, Bulgarian, Czech, Danish, Finnish, French, Greek, Spanish, Dutch, German, Portuguese, Russian, Romanian, Serbian, Slovak, Slovenian, Hungarian, Italian |
| Country of origin: | China |
| Manufacturer / Brand: | DAHUA |
| Guarantee: | 3 years |

PRESENTATION

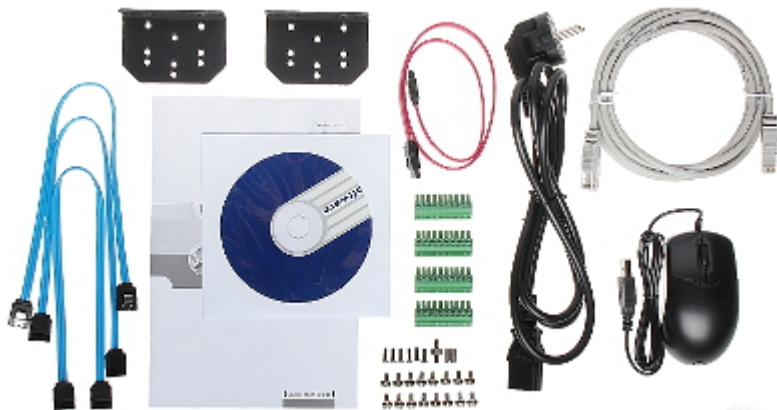
Top view:



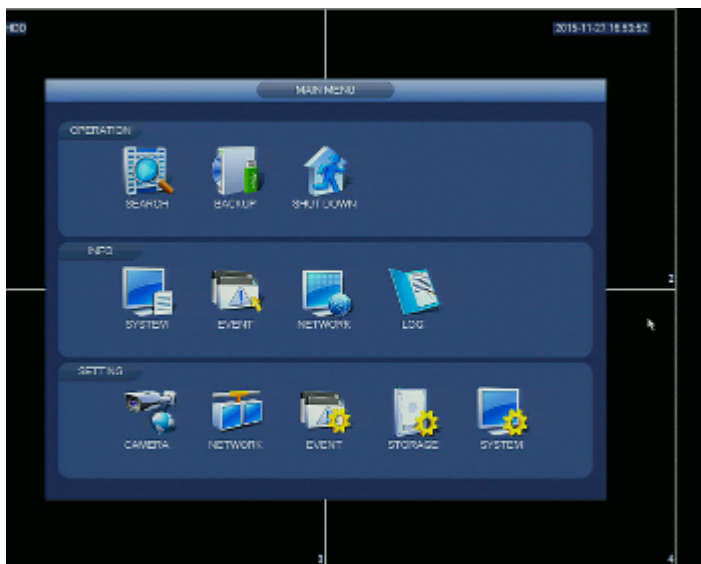
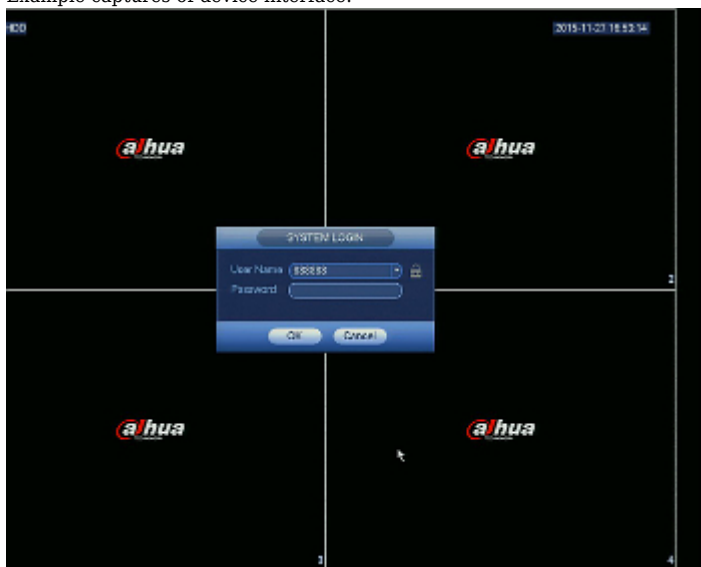
Rear panel:



In the kit:



Example captures of device interface:



OUR OPINIONS



- o Audio transmission via network.