

Code: NVR5864-I

NVR **NVR5864-I** 64 CHANNELS +eSATA DAHUA

Net: **2 600.74 EUR** Gross: **2 600.74 EUR**

NVR equipped with advanced functions of intelligent image analysis.



SPECIFICATION

Standard:	TCP/IP
Supported resolutions:	max. 16 Mpx
Video outputs:	1 pcs HDMI 1 pcs HDMI 4K 1 pcs VGA
Audio support:	64 Channels - Audio from cameras
Audio inputs:	1 pcs CINCH
Audio outputs:	1 pcs CINCH
Image compression method:	H.265+ / H.265 / H.264+ / H.264 / MJPEG
USB:	2 pcs USB 2.0 2 pcs USB 3.0
Supported hard drives:	8 x 8 TB SATA III + 1 x eSATA
Recording modes:	Manual, Sensor, Motion detection, Schedule
Network protocols:	HTTP, HTTPS, TCP/IP, IPv4/IPv6, UPnP, SNMP, RTSP, UDP, SMTP, NTP, DHCP, DNS, IP Filter, PPPoE, DDNS, FTP, Alarm Server, IP Search, P2P, ONVIF 2.4
External storage devices backup:	Backup to USB drive (pendrive, external drive)
Searching and playback the records:	Records searching: by time and events type. Records playback: forward, backward, fast, slow Advanced searching (to the one second accuracy) 1/4/9/16 channel synchronous playback
Bitrate:	max. 320 Mbps
Network functions:	Full support via network, Remote records copying, Web Server built-in max. 128 on-line users
Mobile phones support:	Port no.: 37777 or access by a cloud (P2P) • Android: Free application DMSS • iOS (iPhone): Free application DMSS See how to configure the P2P function in Dahua recorders and how to enable the mobile application
Default IP address:	192.168.1.108
Default admin user / password:	admin / - The administrator password should be set at the first start

DELTA-OPTI Monika Matysiak; <https://www.delta.poznan.pl>
POL; 60-713 Poznań; Graniczna 10
e-mail: delta-opti@delta.poznan.pl; tel: +(48) 61 864 69 60

Web browser access ports:	80, 37777
PC client access ports:	37777
Mobile client access ports:	37777
RTSP URL:	rtsp://admin:haslo@192.168.1.108:554/cam/realmonitor?channel=1&subtype=0 - Main stream rtsp://admin:haslo@192.168.1.108:554/cam/realmonitor?channel=1&subtype=1 - Sub stream
Alarm inputs / outputs:	16 / 6
PTZ control:	RS-485, PELCO-D/P IP Speed Dome Cameras
RS-232 interface:	✓
Motion Detection:	22 x 18 motion zones
Intelligent Image Analysis:	✓
Mouse support:	✓
IR remote controller in the set:	—
Main features:	<ul style="list-style-type: none"> • Advanced peripheral protection functions: intrusion, crossing line with separate rules for vehicles and pedestrians, • Support for devices with the ANPR vehicle identification functions and face recognition, • Identification of the type of the observed object (human, vehicle), • Face recognition and analysis in real time (max. 24 photos per second) : <ul style="list-style-type: none"> - Comparison of faces with images from the database - Face analysis: determination of sex, age and characteristic elements of appearance (glasses, facial hair, mask) - Real-time search of people on the basis of given side information in the range corresponding to features recognized by artificial intelligence of the device - Face bases can be used globally or locally for one video channel - depending on the need - In the base other than face photography, can also be stored such information as: name, sex, date of birth, nationality, address, ID number • Recognition of people based on the characteristic elements of the outfit (type of clothes, clothes color, accessories) • Recognition of cars based on color, body type, license plate color and brand • Recognition of other vehicles not being cars • Intelligent object search based on a photo - the recorder allows to upload a picture of a person or vehicle to search for it on a camera recording • POS - support the machines installed in the points of sales and displaying the date from them as overlaid text on selected channel window • SMD PLUS - searching for an object classified as: human, motor vehicle, non-motor vehicle
Power supply:	100 ... 240 V AC @ 50 / 60 Hz
Weight:	6.7 kg
Dimensions:	440 x 451 x 95 mm - RACK 19", 2U
Supported languages:	Polish, English, Bulgarian, Czech, Danish, Finnish, French, Greek, Spanish, Dutch, German, Portuguese, Russian, Romanian, Slovenian, Serbian, Swedish, Hungarian, Italian
Manufacturer / Brand:	DAHUA
Guarantee:	3 years

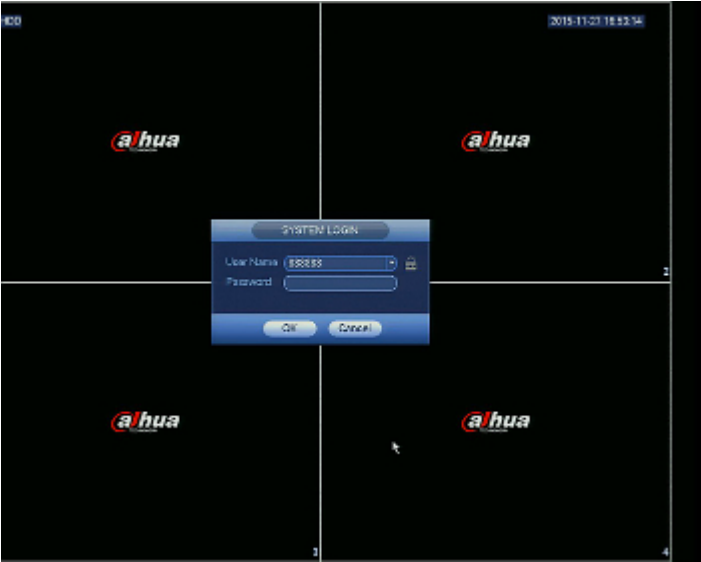
PRESENTATION

Front panel:



DELTA-OPTI Monika Matysiak; <https://www.delta.poznan.pl>
POL; 60-713 Poznań; Graniczna 10
e-mail: delta-opti@delta.poznan.pl; tel: +(48) 61 864 69 60

Example captures of device interface:



OUR OPINIONS



- Audio transmission via network.

PACKAGE

Dimensions (L x W x H): 0x0x0 mm	Gross Weight: 0 kg
----------------------------------	--------------------



DELTA-OPTI Monika Matysiak; <https://www.delta.poznan.pl>
POL; 60-713 Poznań; Graniczna 10
e-mail: delta-opti@delta.poznan.pl; tel: +(48) 61 864 69 60