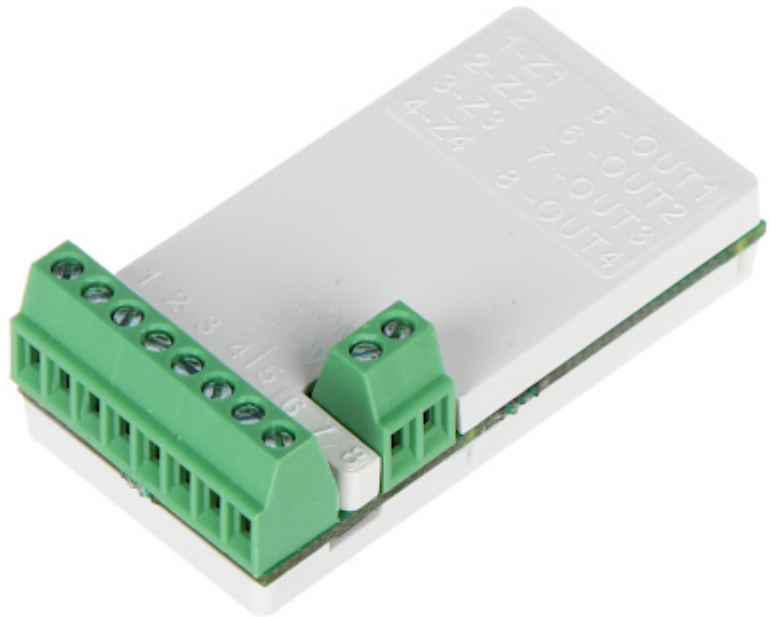


Code: ACX-210

MINIATURE WIRELESS EXPANDER **ACX-210** ABAX/ABAX2 SATEL

Net: **30.11 EUR** Gross: **37.04 EUR**

The module allows to connect wireless devices to the wireless ABAX/ABAX2 system. The device has very small dimensions.



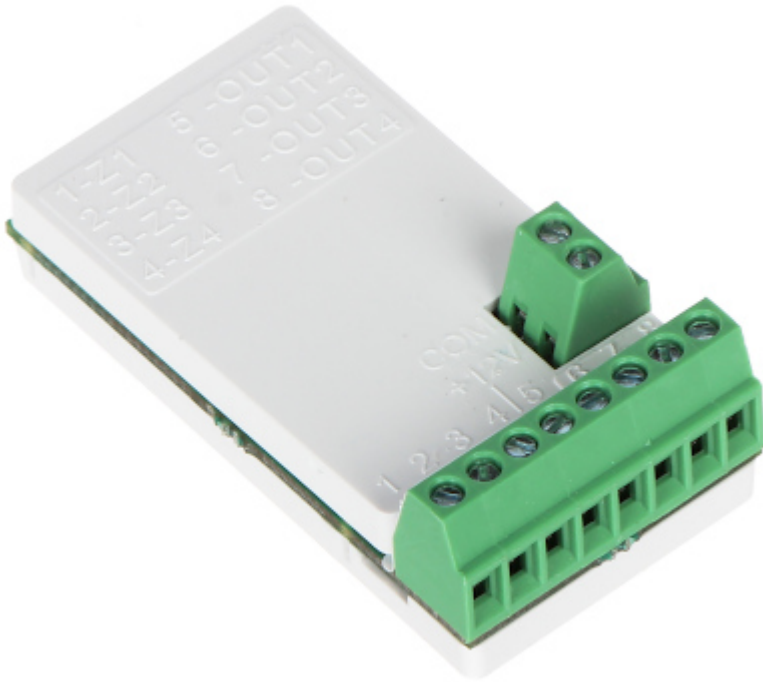
SPECIFICATION

Inputs:	4 pcs NO, NC, EOL, 2EOL/NO, 2EOL/NC
Outputs:	4 pcs OC
Frequency band:	868 ... 868.6 MHz
Radio communication range (at open area):	<ul style="list-style-type: none">• ≤ 2000 m - ABAX2 @ ACU-220,• ≤ 1400 m - ABAX2 @ ACU-280,• ≤ 500 m - ABAX
Tamper output:	—
Load capacity of OC type programmable outputs:	50 mA / 12 V DC
Main features:	<ul style="list-style-type: none">• Remote configuration• Remote update of module software
Power supply:	4 ... 24 V DC
Current consumption:	max. 35 mA
Operation temp:	-10 °C ... 55 °C
Weight:	0.008 kg
Dimensions:	41 x 21 x 13 mm
Manufacturer / Brand:	SATEL
Guarantee:	2 years

PRESENTATION

Internal view of the housing:

DELTA-OPTI Monika Matysiak; <https://www.delta.poznan.pl>
POL; 60-713 Poznań; Graniczna 10
e-mail: delta-opti@delta.poznan.pl; tel: +(48) 61 864 69 60



Connectors:



In the kit:

